

**HO SCRATCH BUILT TURNOUT  
BEER TRACK  
FREEPORT, TEXAS**

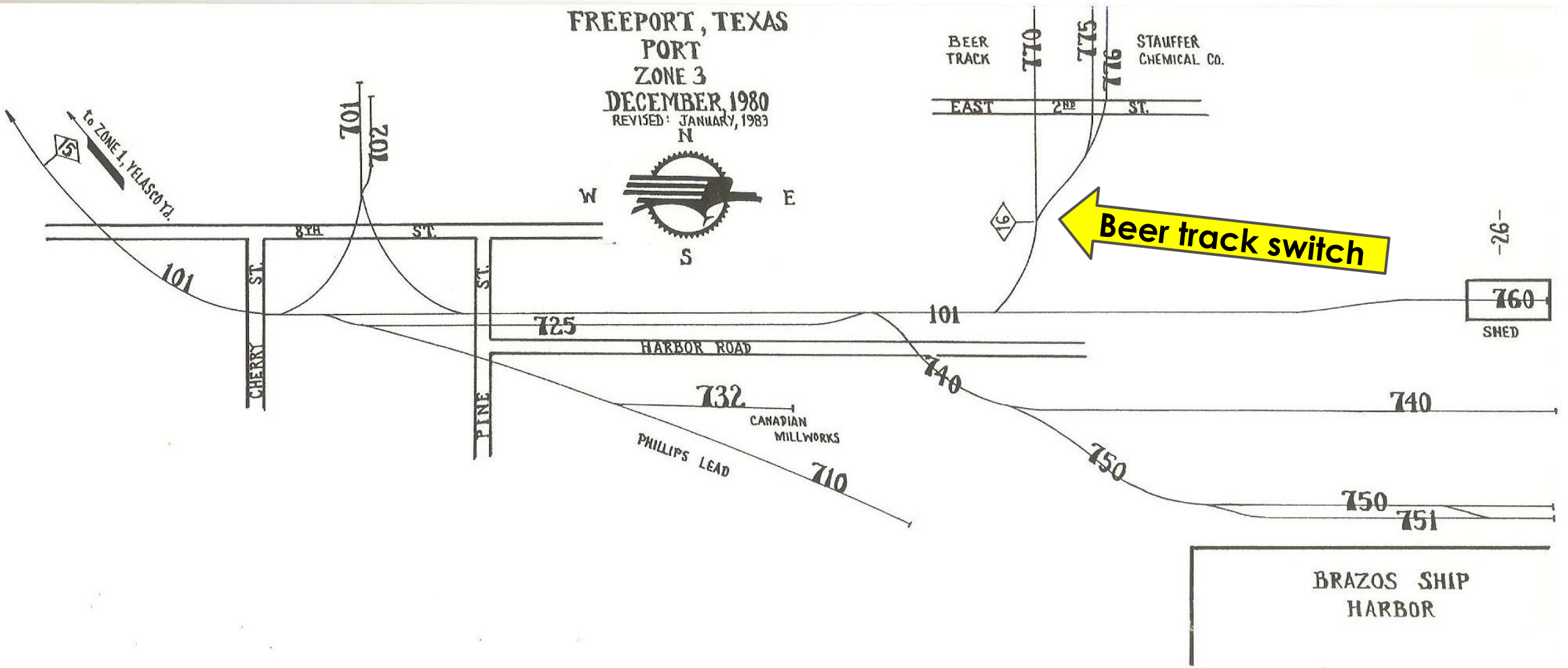
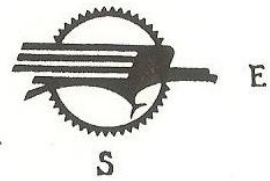
**BY JIM WILLIAMS**

# THE MODELLING PROCESS

- 1. THE PROTOTYPE**
2. SCALE DRAWINGS
3. CONSTRUCTION
4. INSTALLATION
5. WEATHERING & FINAL DETAILS

# MOPAC track map of Freeport Texas, 1980.

FREEPORT, TEXAS  
PORT  
ZONE 3  
DECEMBER, 1980  
REVISED: JANUARY, 1983



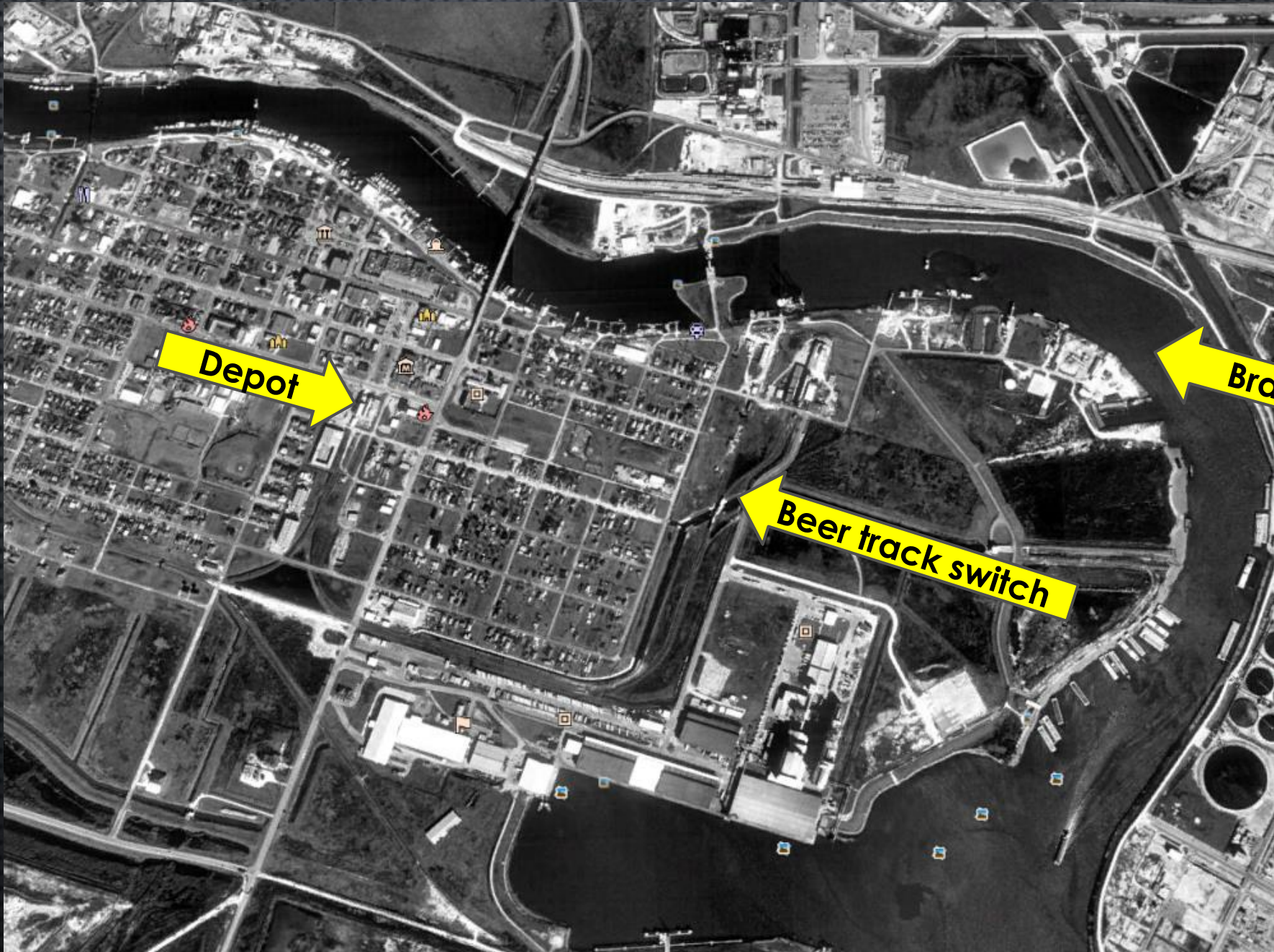
Freeport,  
Texas

Photo from  
Dan Kesner



Freeport,  
Texas 1995 by  
Google Earth

The fuel dealer  
has been  
removed by  
the time this  
photo was  
taken.



Nearby in Velasco is a similar track switch, circa 1962.

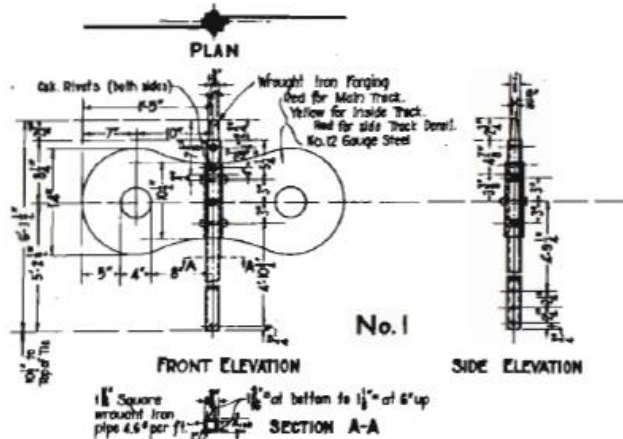
Will use this switch for prototype model.



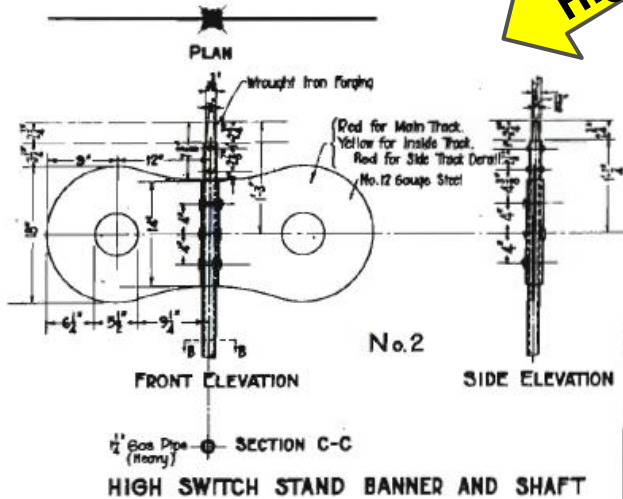
GP7 former  
STLB&M 4118  
renumbered  
MP 133

Note the  
switch stand  
target.

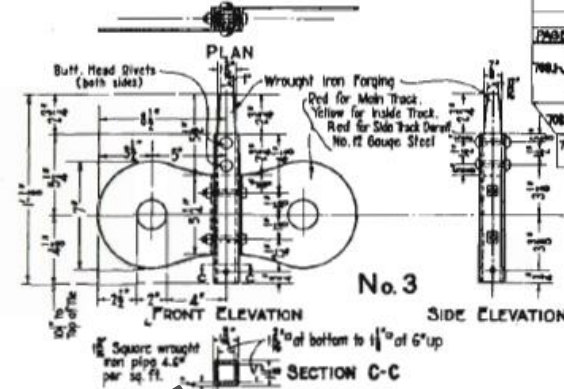
Mopac standard for the high switch stand banner



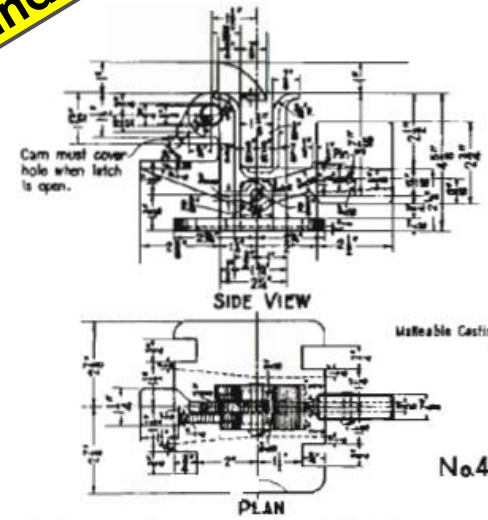
INTERMEDIATE SWITCH STAND BANNER AND SHAFT



HIGH SWITCH STAND BANNER AND SHAFT



SWITCH STAND BANNER AND SHAFT



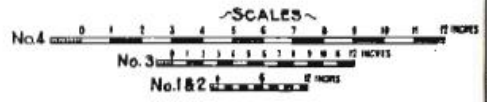
SWITCH STAND LATCH

REVISION RECORD 708.1-L					
PAGE	DESCRIPTION	DATE	SUPERSEDES PAGE	APPROVED	
708.1-J	Redrawn to show single banners, increased latch and to raise intermediate banner to seven feet. Adjusted for No. 12 Lines.	4-21-28	708.1-H	E 258	By Signal Bureau
708.1-K	Note g added	5-27-30	708.1-J	H-1165	App
708.1-L	Purpose changed to read on Derail banner, no change in spec rules.	3-27-31	708.1-K	H-1168	TSAB

High switch stand

- Notes:
- a- All bolts and rivets in switch-stand banners and shafts to be 3/8" diameter.
  - b- Holes shown in shafts to be for 3/4" bolts.
  - c- If square tubing cannot be procured use heavy gas pipe squared at the ends.
  - d- For details of shaft of high stand see Page 708.2
  - e- Vertical shaft or pipe of banner to be closed so as to fit vertical shaft of switch stand with a driving fit.
  - f- Lamp top fitting to be both welded and riveted to the vertical pipe or shaft.

Notes cont'd.  
 g- Where used with 3'-4" connecting rod low banner will be used on switch stand only where no light is required. Where light is required replace banner and shaft with lamp having enameled discs for day indication.



APPROVED: *[Signature]*  
 CHIEF ENGINEER MISSOURI PACIFIC R.R. CO.  
*[Signature]*  
 CHAIRMAN COMMITTEE ON RAILROAD EQUIPMENT STANDARDS

MISSOURI PACIFIC LINES  
 STANDARD SWITCH BANNERS AND LATCH  
 SCALES AS NOTED APR 21, 1928  
 OFFICE OF CHIEF ENGINEER MISSOURI PACIFIC R.R. CO.  
 ST. LOUIS, MO.  
 PAGE 708.1-L FILE NO. H-1165

# THE MODELLING PROCESS

1. THE PROTOTYPE

**2. SCALE DRAWINGS**

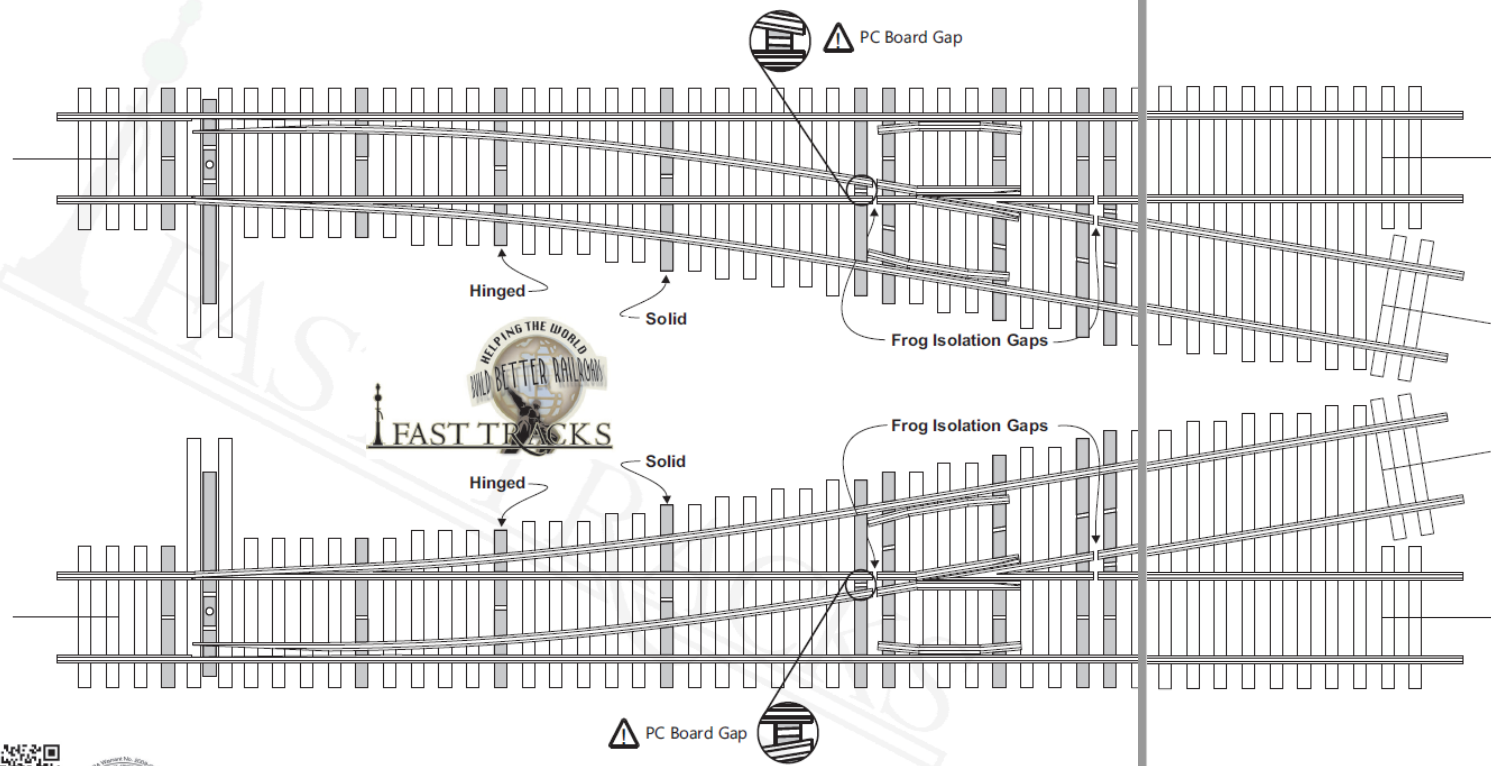
3. CONSTRUCTION

4. INSTALLATION

5. WEATHERING & FINAL DETAILS

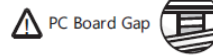


HO Scale, #6 Turnout P/N: AF-HO-T-6-ME<sub>xx</sub>



[www.handlaidtrack.com](http://www.handlaidtrack.com)

All content copyright © 2012 Fast Tracks, All rights reserved.



Will use Fast  
Tracks template  
for #6 turnout

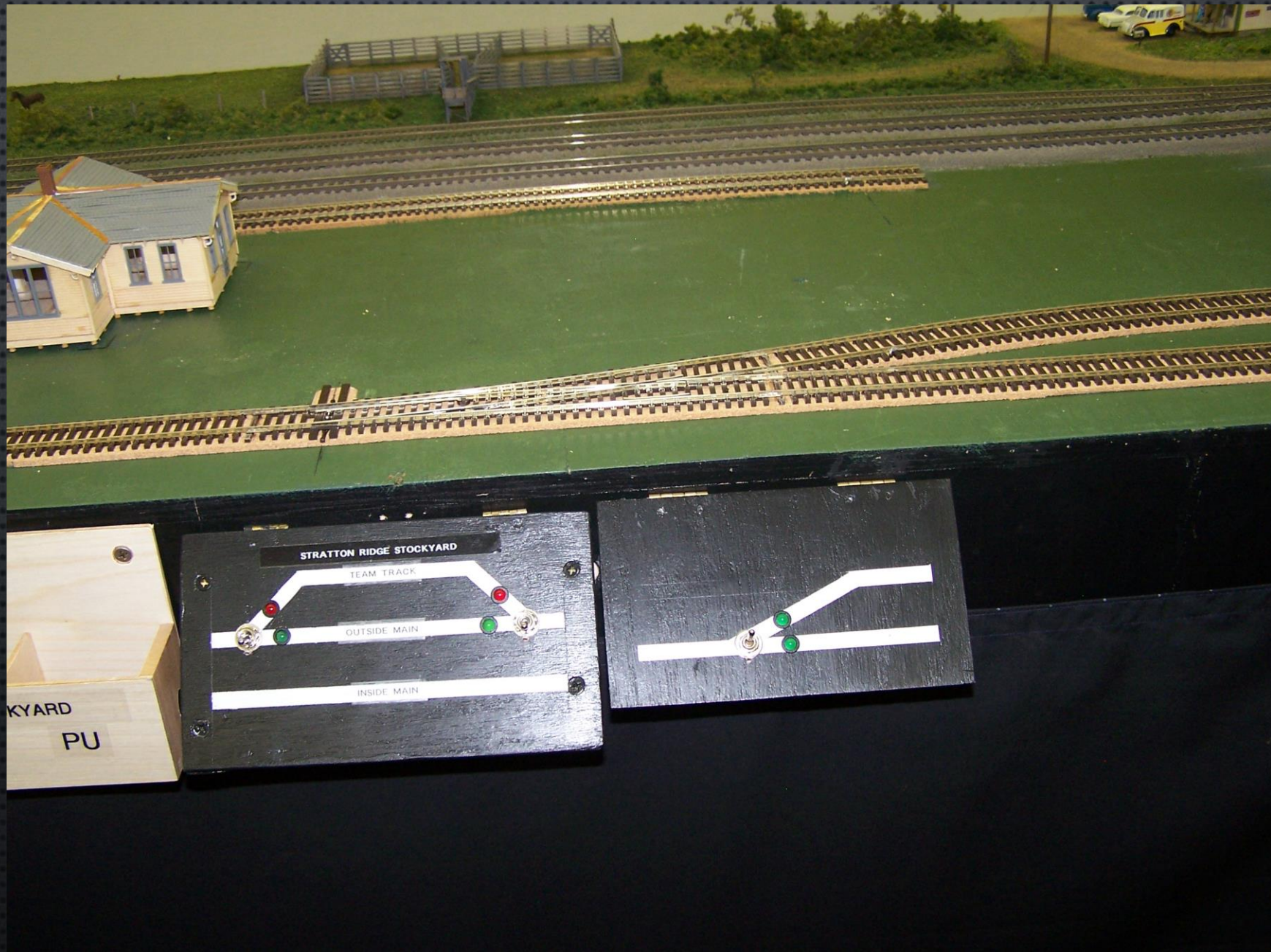
# THE MODELLING PROCESS

1. THE PROTOTYPE
2. SCALE DRAWINGS
- 3. CONSTRUCTION**
4. INSTALLATION
5. WEATHERING & FINAL DETAILS

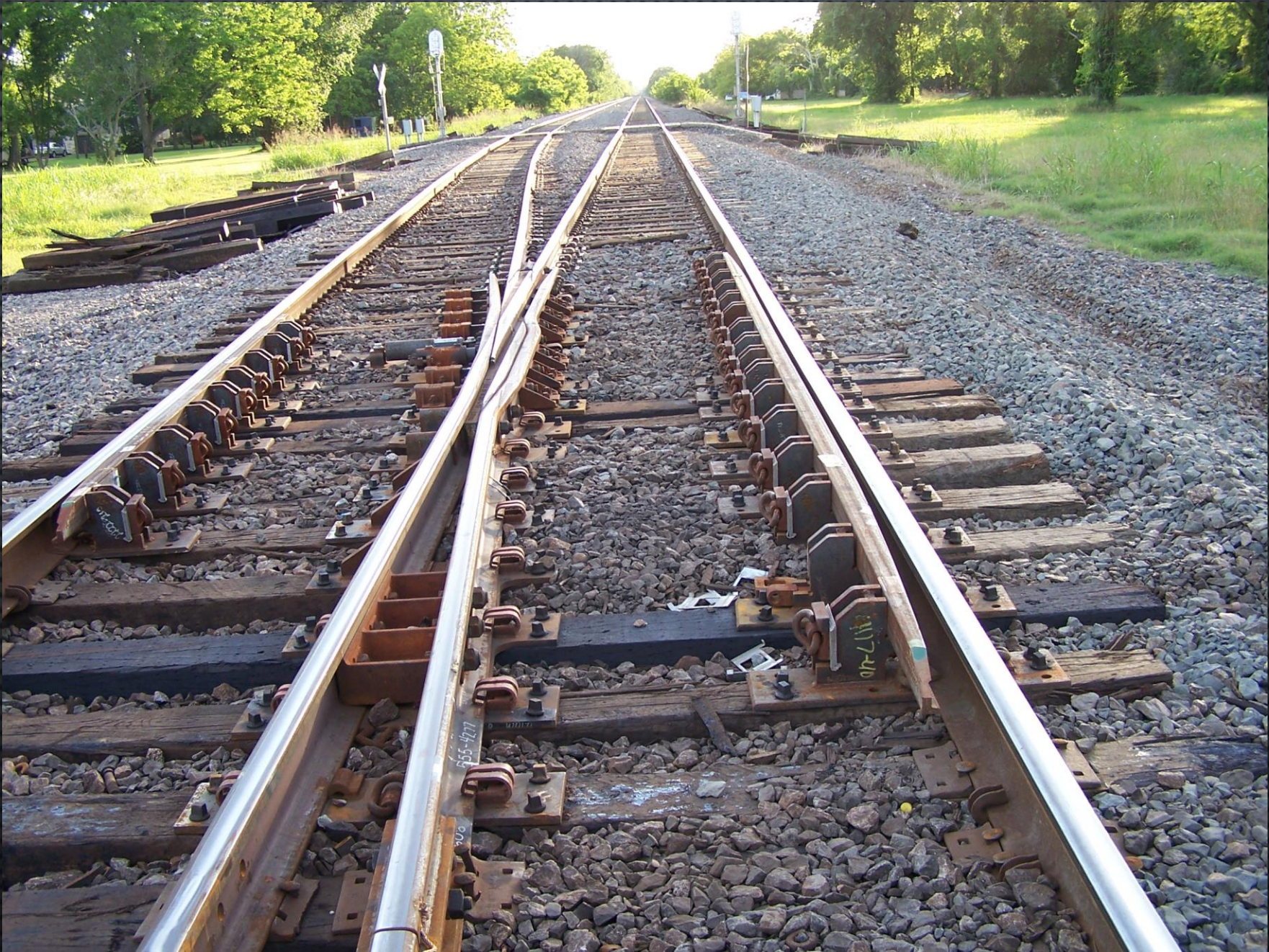
Earliest photo  
of location for  
the switch  
shows 1/8"  
road bed  
being  
installed.



Originally a  
Peco #6 code  
83 insulfrog  
switch was  
installed.

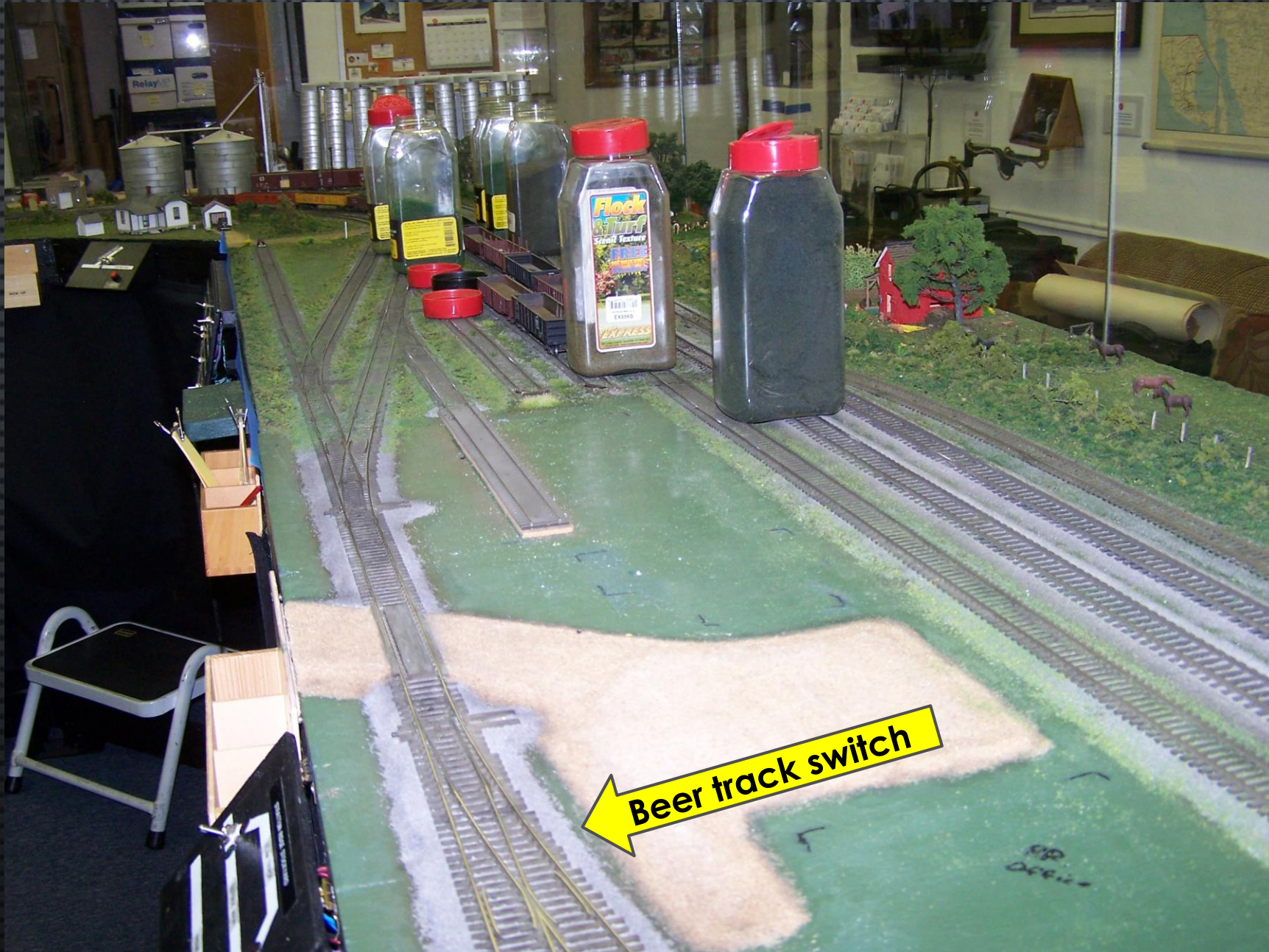


Meanwhile  
outside  
nearby in the  
real world  
UPRR is  
installing a  
new spring  
frog switch...



Ballast has been added, then a change in plans occurred...

Lets replace the Peco #6 switch with a scratch built switch.



# THE MODELLING PROCESS

1. THE PROTOTYPE
2. SCALE DRAWINGS
3. CONSTRUCTION
- 4. INSTALLATION**
5. WEATHERING & FINAL DETAILS

The Peco switch has been removed and replaced with a scratch built #6 switch.

It's code 83 rails with wood and PC board ties.

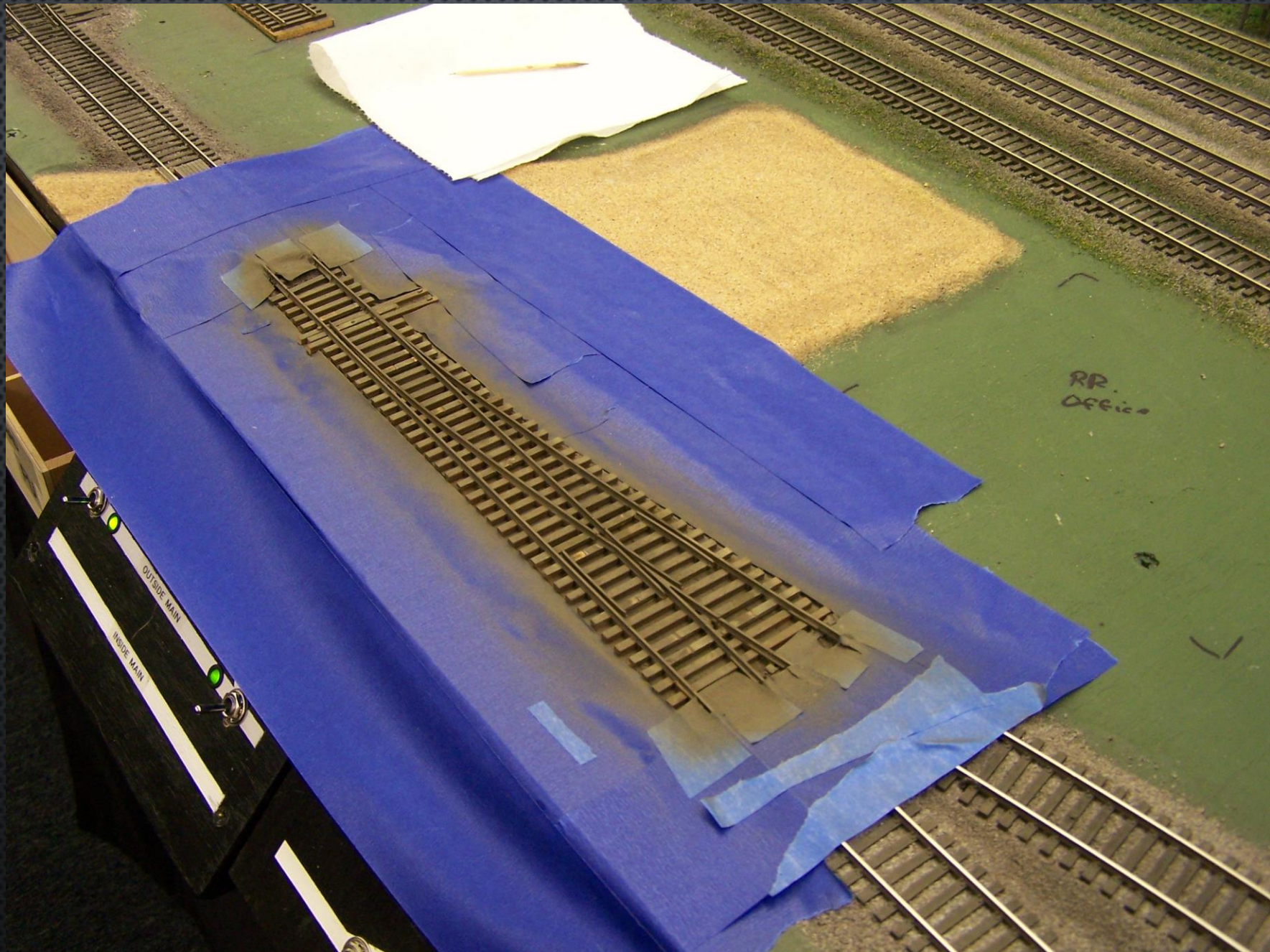




# THE MODELLING PROCESS

1. THE PROTOTYPE
2. SCALE DRAWINGS
3. CONSTRUCTION
4. INSTALLATION
- 5. WEATHERING & FINAL DETAILS**

After wires have been connected and rail joints soldered add a coat of rail tie brown paint (acrylic).

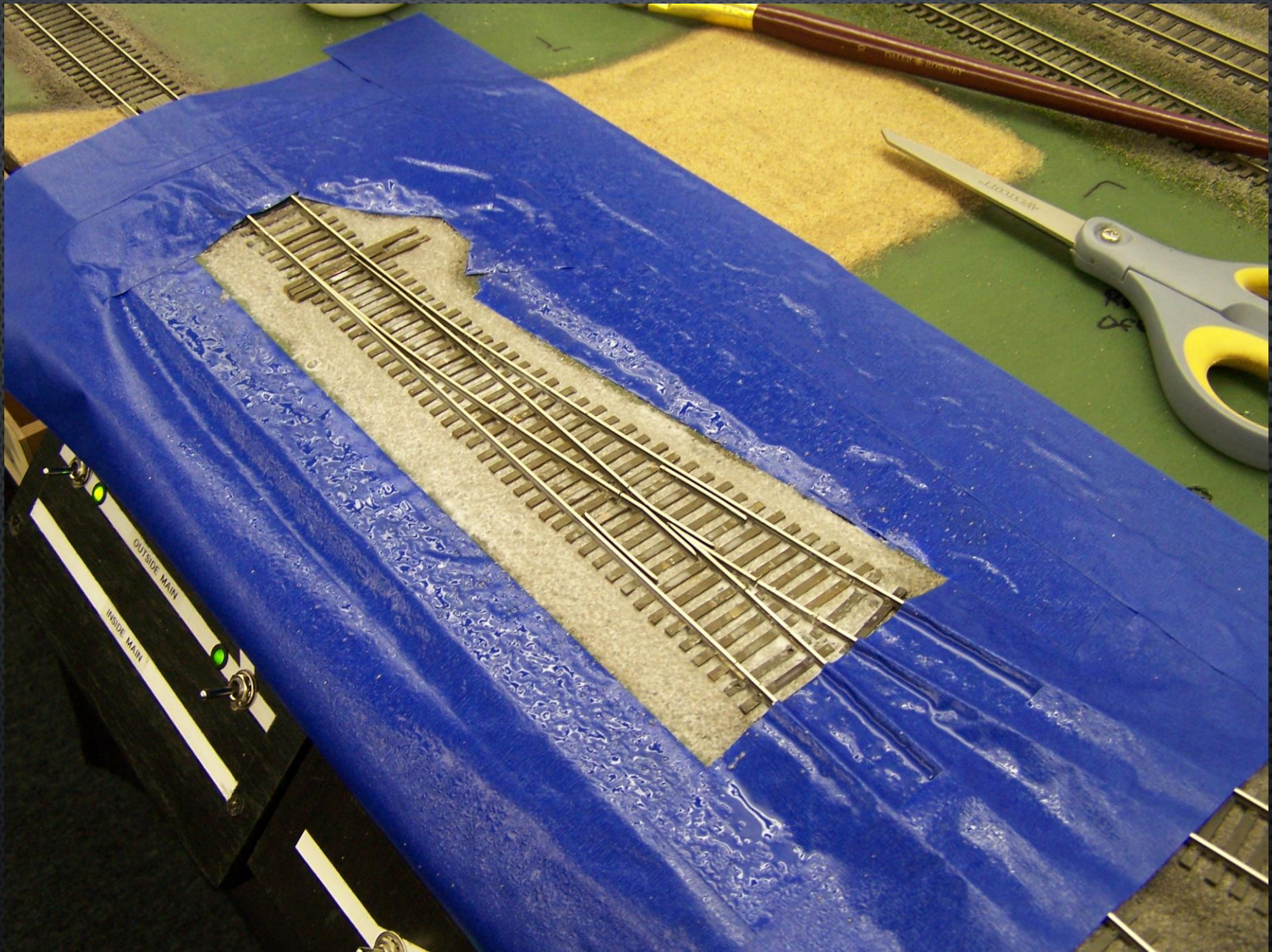


Add ballast.

Used medium size grey ballast as filler then a top coat of fine grey blend ballast.



**Add 50/50  
water and  
white glue  
mix to  
secure  
ballast to  
road bed.**



Stain ballast to match adjacent road bed.

Use alcohol and black India ink mix for stain.



Add details to the track, i.e. switch stand, rail braces, rail joiners and point gauge bars.

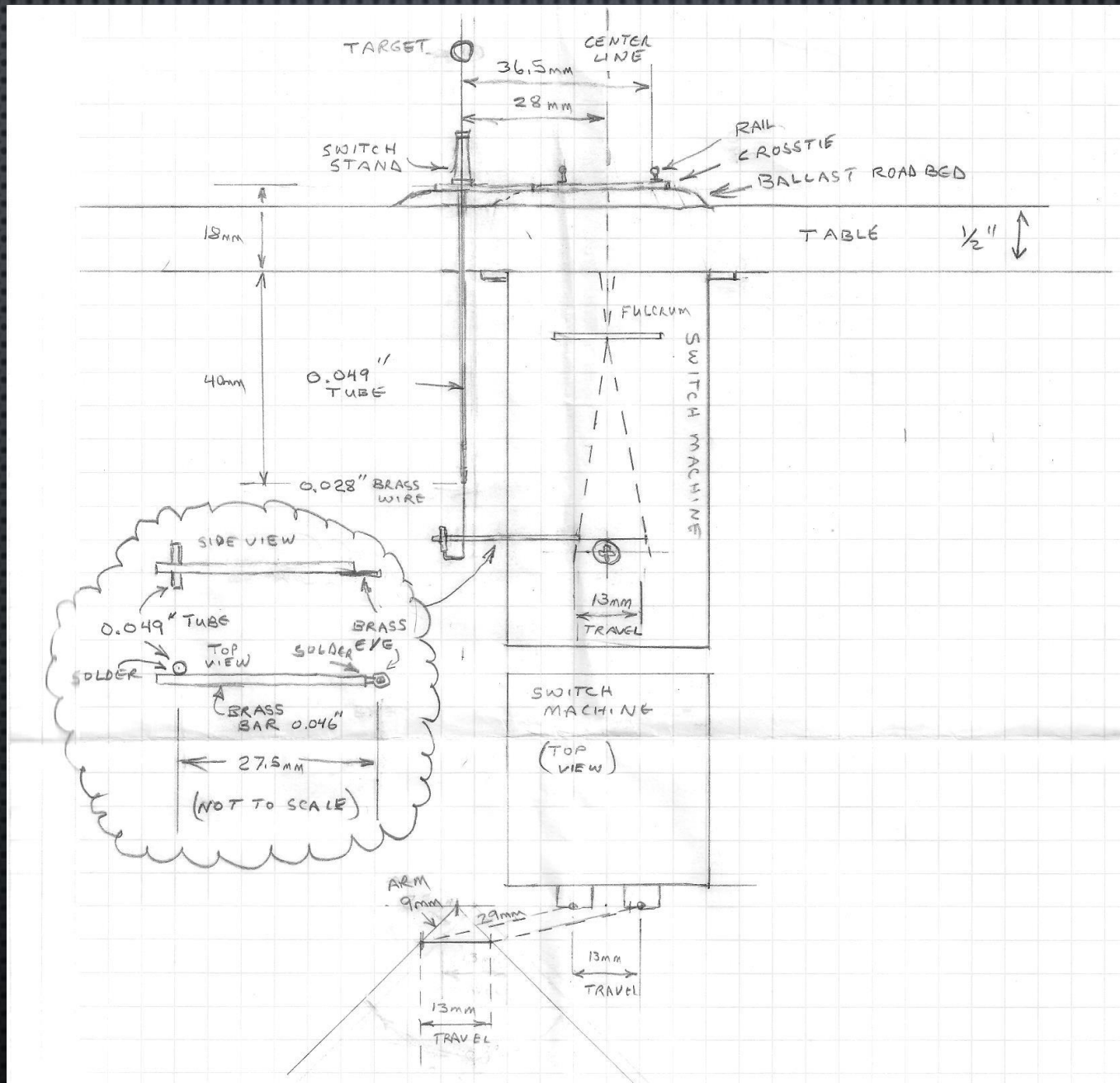
The switch stand rotates in sync with the points.



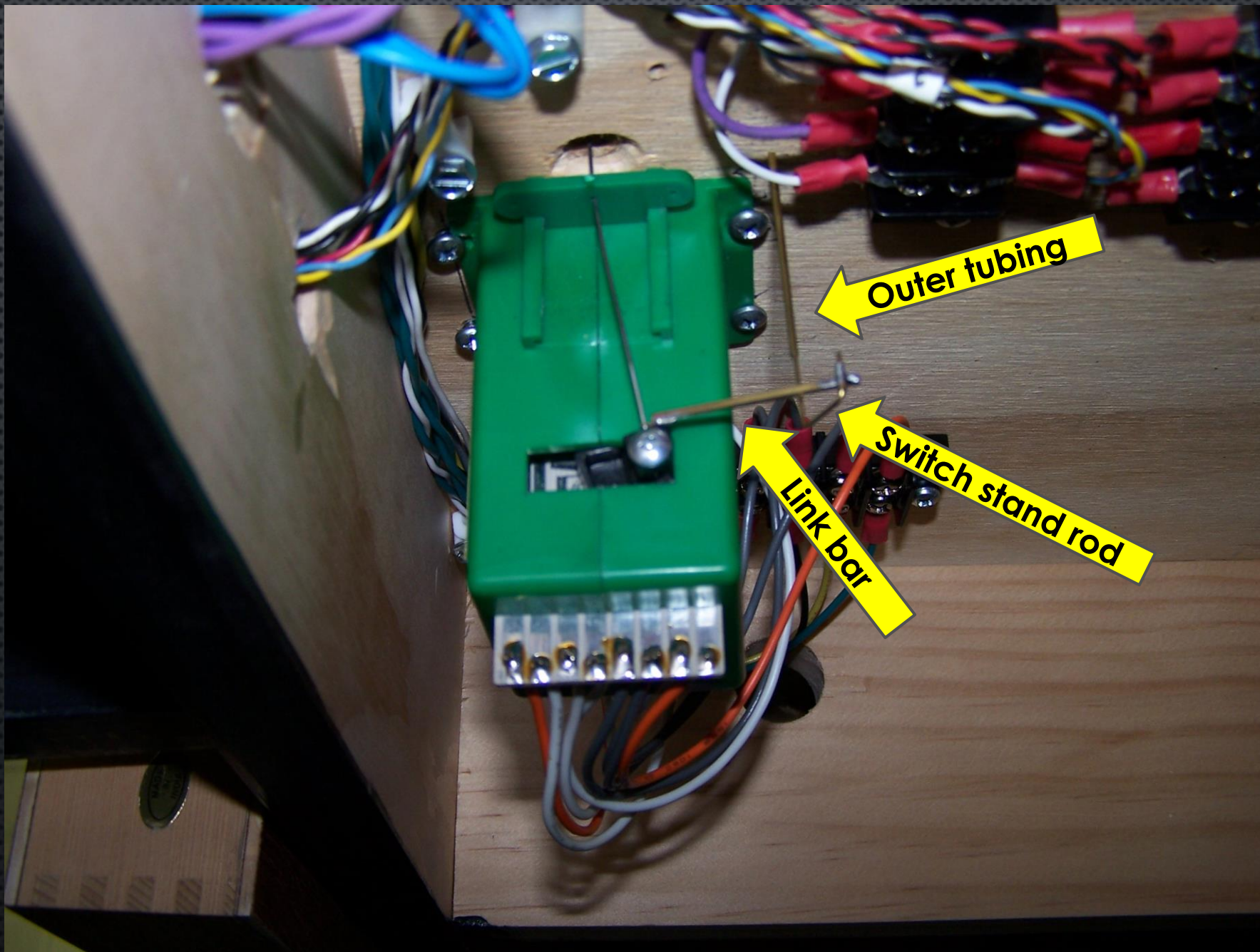
Central Valley switch detail parts #1603

Round-House marker lamp #2956

Lets rotate the switch stand target by linking it to the back and forth movement of the switch machine.

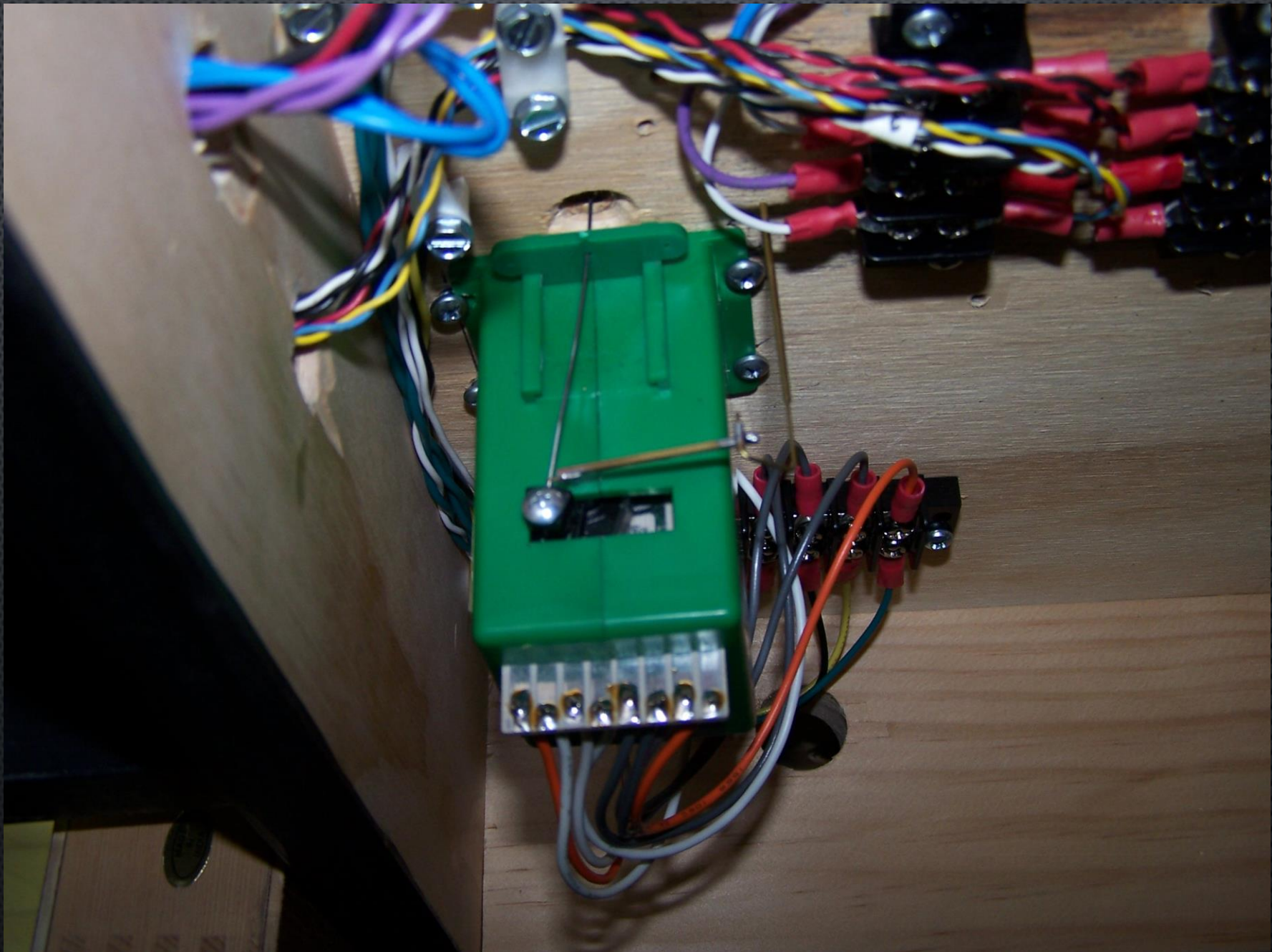


Switch machine for the beer track switch with switch stand linkage.





Switch machine for the beer track switch with switch stand linkage.



... and the  
beer  
warehouse.



**THE END**