



# **Building an HO scale model of the second depot at Brazoria by Jim Williams**

**The depot building was constructed in 1905 by the St. L B & M RR. After passenger operations ceased the building was moved off of RR property and split into two pieces. The freight room piece exists today just South of the original building's location.**

# **The modeling process:**

- Gather documentation
- Determine dimensions
- Create HO scale drawings
- Build the model
- Prepare the train layout
- Install the model on layout

# The 1st Brazoria Depot South side view



BCHM collection photo

# The 1st Brazoria Depot – 1910

## North side view, from Market St.



Jim Williams collection photo

**Early in its life the Brazoria Depot was lengthened 15' (from 86' to 101'), the roof was modified to the hip style, restrooms added, the bay window style was changed, and most of the elevated wooden passenger walk-way was removed.**

# The 2<sup>nd</sup> Brazoria Depot – early East end view



DORIS SETZER collection photo

**The 2<sup>nd</sup> Brazoria Depot – early  
North side view. Note the cistern  
barrel at left**



# The 2<sup>nd</sup> Brazoria Depot – early West end view from Hwy 36



DORIS SETZER collection photo



# The 2<sup>nd</sup> Brazoria Depot ca 1940's – West end view



BCHM collection photo

# The 2<sup>nd</sup> Brazoria Depot – late South Side view



Facts photo

# The 2<sup>nd</sup> Brazoria Depot Aerial View – 1939



RR  
depot

BCHM collection photo

# The 2<sup>nd</sup> Brazoria Depot Aerial View – 1999



RR  
Depot  
site

Jim Williams collection photo

# The Brazoria Depot freight end, relocated north of original location



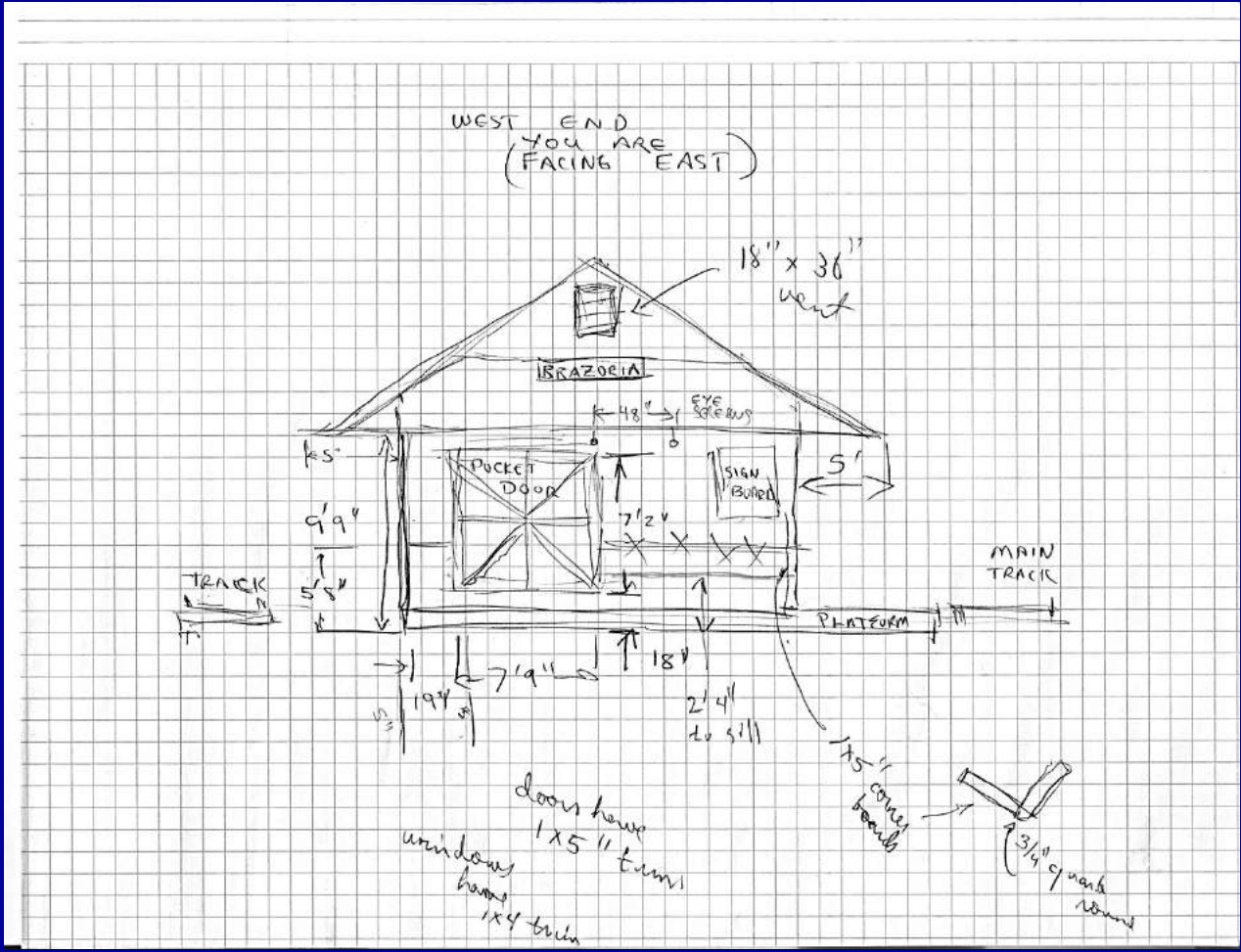
DORIS SETZER collection photo

# Roof details – ridge line

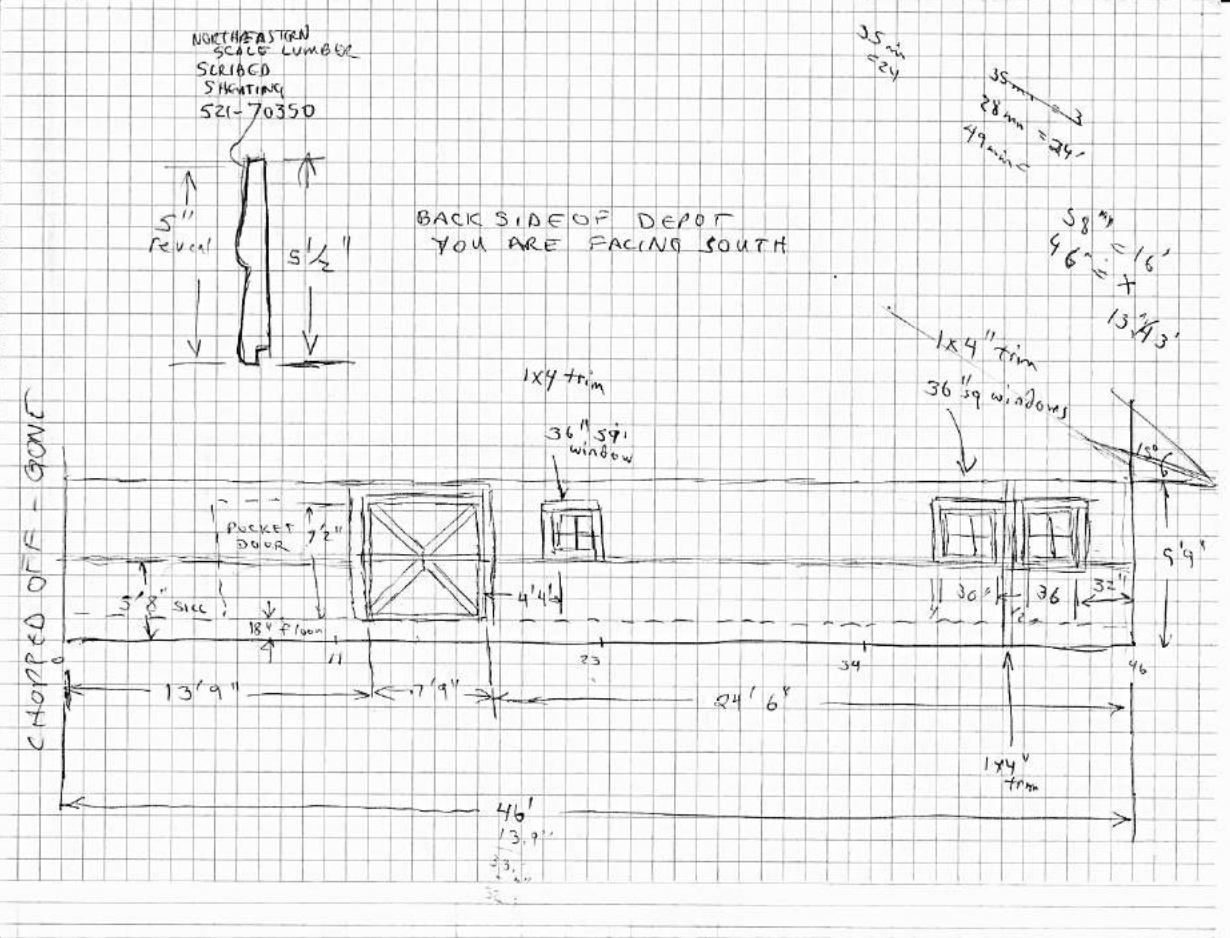


Jim Williams collection photo

# Dimensions of freight half of depot - West end

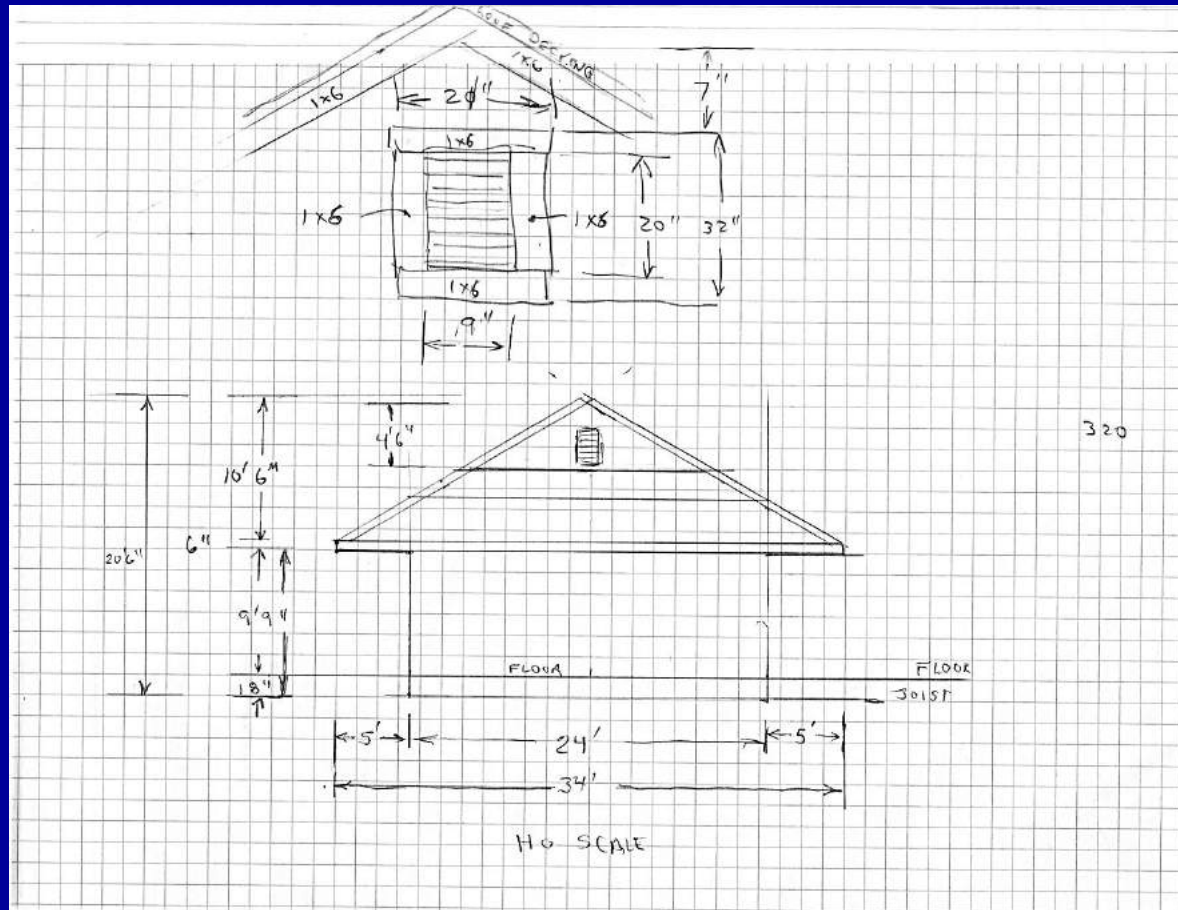


# Dimensions of freight half of depot - North end

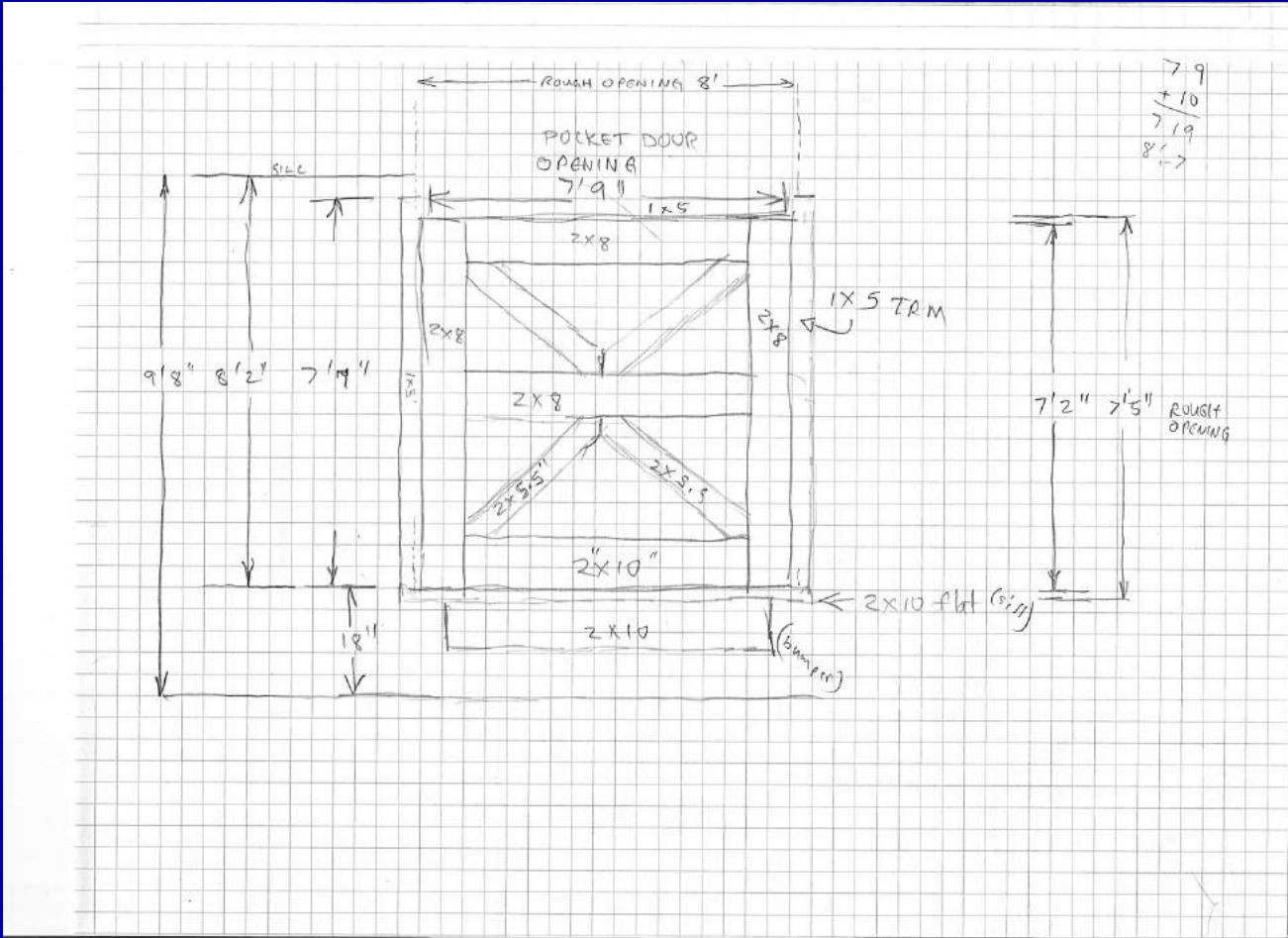




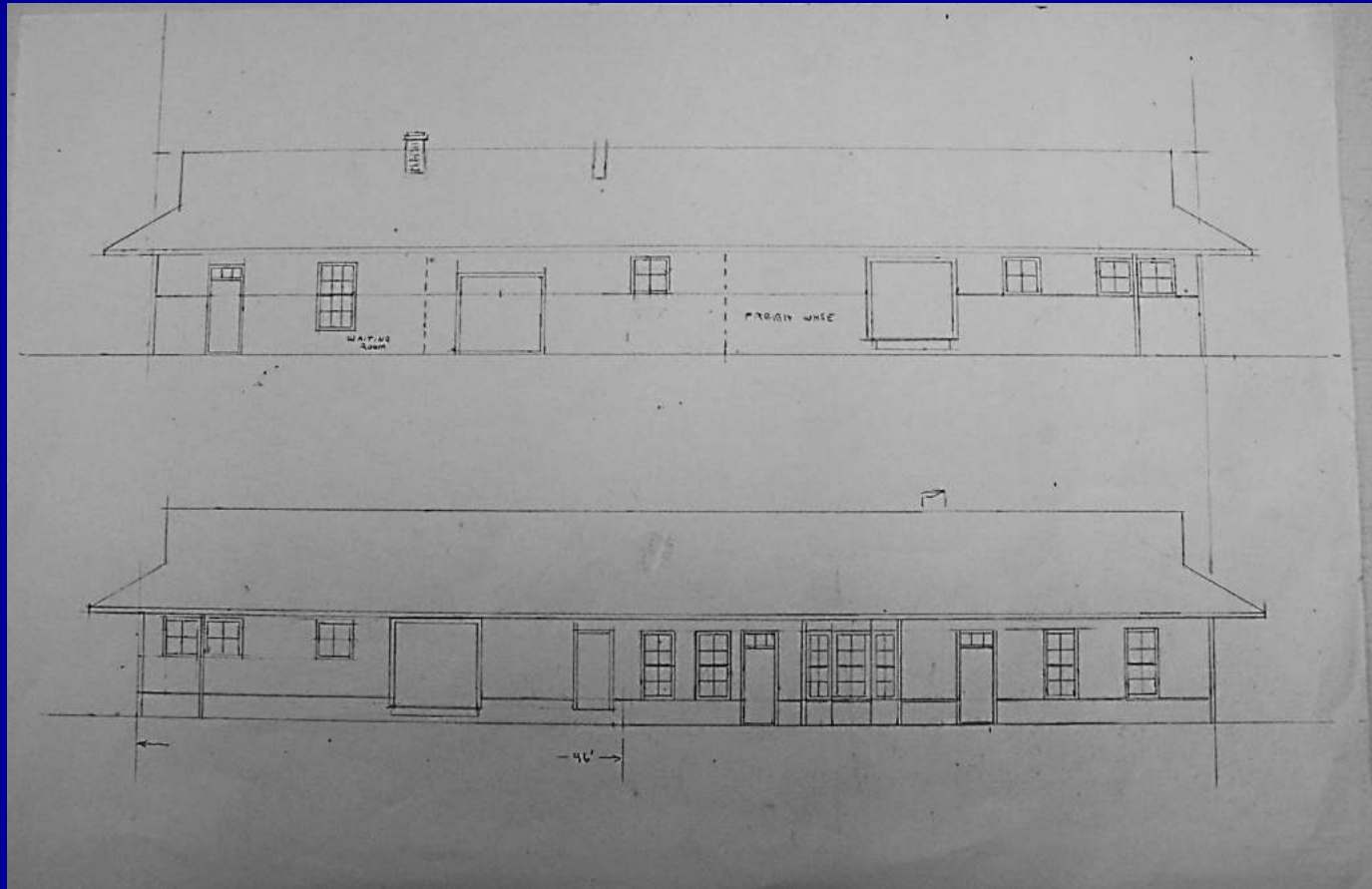
# Dimensions of freight half of depot - Roof details



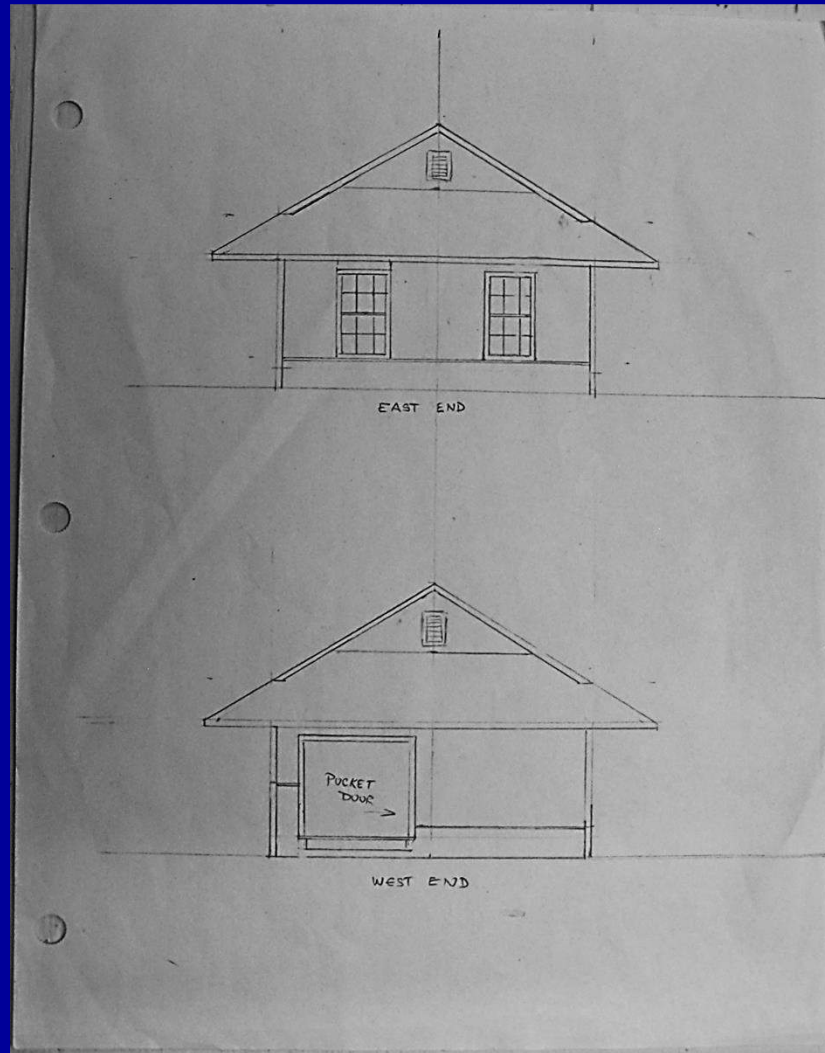
# Dimensions of pocket doors



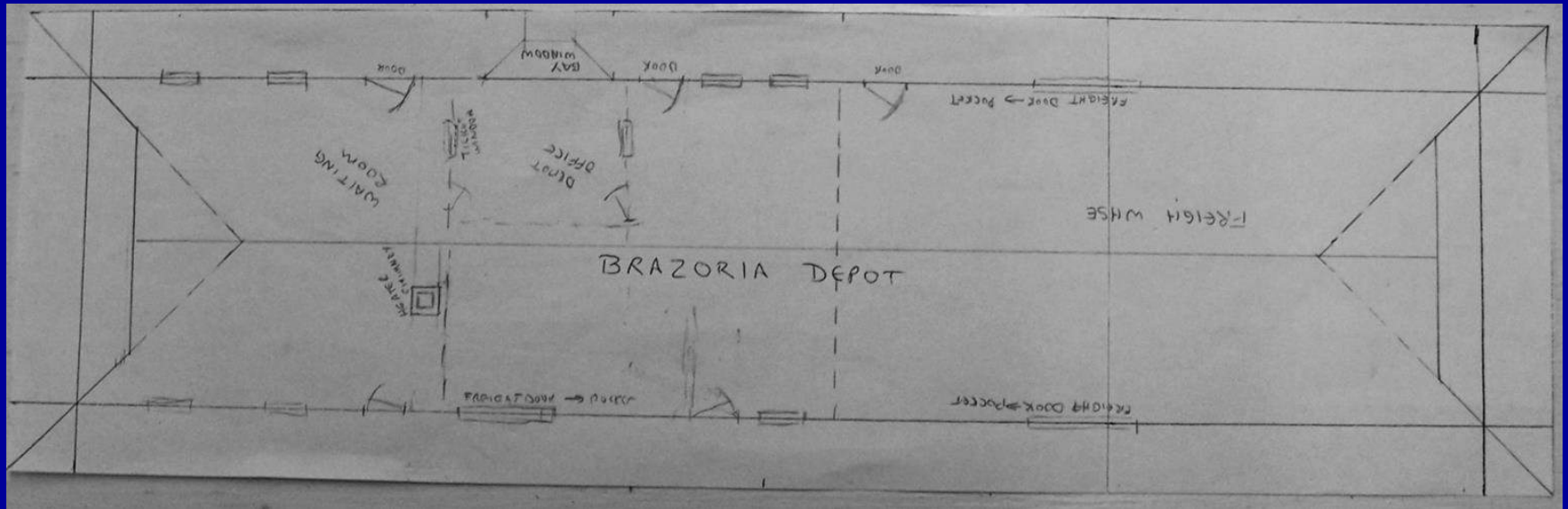
# H0 scale drawings – side views



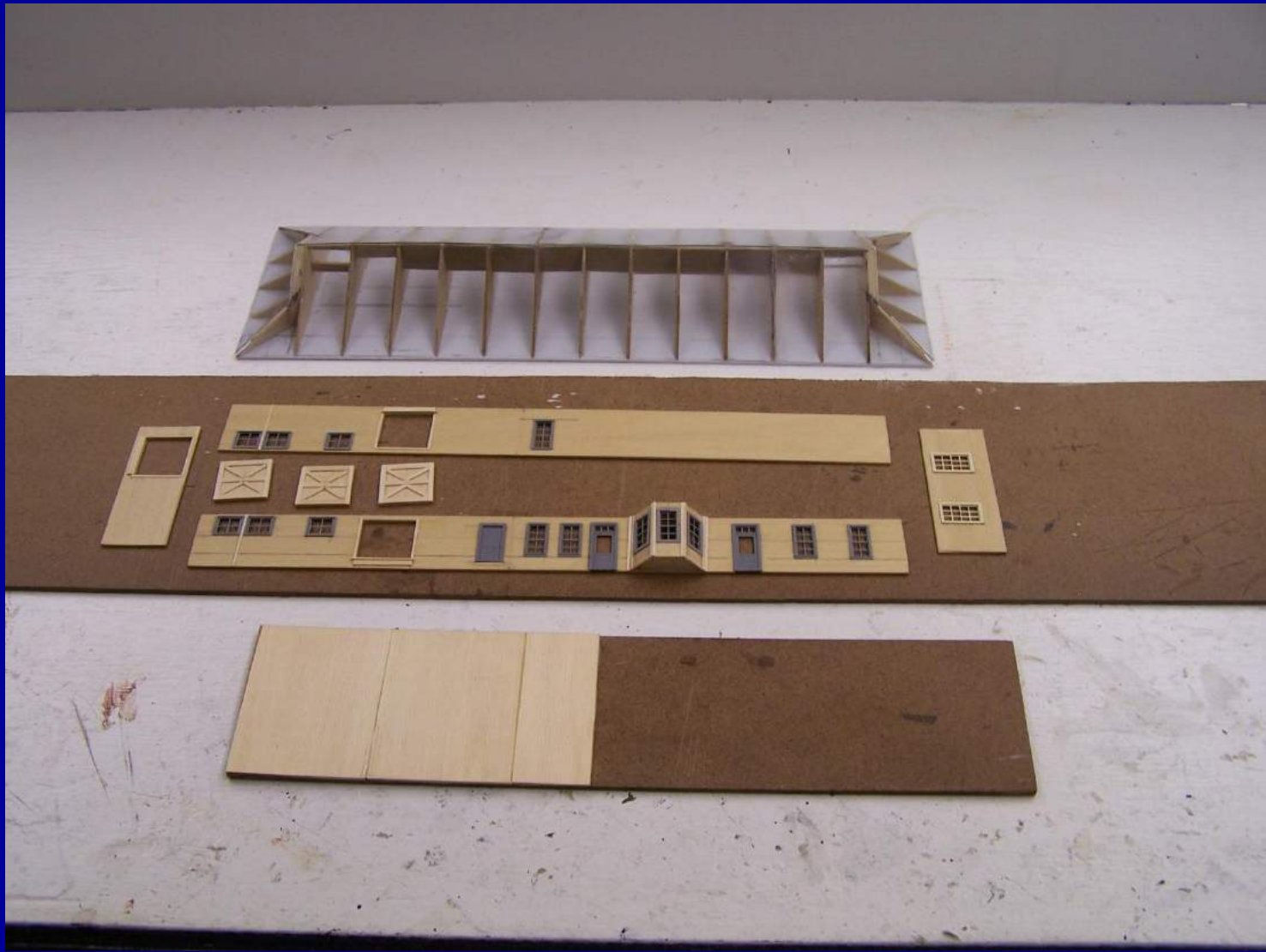
# HO scale drawings – end views



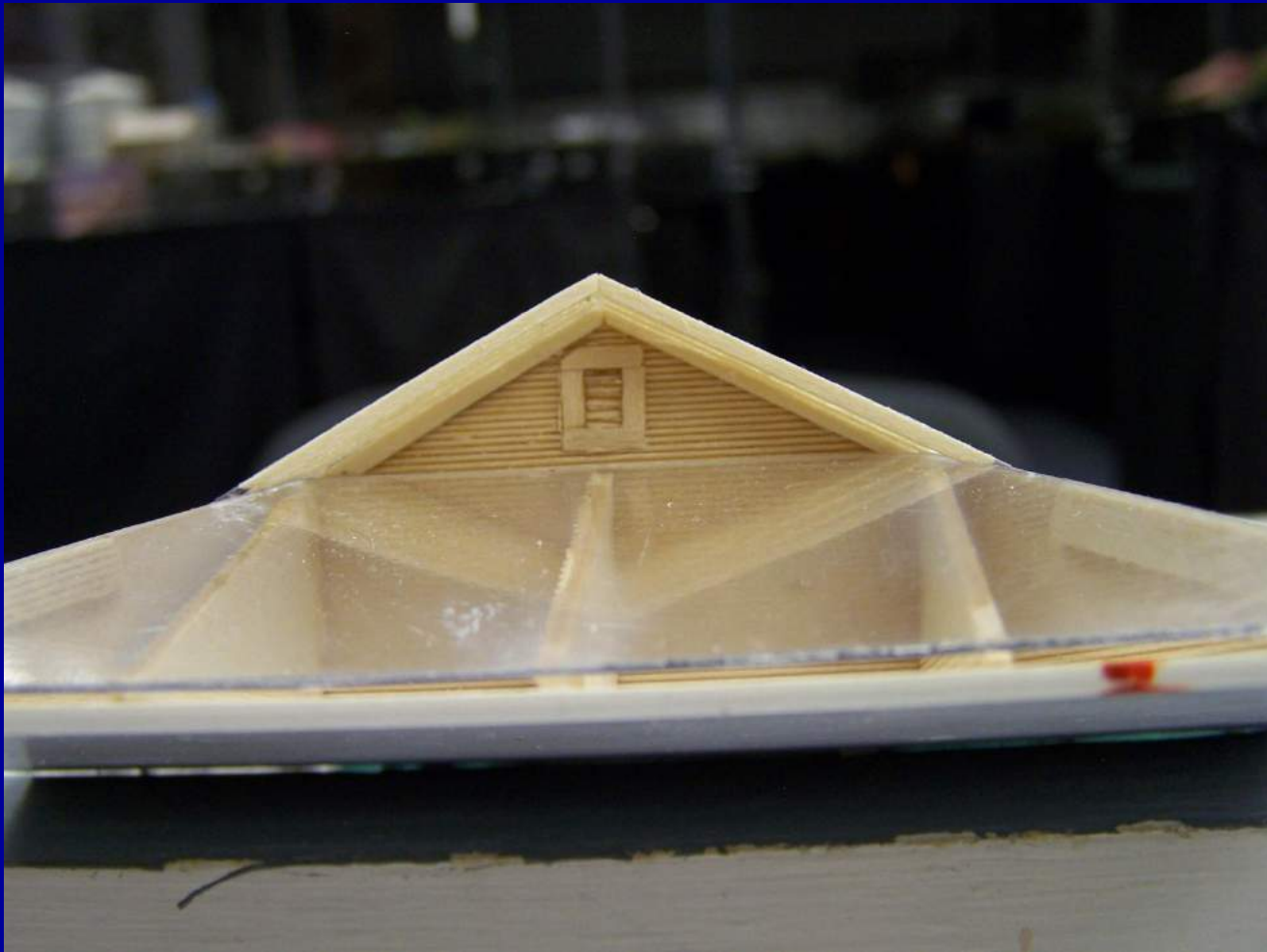
# H0 scale drawings – plan view



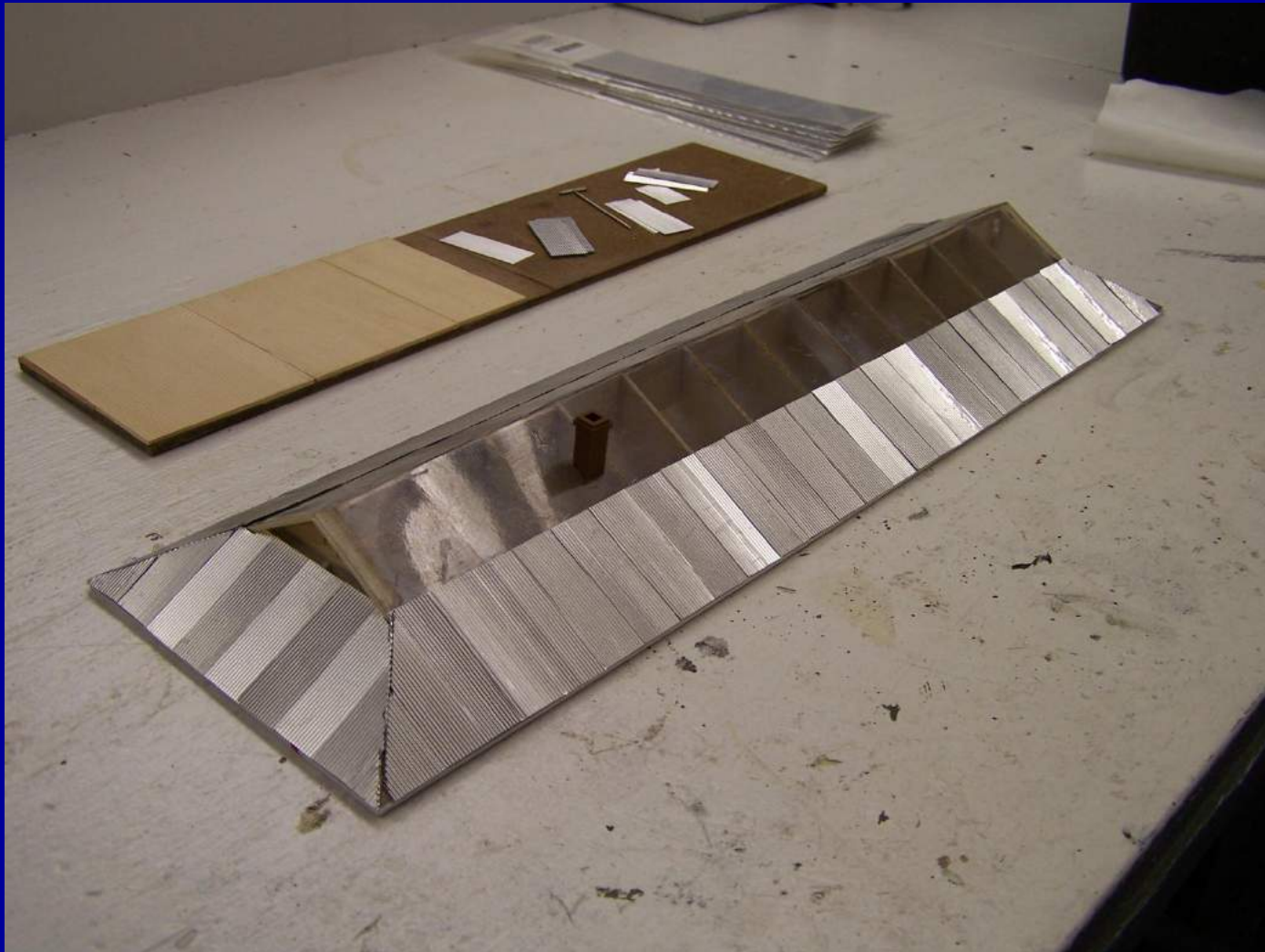
# Exterior walls, pocket doors, roof and floor



# End view of roof - vents

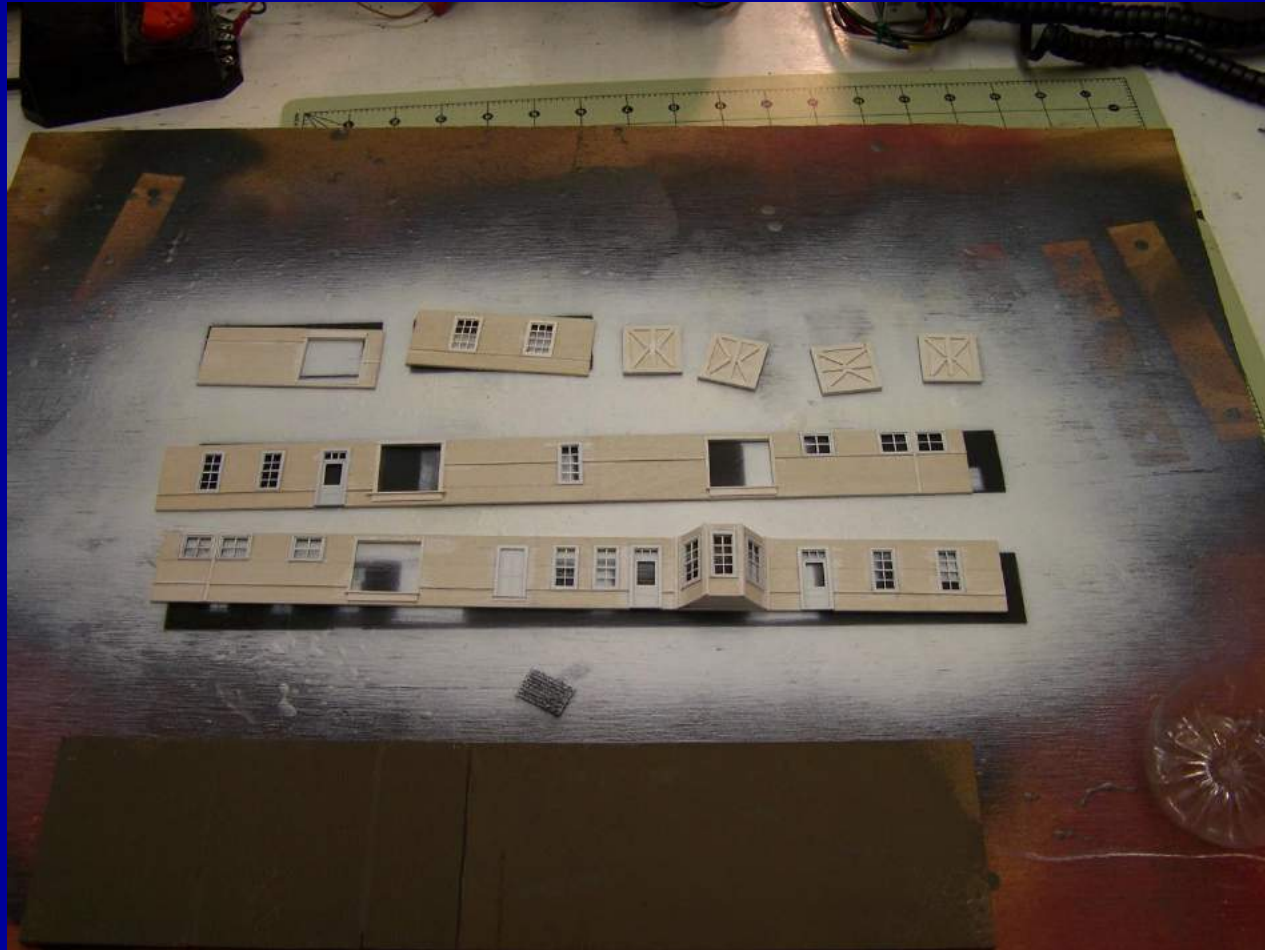


# Applying tin panels to roof





# Primer coat of paint on exterior walls



# Exterior walls assembled with pocket doors



# Prepare train layout by clearing space for the depot scene - before



# Prepare train layout by clearing space for the depot scene - after



# Preparing landscape around building – buildup 1/4”



# Landscaping around building – nearly done



# Add depot signs, parking bumper posts



**Add semaphore, power poles, storage buildings, streets, wig-wags and track-switch control panel**





**Note the exhaust vent for the restrooms – it rotates too!**



# Add steps, landings, and platforms



**Add other nearby businesses,  
and the Mopac stock pen**



# The two Mopac storage buildings West of the Brazoria depot.



DORIS SETZER collection photo

# The End