



**Building an HO scale model of
the second depot at Sweeny
by Jim Williams**

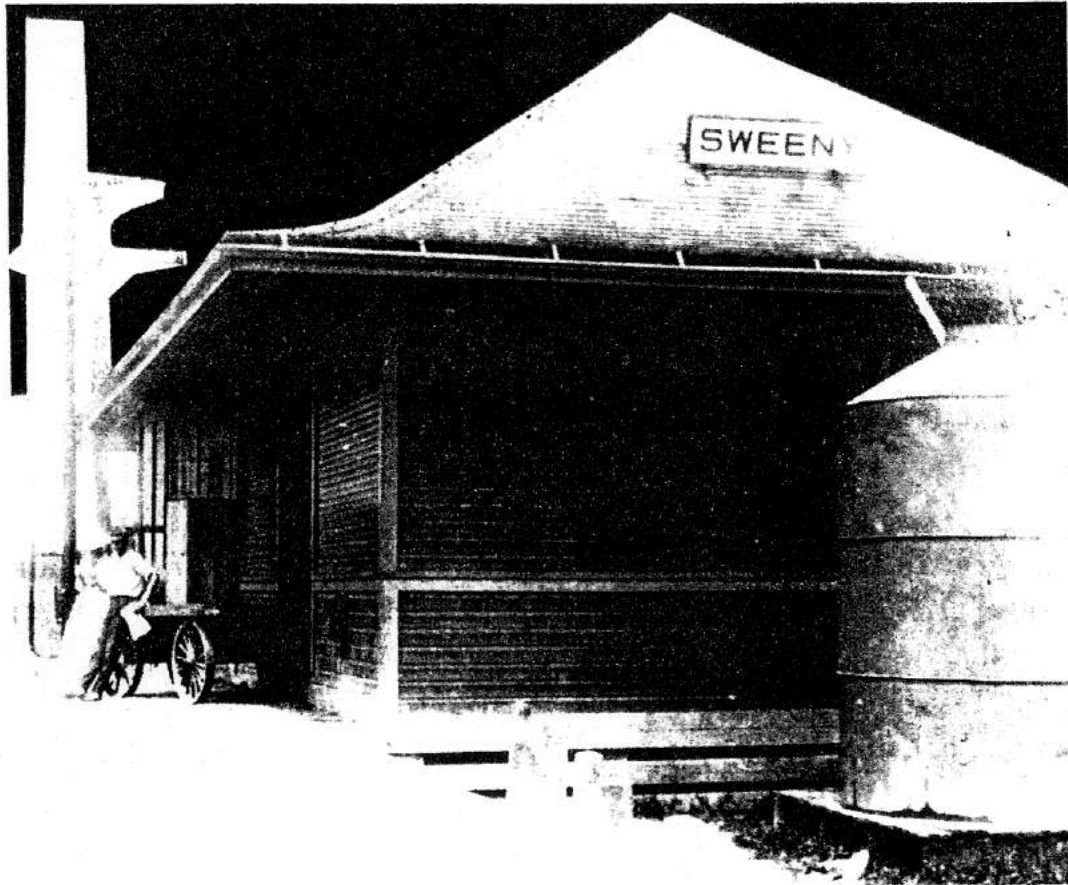
The building burned in May, 1961

The 1st Depot at Sweeny



BCHM collection photo

The 2nd Sweeny Depot - early



THE RAILROAD DEPOT

BCHM collection photo

The 2nd Sweeny Depot (ca 1940's)



BCHM collection photo

The 2nd Sweeny Depot – 1947



P86-13.2

APRIL 1947 STUDER S.A. EX.

The 2nd Sweeny Depot - 1950's



Anderson Lumber photo

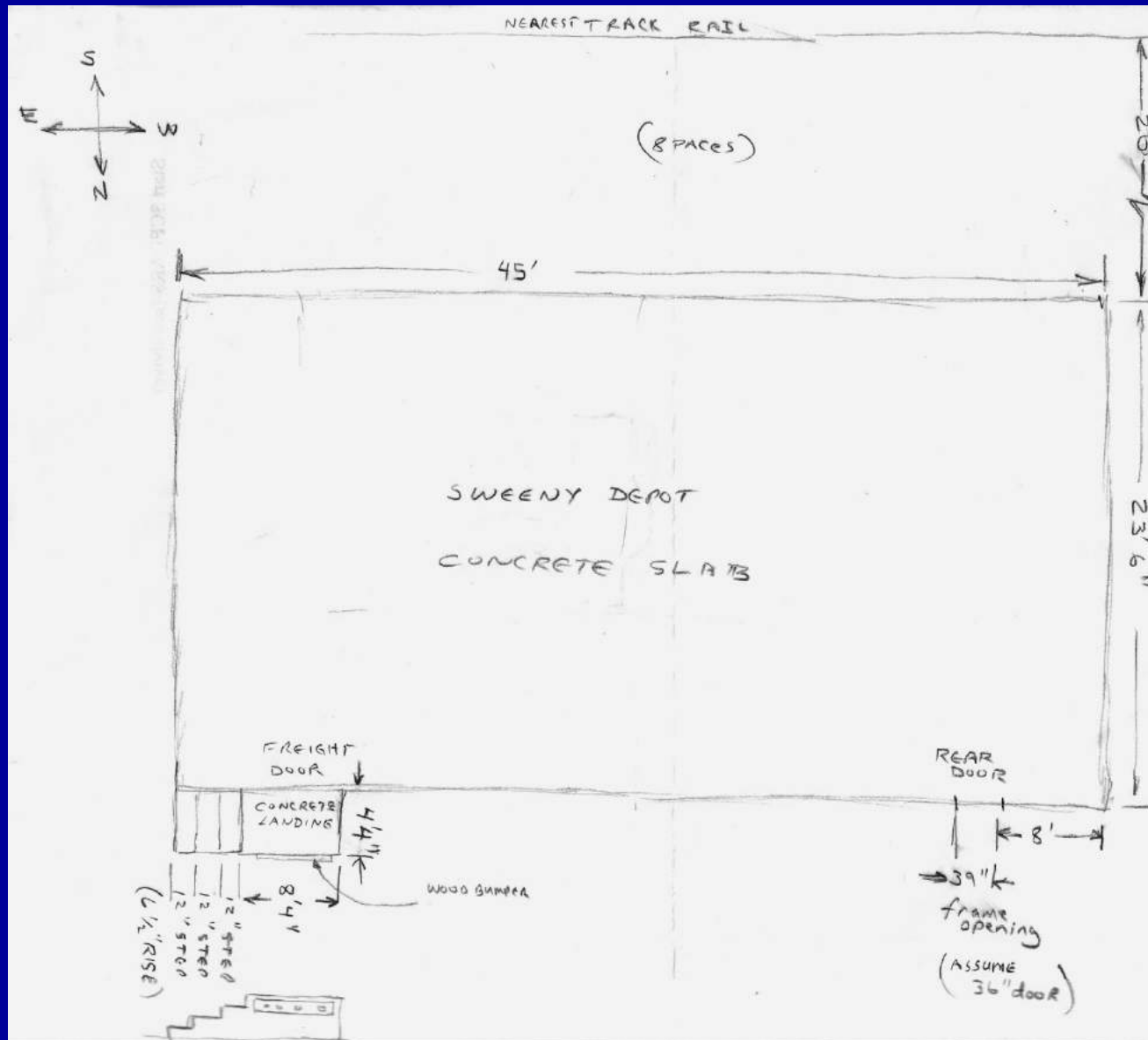
The 3rd Sweeny Depot - 1973



MoP DEPOT SWEENY, TEXAS 1973

Jim Williams collection photo

Sketch of concrete slab

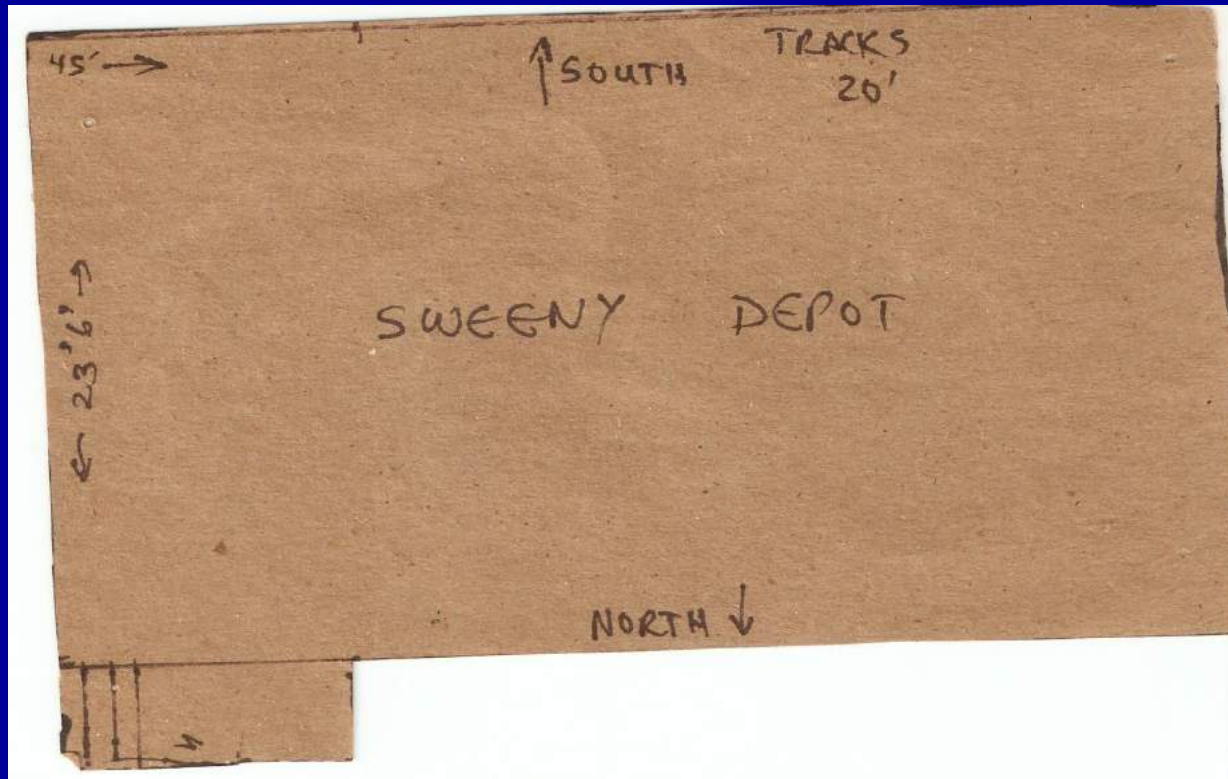


Dimensions from slab

**Foundation – 23'-6" wide by 45' long
44" by 8'-4" rear landing, 3 12" steps
36" wide rear door**

**Interior walls for bathrooms, waiting
room, office, and freight wall not
modelled.**

HO scale template of slab



Dimensions from photos

Walls - 11'-7" tall

Roof – 8' tall, 33' wide, 54' long

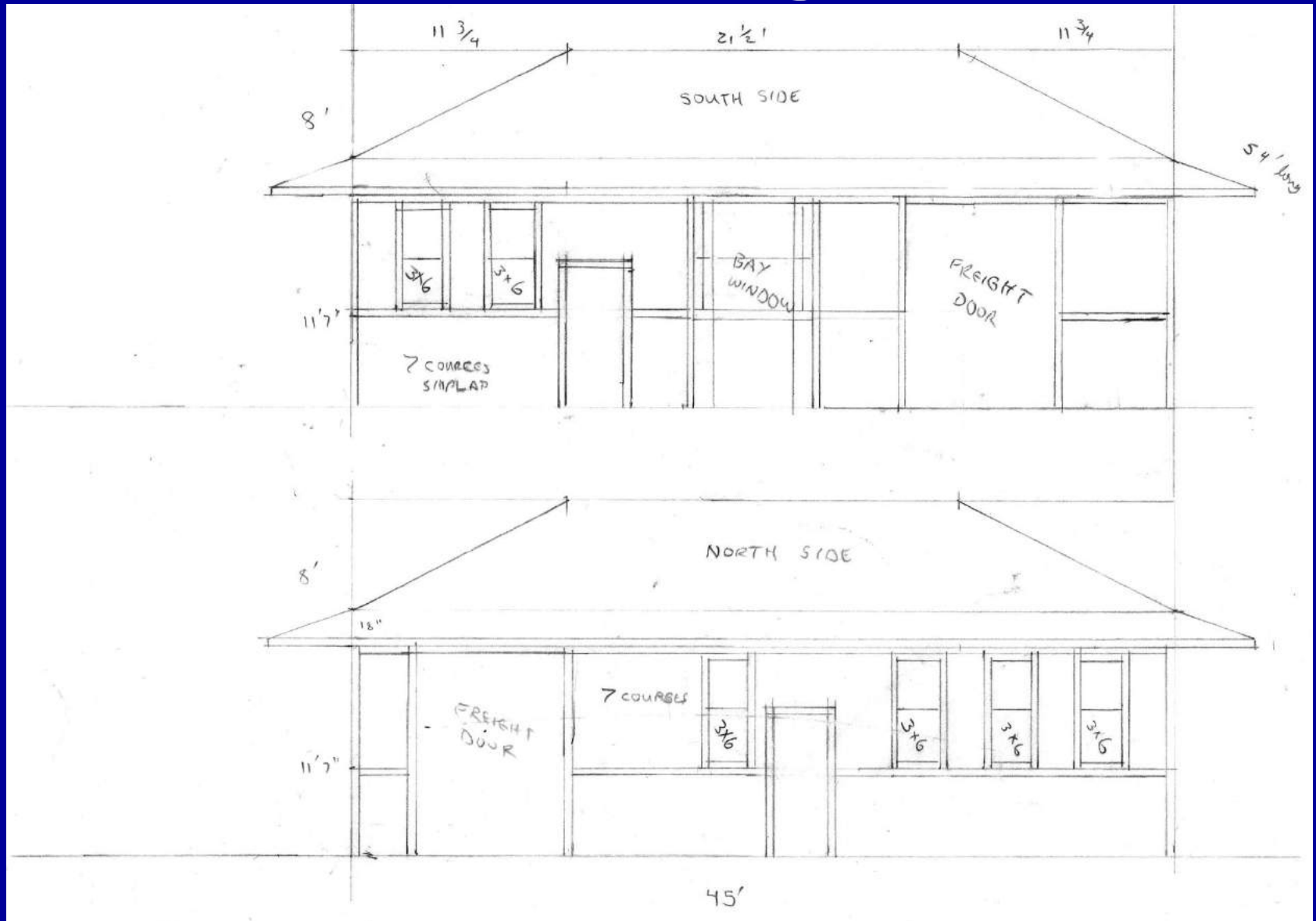
Three exterior doors – 36" wide

Two freight doors – 96" wide

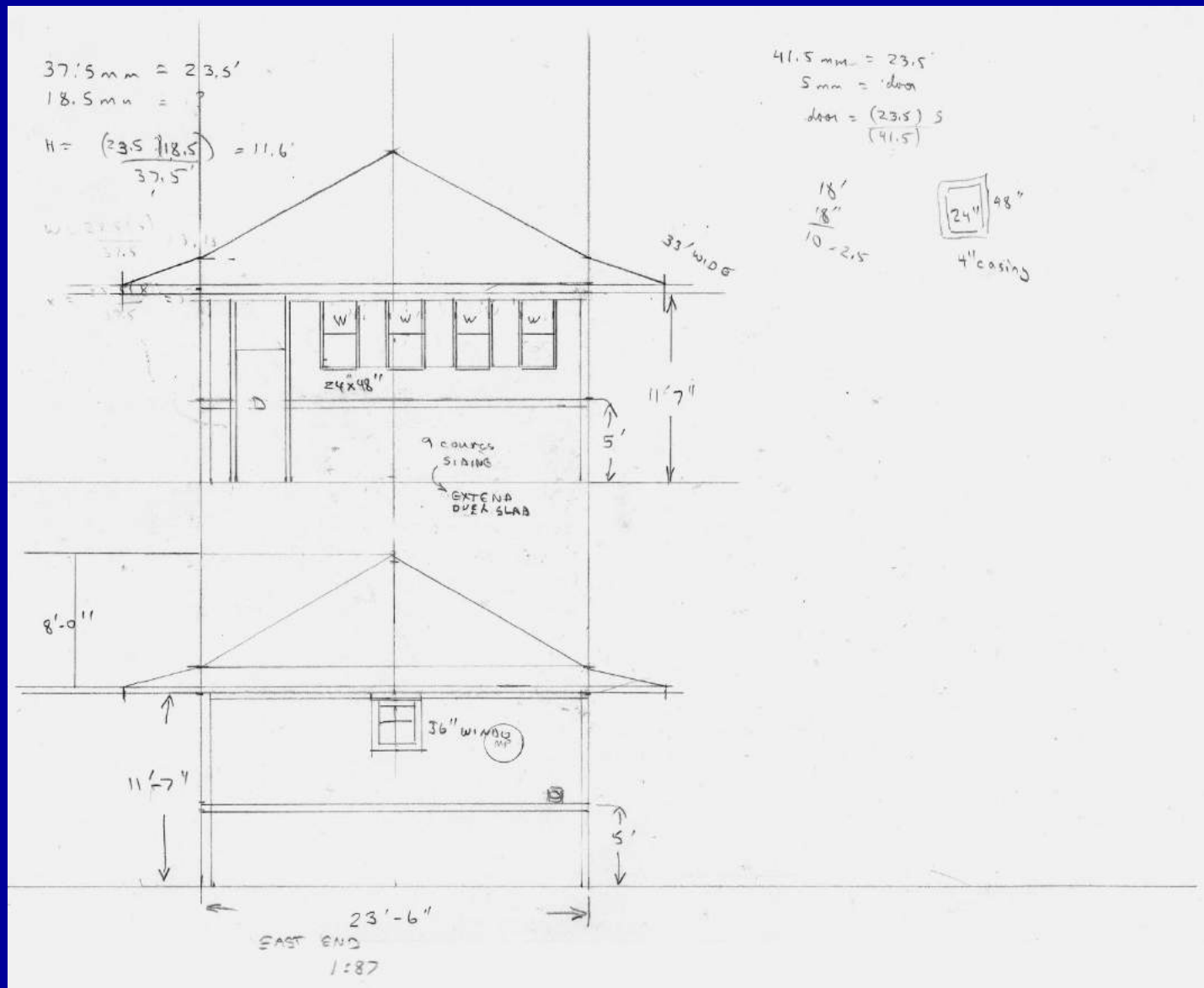
Eleven windows, various sizes

One bay window, 7' wide, 3 segments

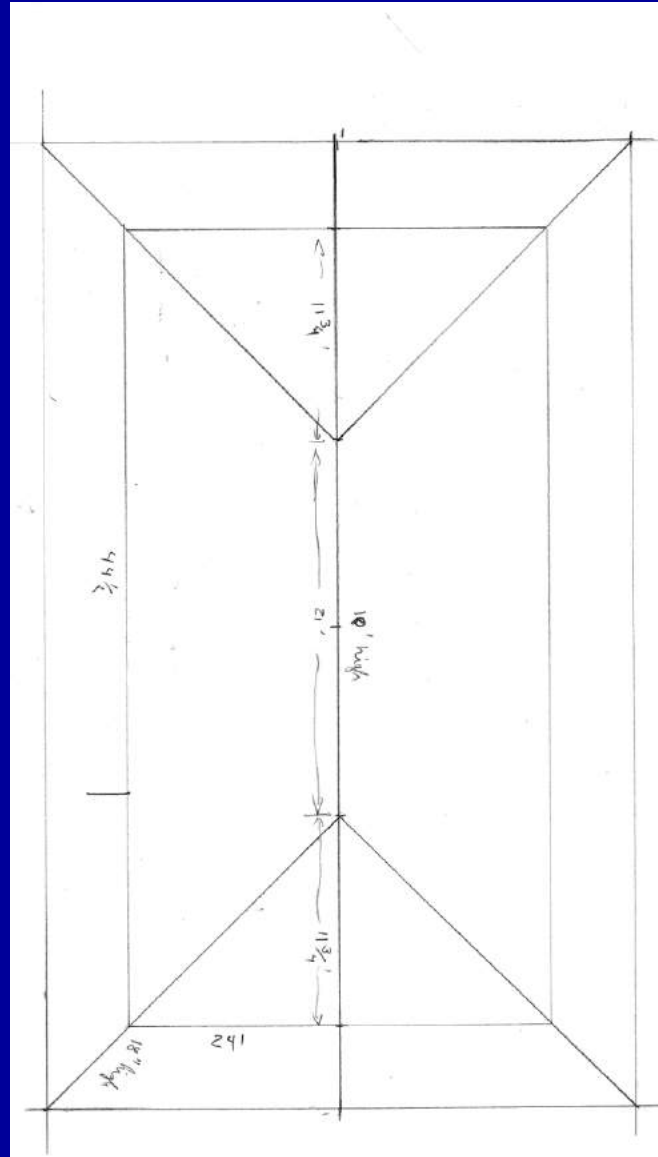
Ho scale drawings - sides



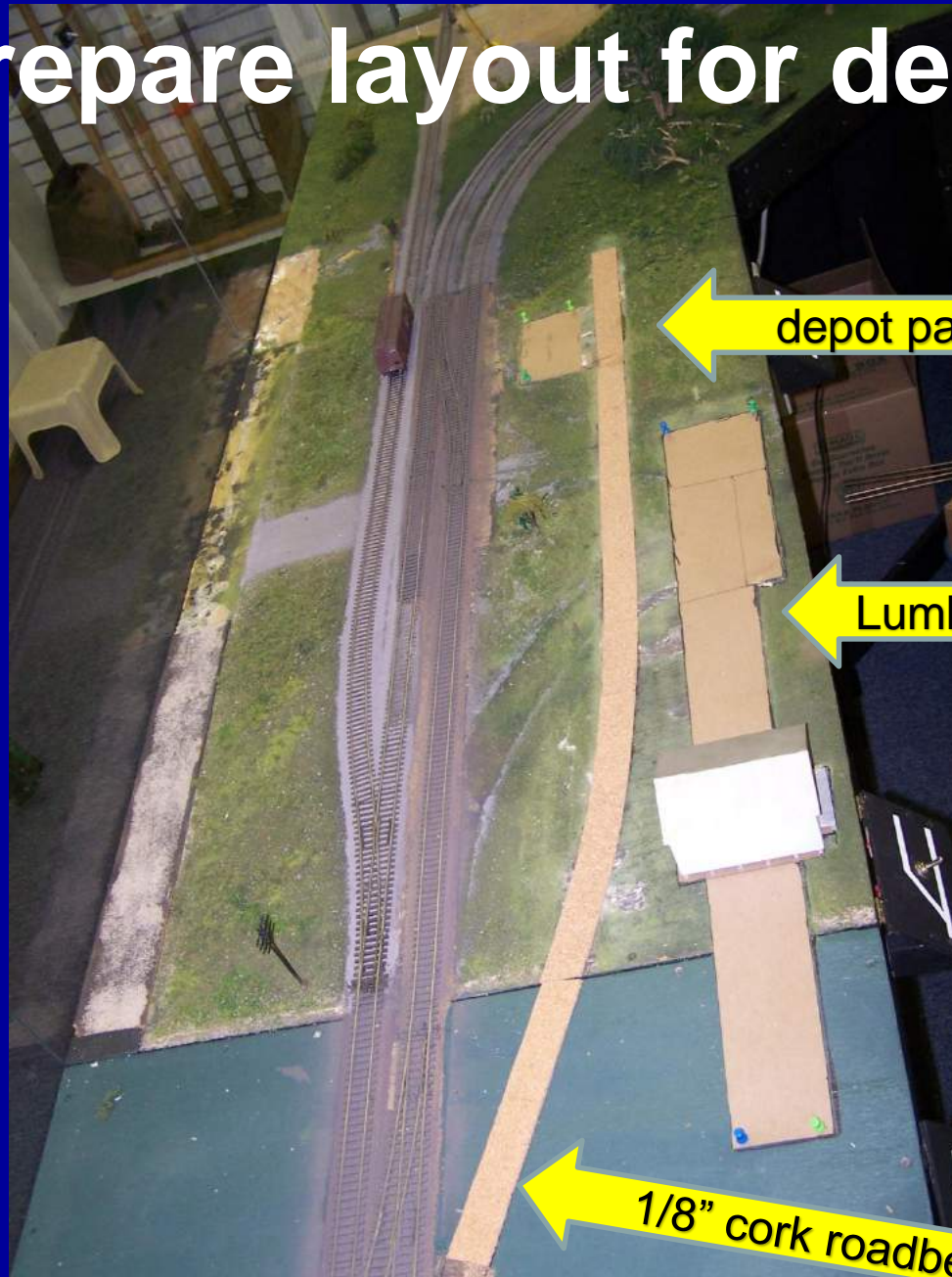
No scale drawings - ends



Ho scale drawings – plan view



Prepare layout for depot

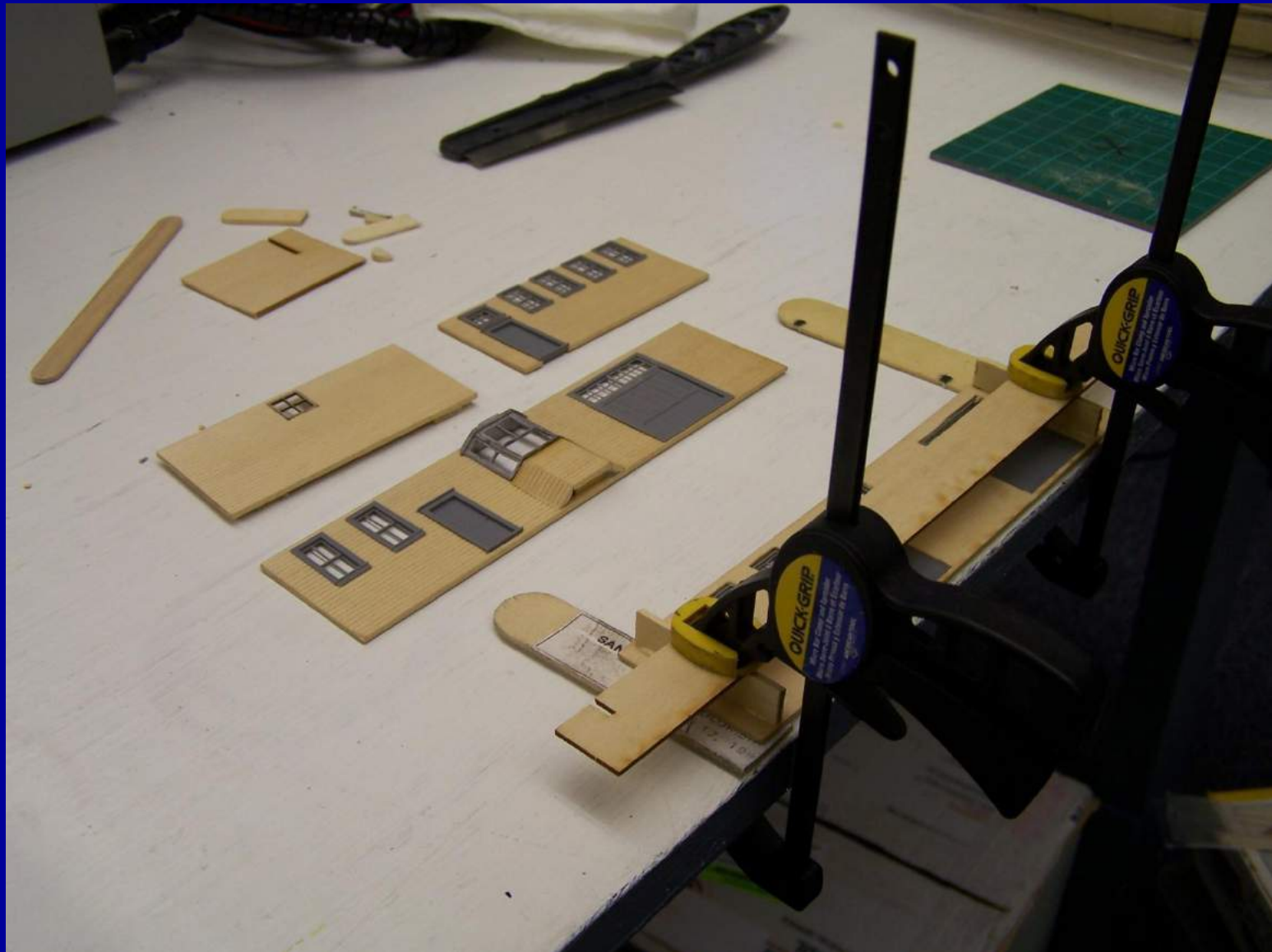


depot paper template

Lumber yard template

1/8" cork roadbed

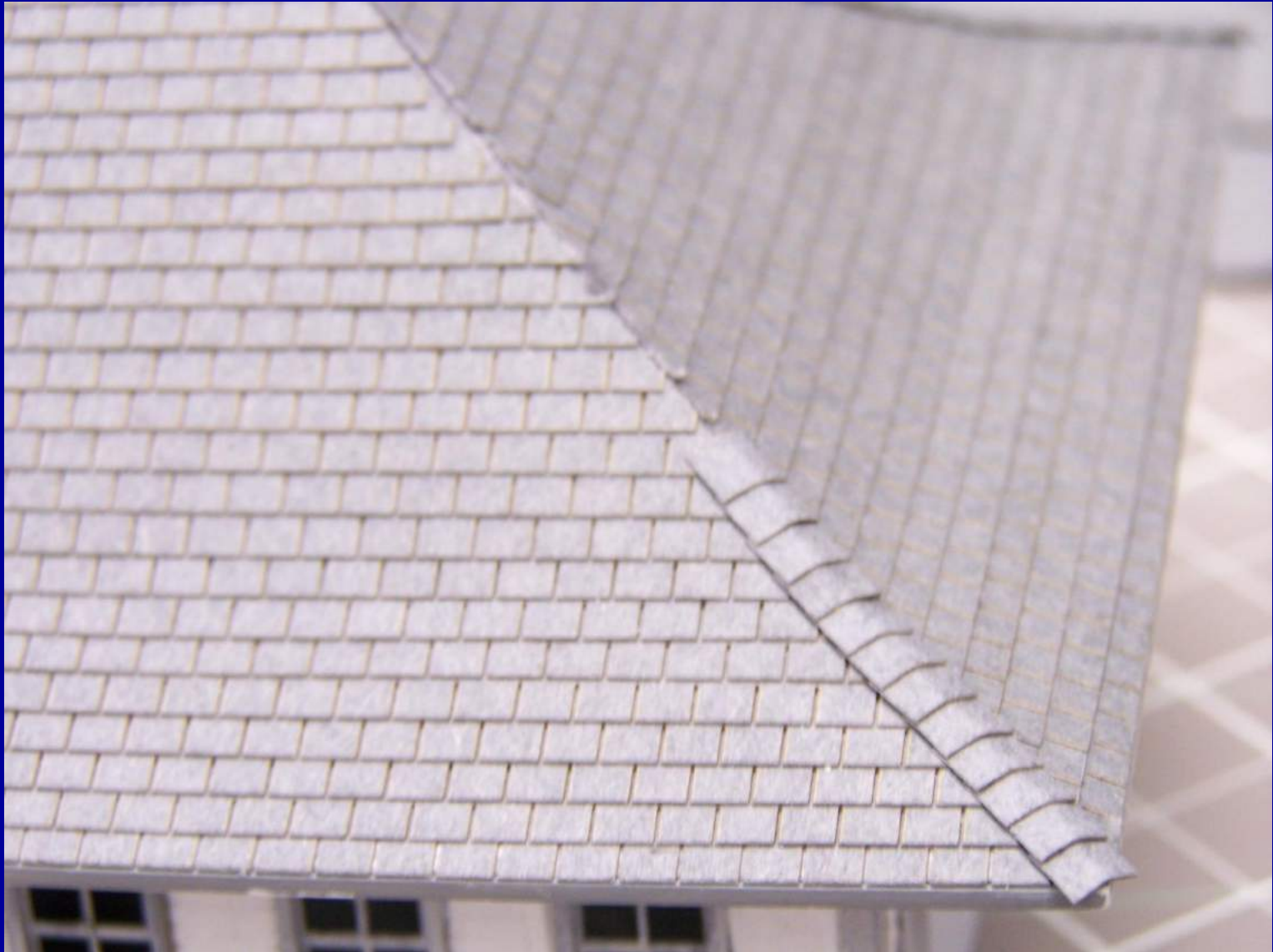
Constructing exterior walls



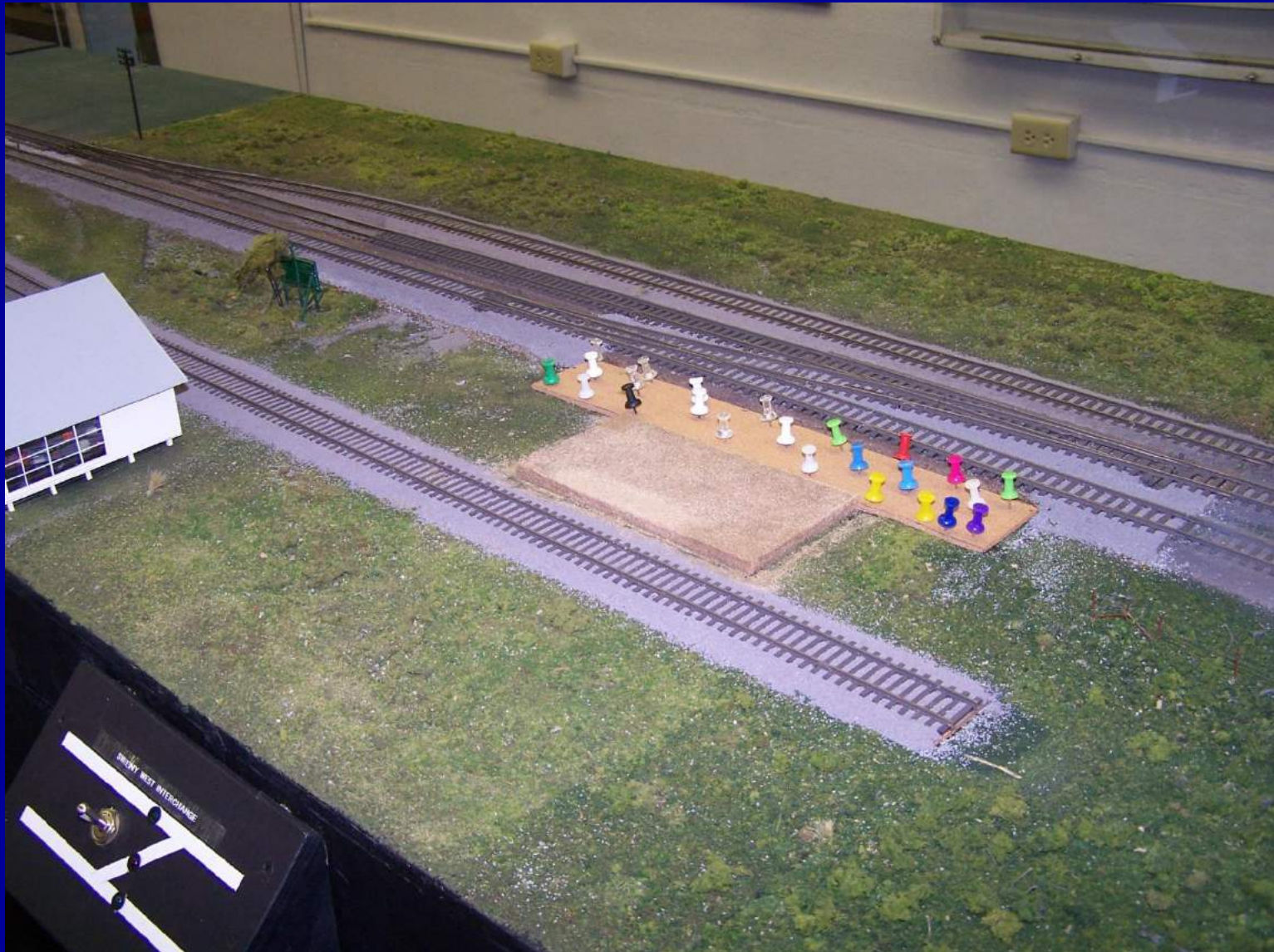
Constructing exterior walls



Applying shingles



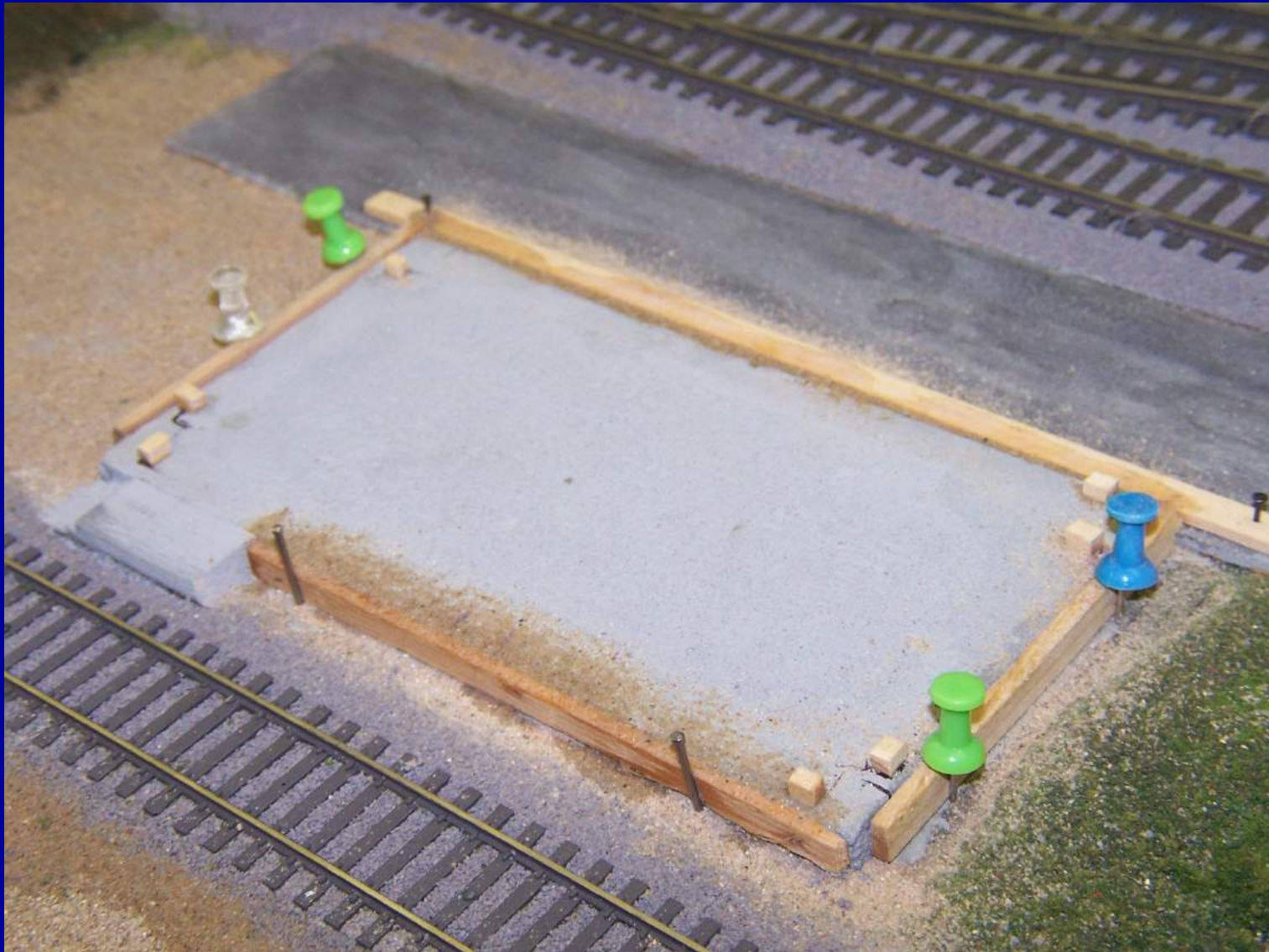
Sand foundation, cork sidewalk



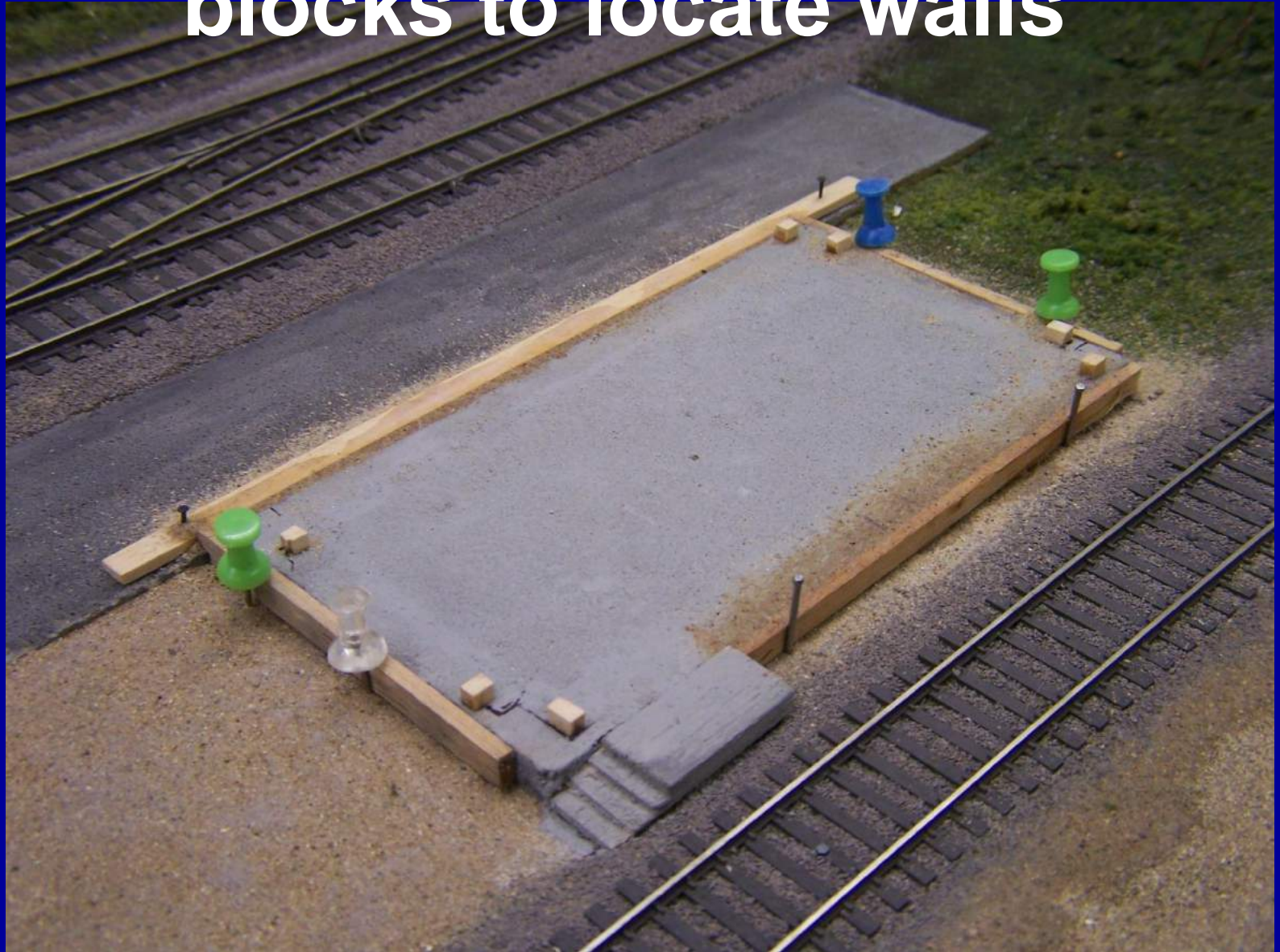
Foundation ready for painting



Foundation repairs



Foundation repairs, added blocks to locate walls



View from NE corner



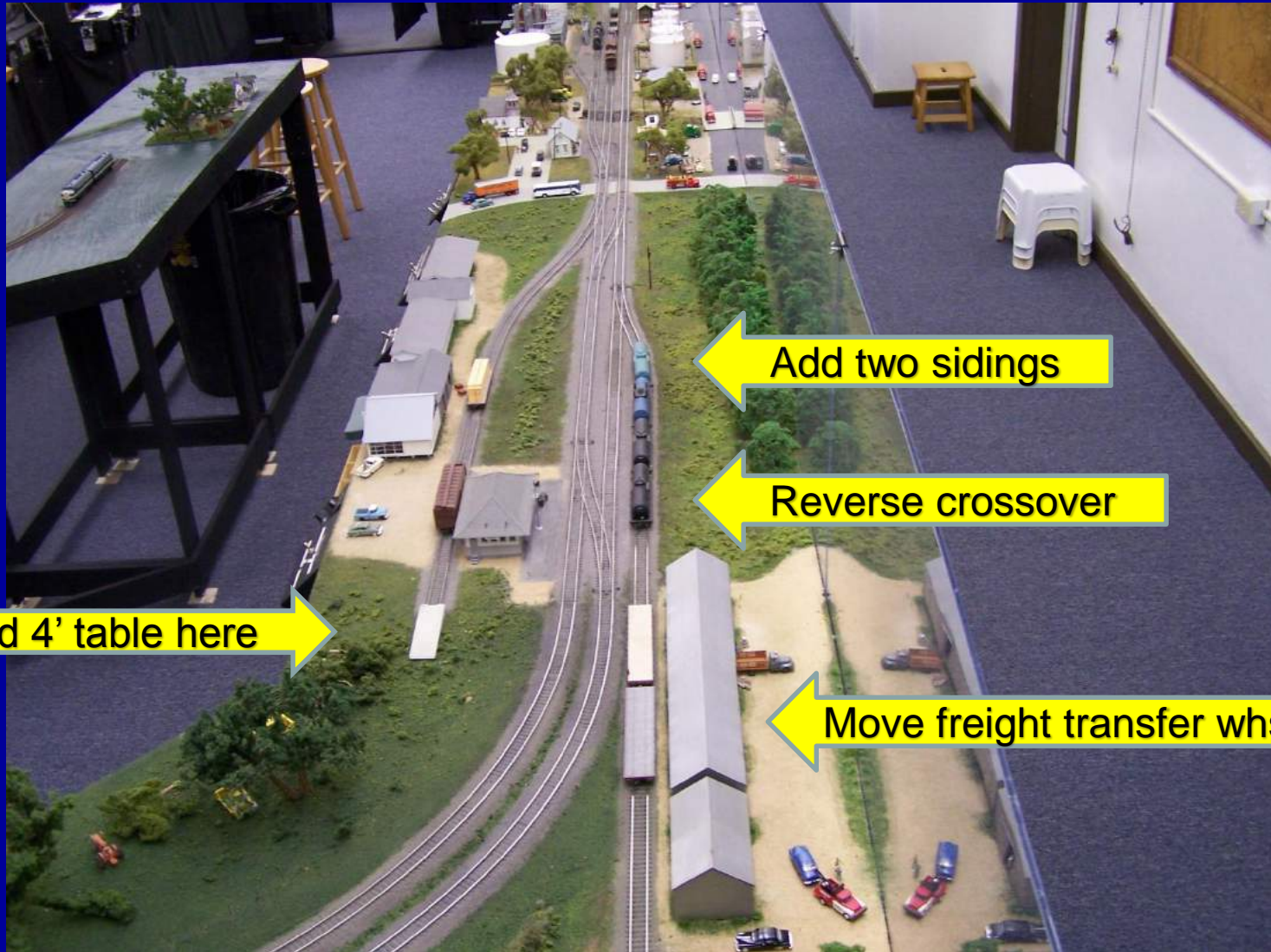
View from NW corner



View from SE corner



Overhead view – more to do



Add 4' table here

Add two sidings

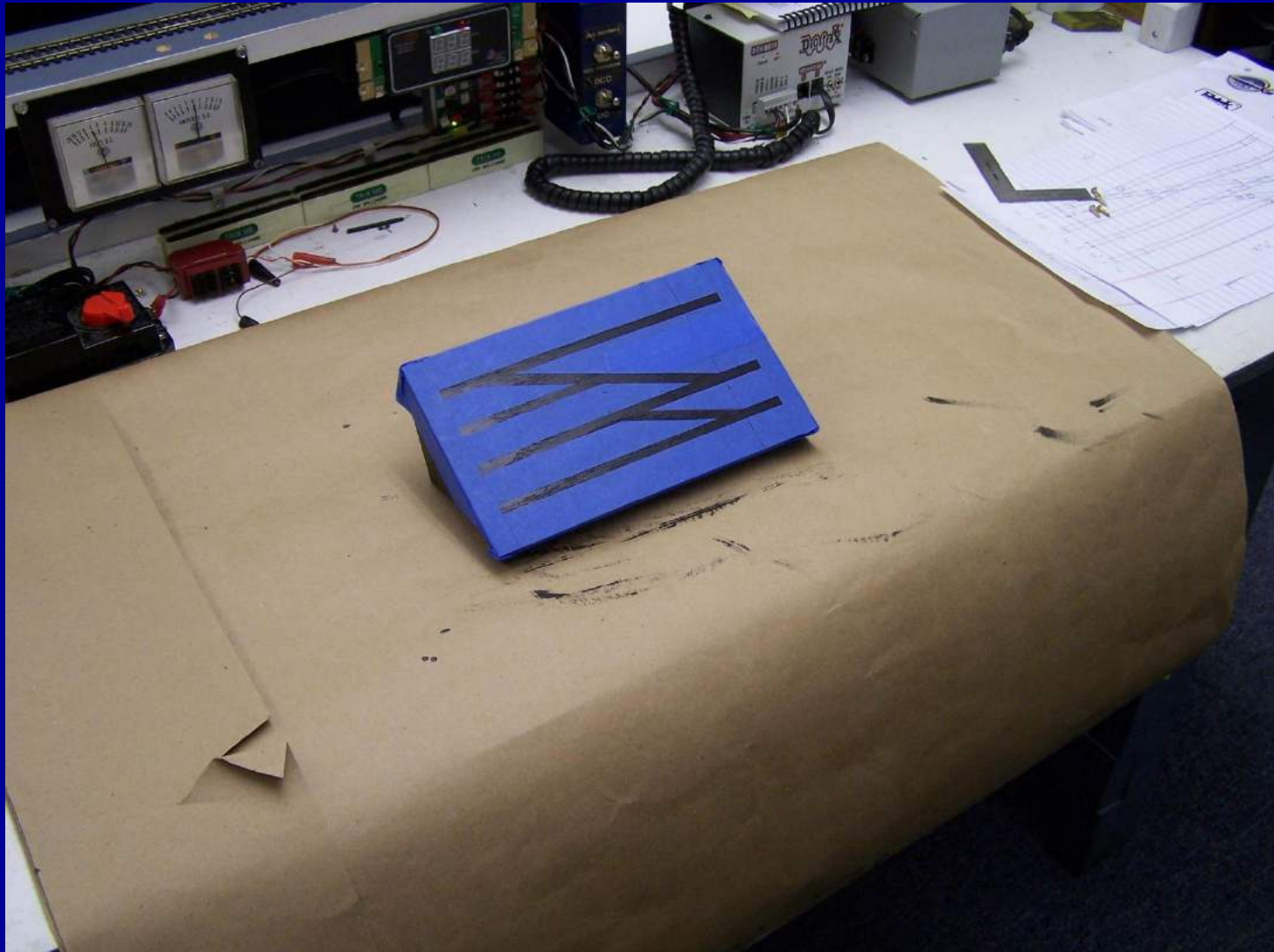
Reverse crossover

Move freight transfer whse

Add 4' table



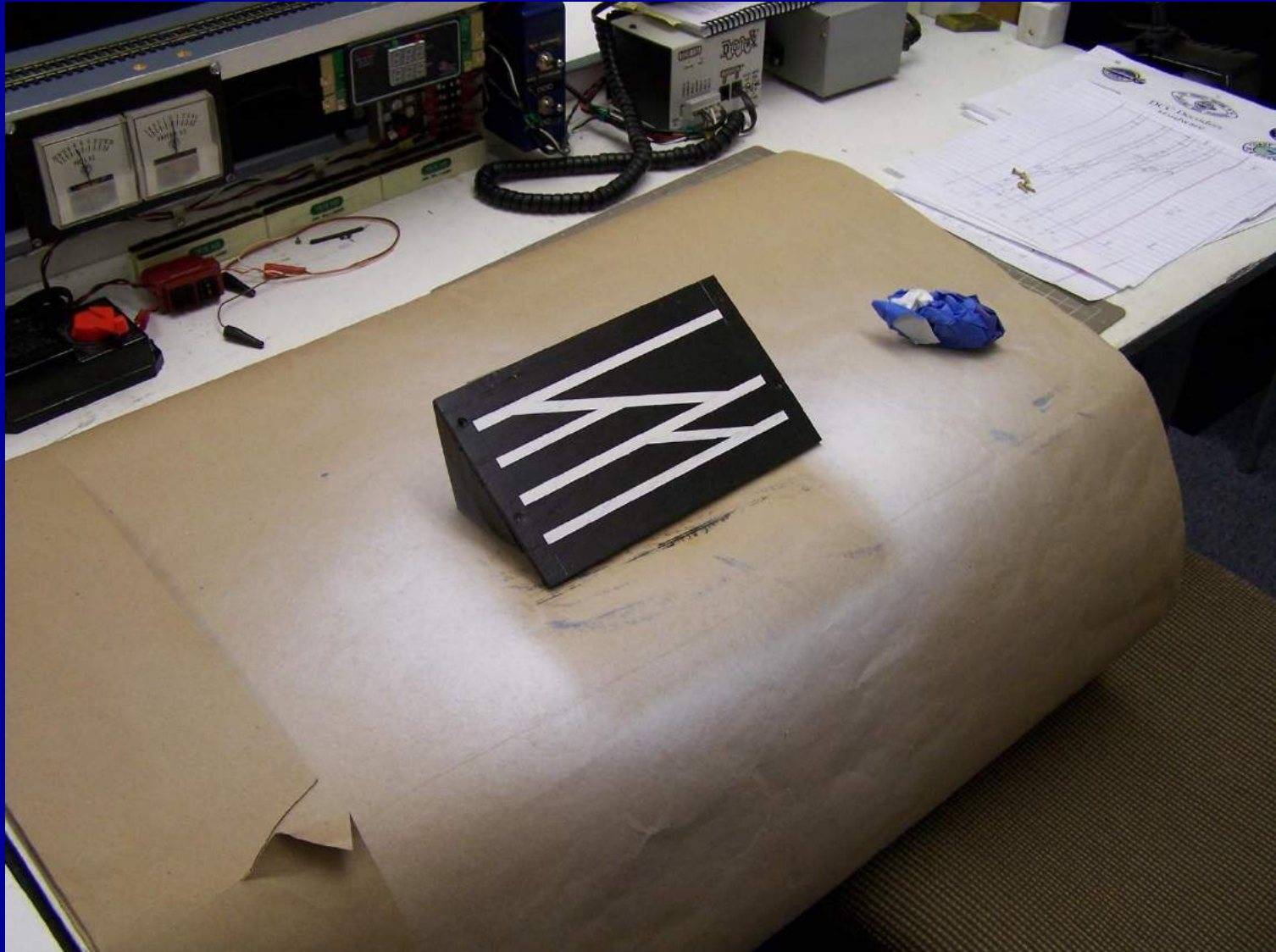
Add control panel



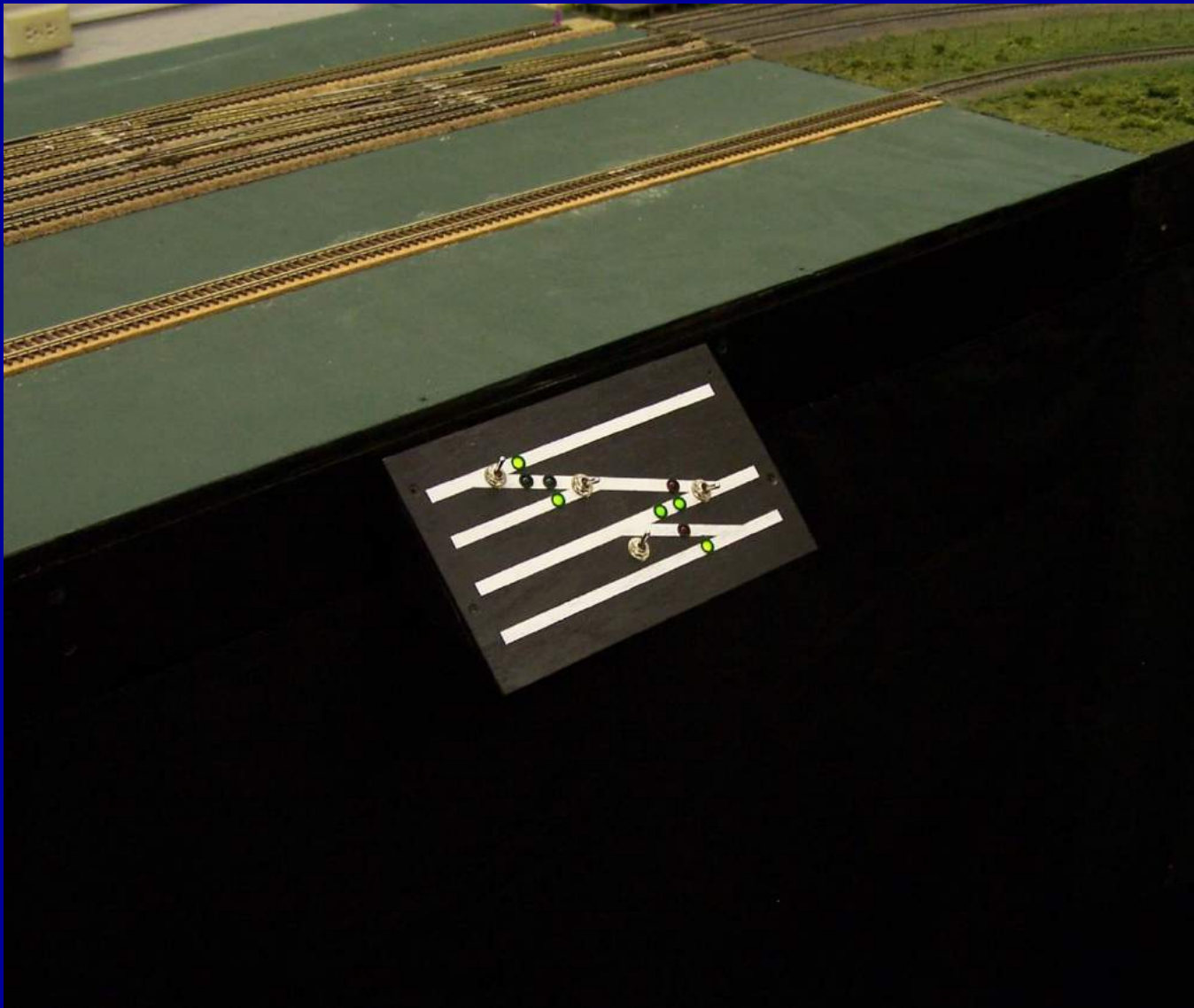
Add control panel



Add control panel



Add control panel



Overhead view after lengthening 4'



Done (well almost)



Remove window

Smith residents driveway

Done





WARNING !

MODEL RAILROAD DISEASE (TRAINITOUS)

ADULT MALES VERY SUSCEPTIBLE

SYMPTOMS: Continual complaint as to need more time for collecting, running trains for a more constructive hobby. Patient has a blank expression, sometimes being deaf to kids, wife, and others except for those with the same disease. Always haunts basement, attic or garage. Won't do work around house. Has nose in model railroad catalogues and magazines. Often found wandering around railroad shops with camera. Mumbles numbers such as 4-6-2. No known cure.

DISEASE NOT FATAL

TREATMENT: Visit Brazos Valley Railroad Society
And operate model trains often as possible.