



**Building an HO scale model of  
the Harris-Badge Hardware store  
in Brazoria, Texas  
by Jim Williams**

**The building is still in use today  
as an antique salvage store**

# Scale Modelling process:

## Collect documentation:

- site location information
- photographs
- building dimensions

## Create scale drawings

## Obtain constructions materials:

- exterior walls, windows, roof, sidewalks
- interior walls, floors, doors
- utility poles, lights, mailboxes, etc.

## Assembly

## Paint & weathering

## Final details:

- interior furniture
- people, critters
- scenery

# Area modelled on BVRS club layout (30"x144")

USDA  
aerial  
photo  
1/29/1939

StLBM RR



BCHM collection photo

Located on the Southwest corner  
of the intersection of Highway 36  
and UP RR (StLBM) tracks.



BCHM collection photo

# The Harris-Badge Hardware



Upstairs  
used by  
Masons

Hardware  
store  
entrance

BCHM collection photo

# The Bolling Phillips Hardware



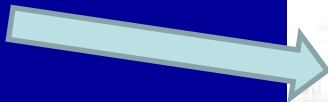
1930's



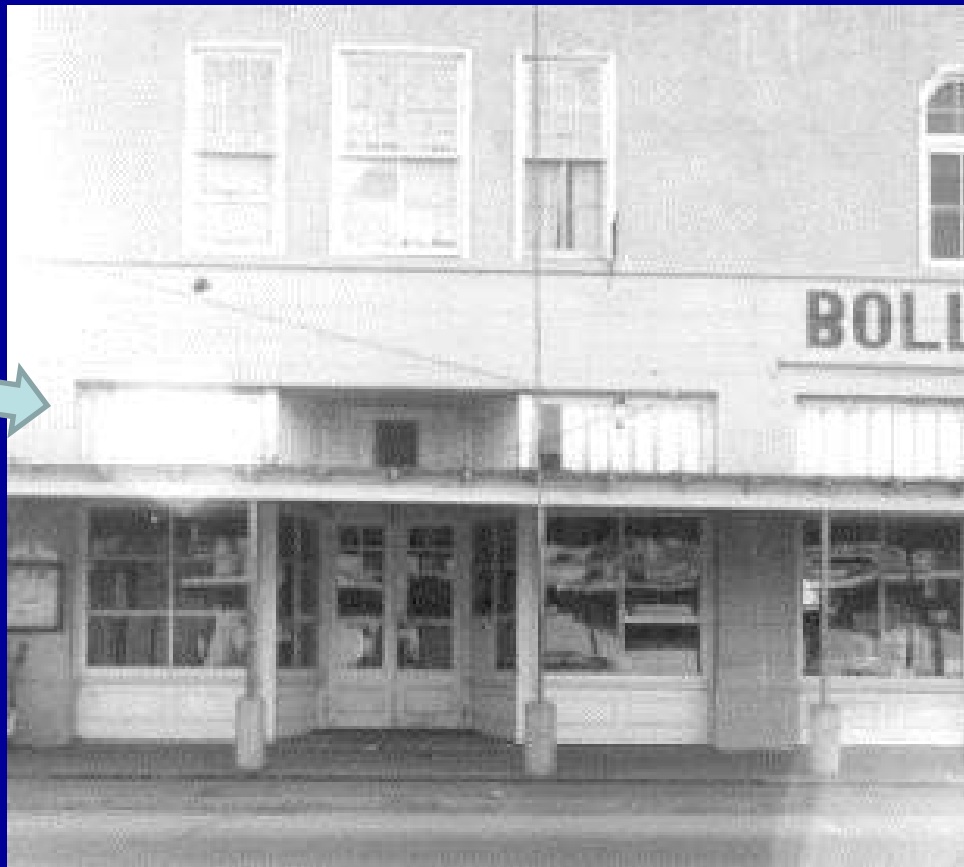
1940's

# The Bolling & Phillips Hardware

Upper windows  
painted over



Post Office



Sidewalk  
covered



Hardware  
store



BCHM collection photo

# The Brazoria Hardware Bldg. East side

Roof  
detail  
removed



Windows  
covered



Highway 36

Original  
entrance  
covered



Jim Williams collection photo



# The Brazoria Hardware Bldg. North side

Brazoria hardware store lettering is bleeding through

Original entrance covered with stone

Two windows covered

Light fixture removed

Mural painting

Door hinges reversed  
Now swings outward



September 2013

Jim Williams collection photo

# The Brazoria Hardware Bldg. West side

Electrical  
service



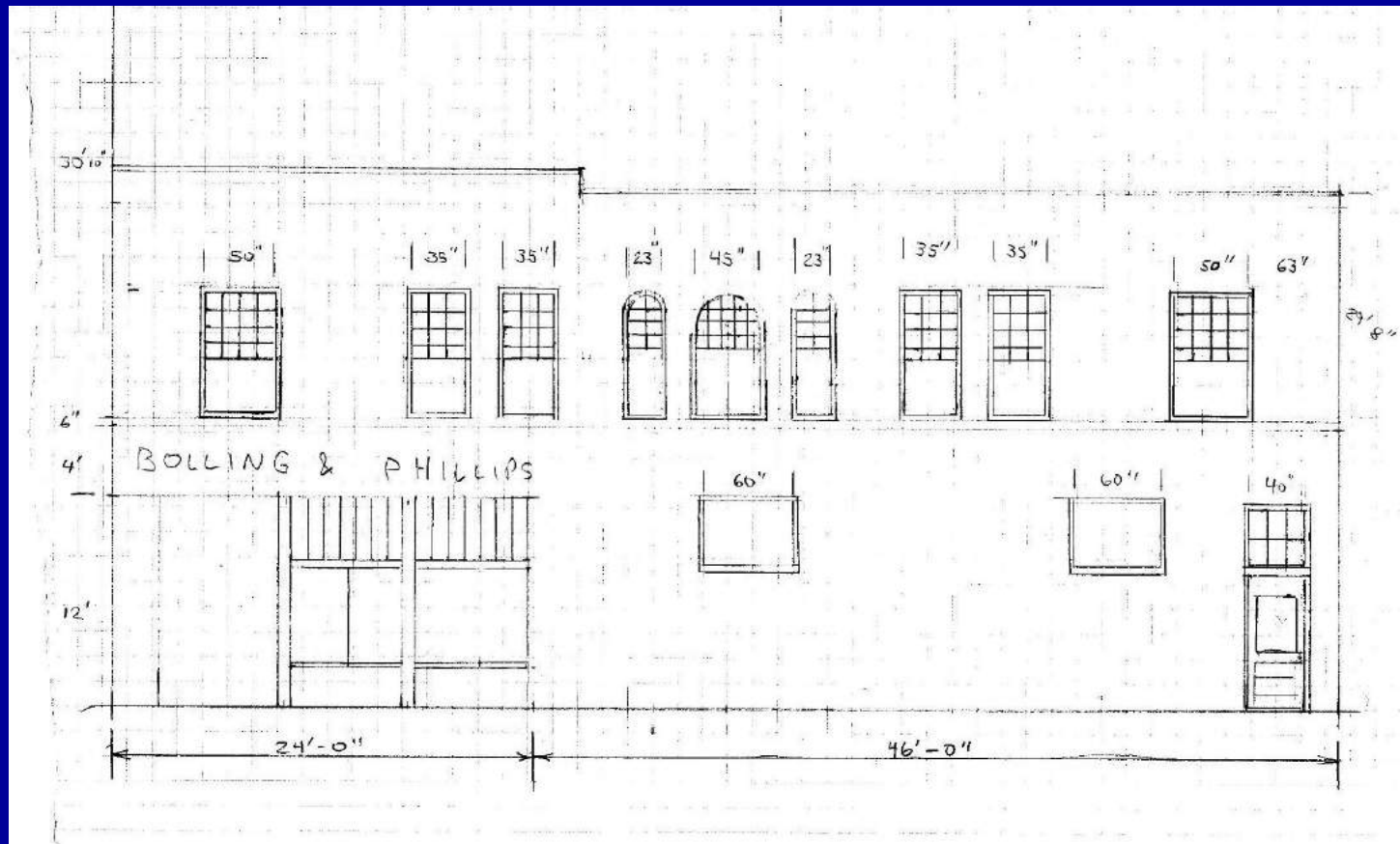
UP RR  
tracks



Originally an alley was behind the building. In the 70's the city quit using it and sold the land to the building owner.

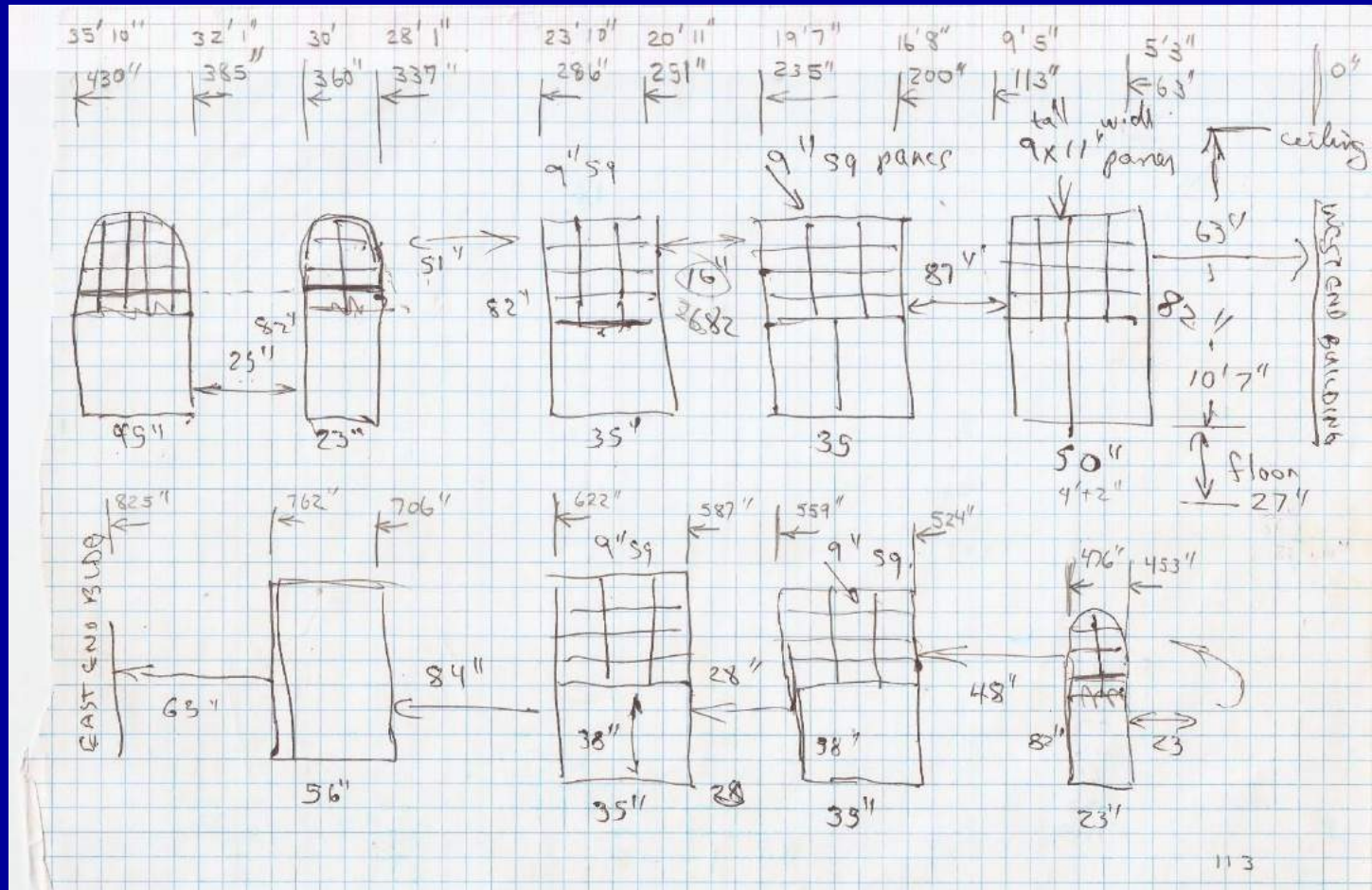
Jim Williams collection photo

# Dimensions from measurements north side – H0 scale

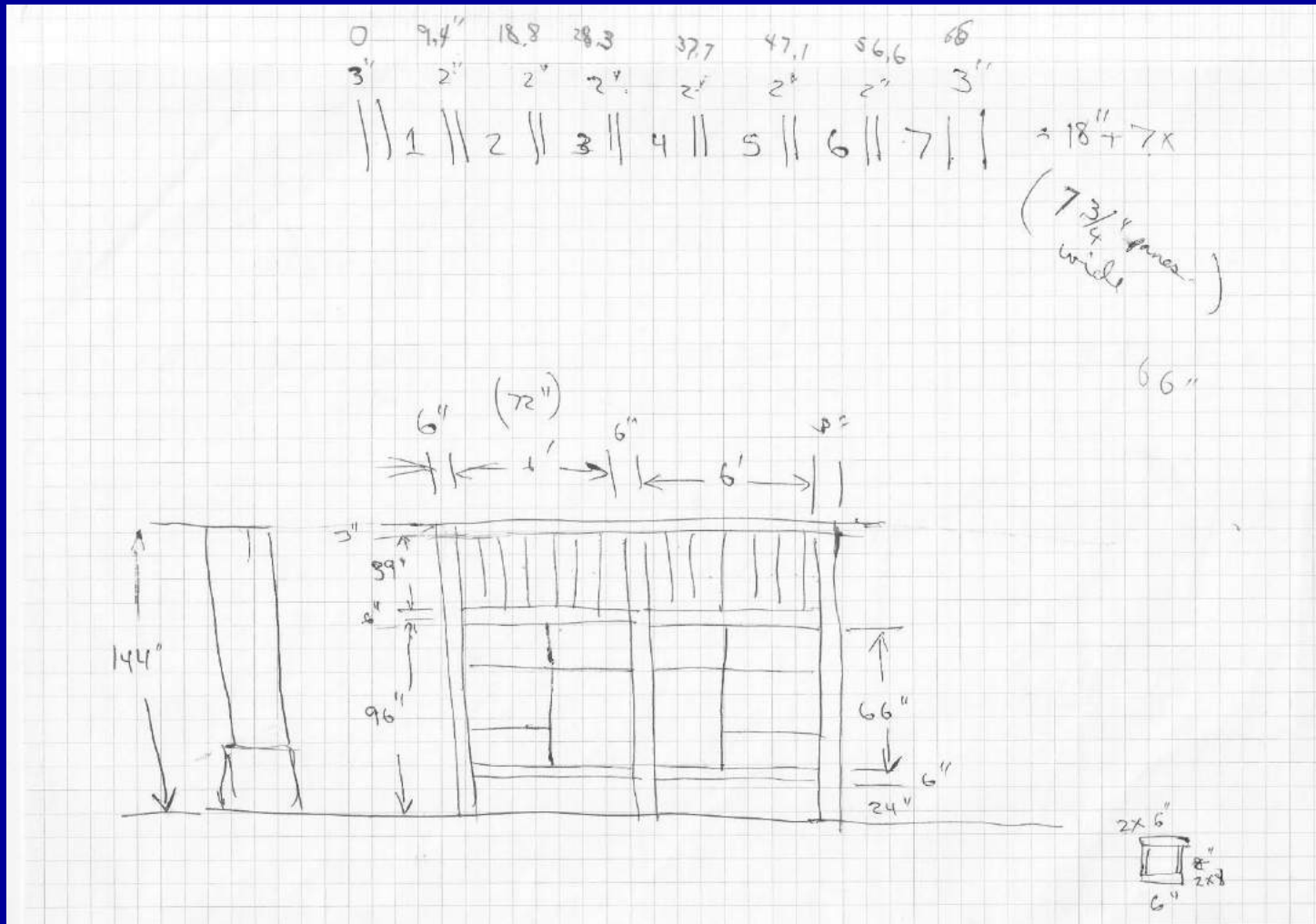




# Field notes - dimensions north side 2<sup>nd</sup> floor windows



# Field notes - dimensions north side 1<sup>st</sup> floor windows

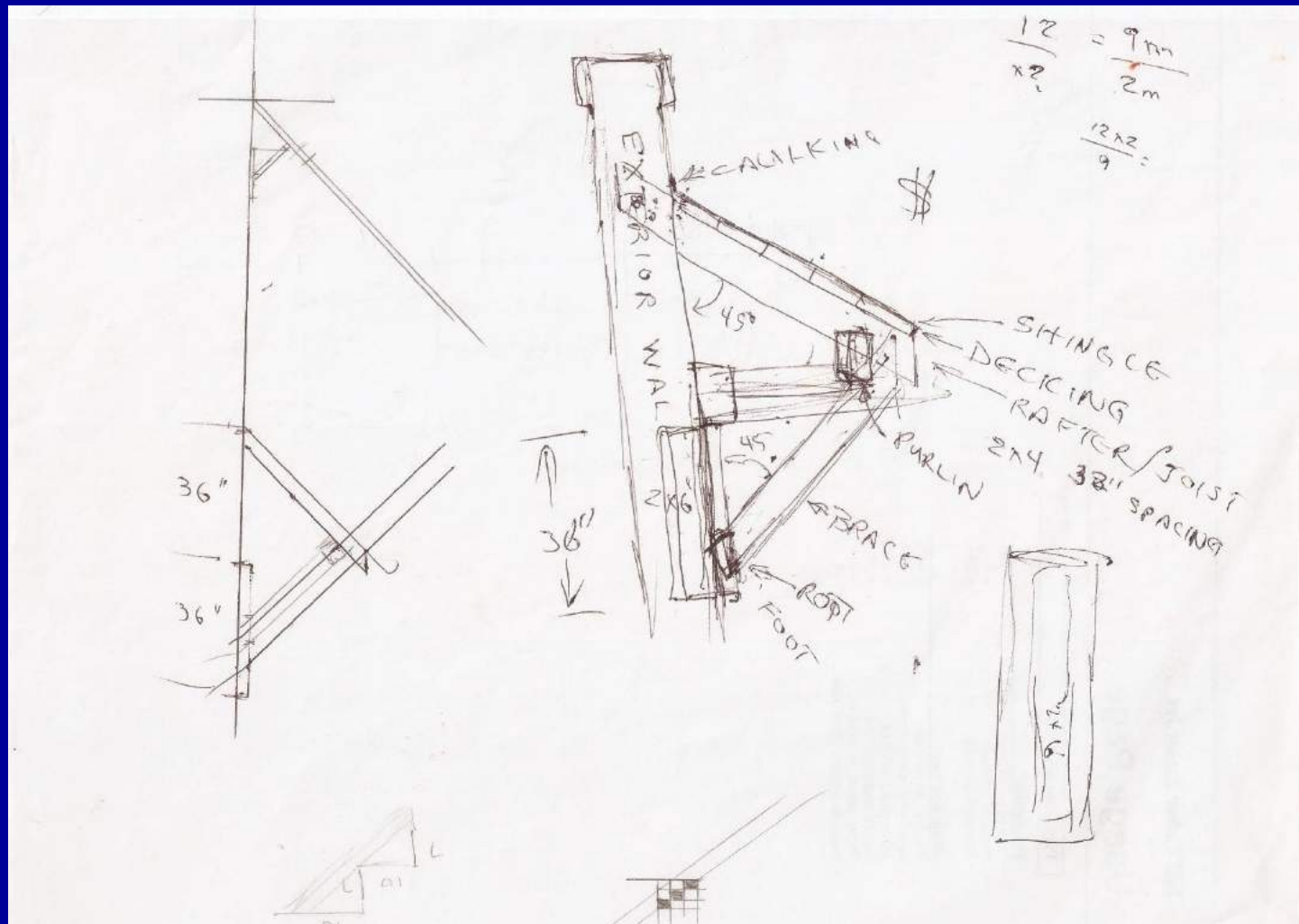








# And then there is that roof detail sketch





**The roof detail is gone**  
**The attachment points are visible**

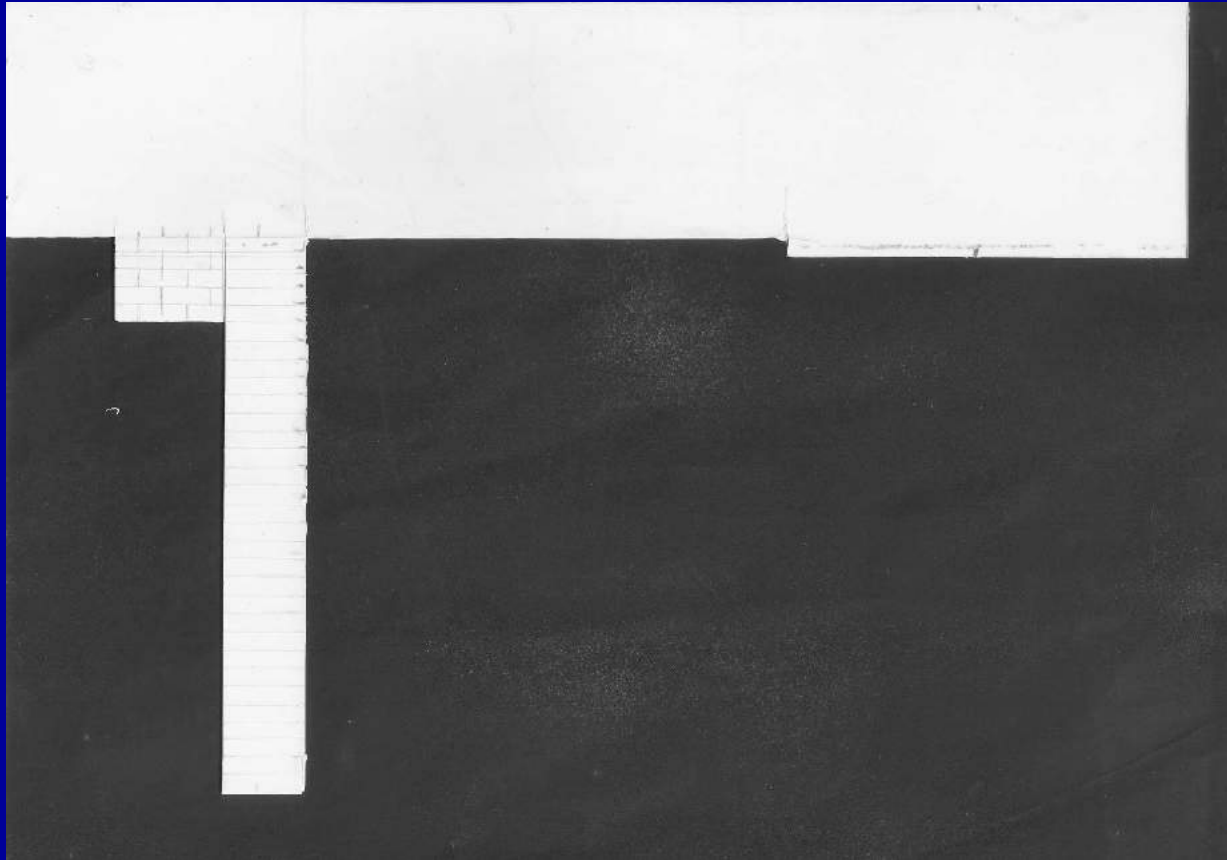


Jim Williams collection photo

# H0 scale model – exterior walls

**.040”  
styrene  
sheet**

**Used  
#11  
knife to  
scribe  
the 12”  
x 31”  
brick  
lines**



# H0 scale model – North side view

Upper floor is sheet styrene plastic with stucco finish

Lower floor is smooth styrene plastic sheet

Basswood base



Tichy window frames (gray plastic)

Tichy door



# Ho scale model – inside view



# Ho scale model – paint exterior



# Ho scale model – paint interior





# Ho scale model – building location



# Ho scale model – exterior details

LED street light



decals



LED rear door light



shell road





# Ho scale model – interior details

Office  
furniture

Masonic  
Lodge  
furniture



Hardware  
store  
merchandise

**The end – thank you!**

