

**HO BULK FUEL DISTRIBUTOR
BOB EVANS DBA
SINCLAIR FUEL
FREEPORT, TEXAS**

BY JIM WILLIAMS

THE MODELLING PROCESS

- 1. THE PROTOTYPE**
2. SCALE DRAWINGS
3. CONSTRUCTION
4. INSTALLATION
5. WEATHERING & FINAL DETAILS

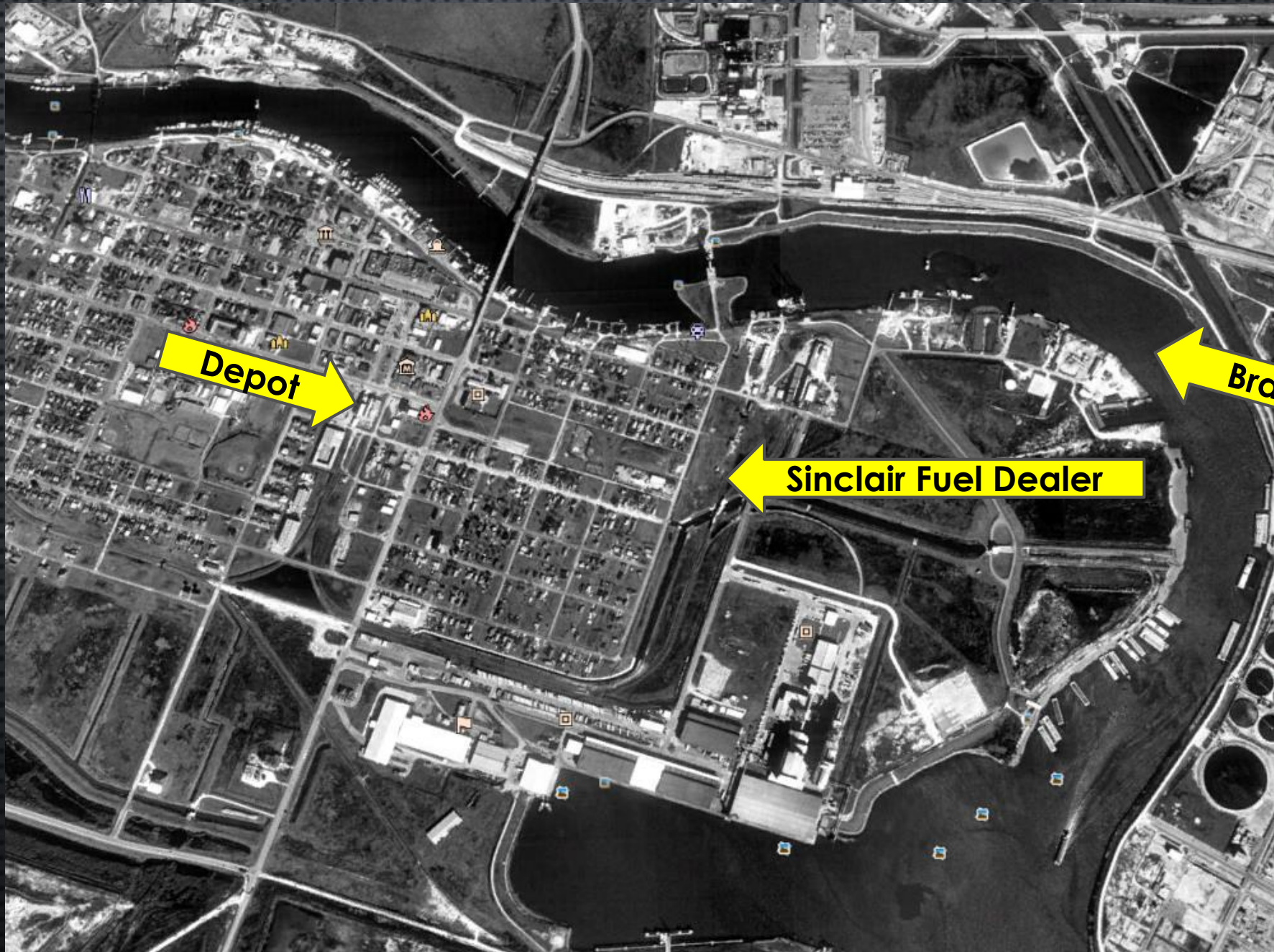


Freeport,
Texas

Photo from
Dan Kesner

Freeport,
Texas 1995 by
Google Earth

The fuel dealer
has been
removed by
the time this
photo was
taken.

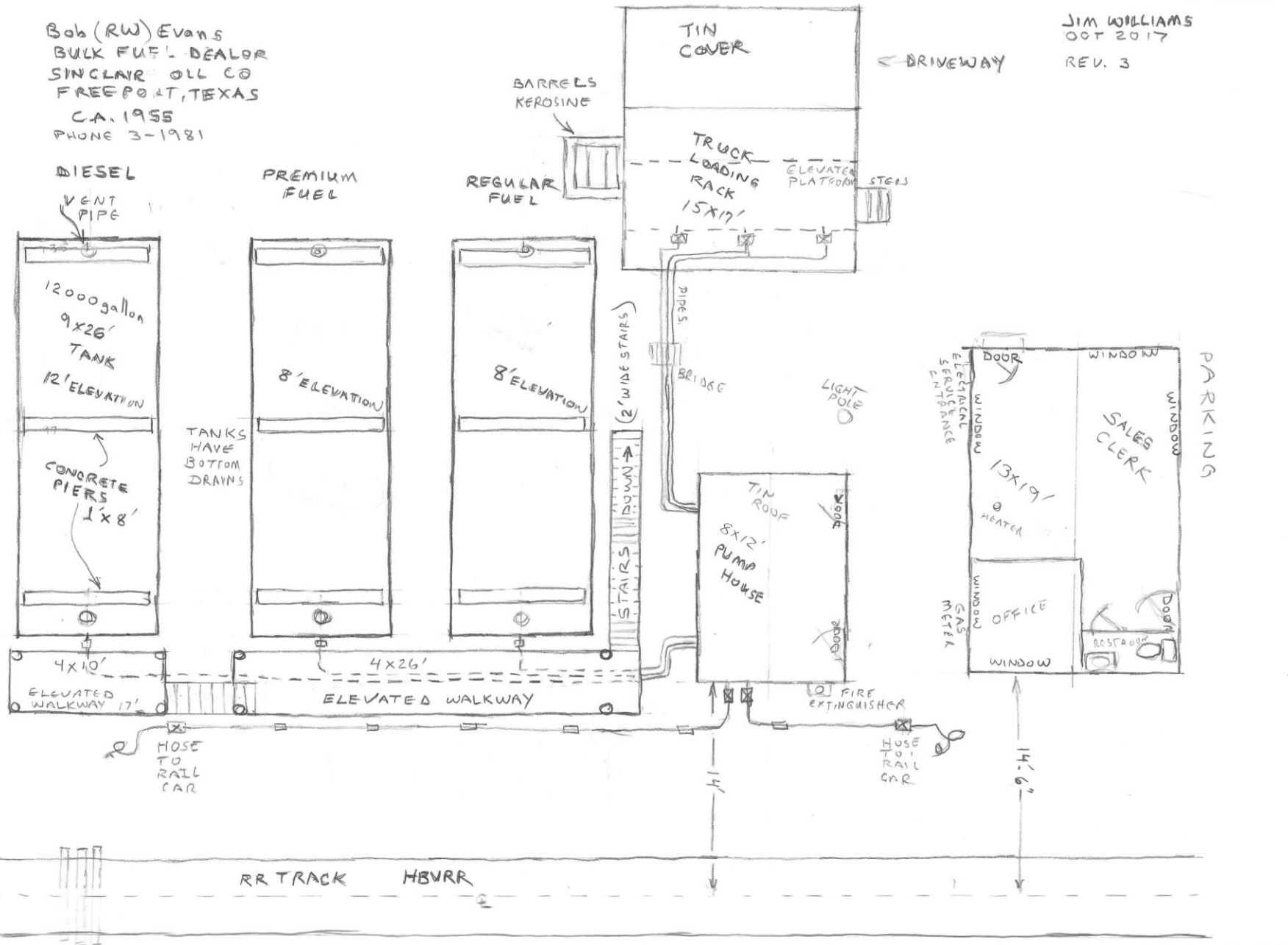


THE MODELLING PROCESS

1. THE PROTOTYPE
- 2. SCALE DRAWINGS**
3. CONSTRUCTION
4. INSTALLATION
5. WEATHERING & FINAL DETAILS

Bob (RW) Evans
BULK FUEL DEALER
SINCLAIR OIL CO
FREEPORT, TEXAS
C.A. 1955
PHONE 3-1981

JIM WILLIAMS
OCT 2017
REV. 3



As built drawing shown at right. The original drawing is missing.

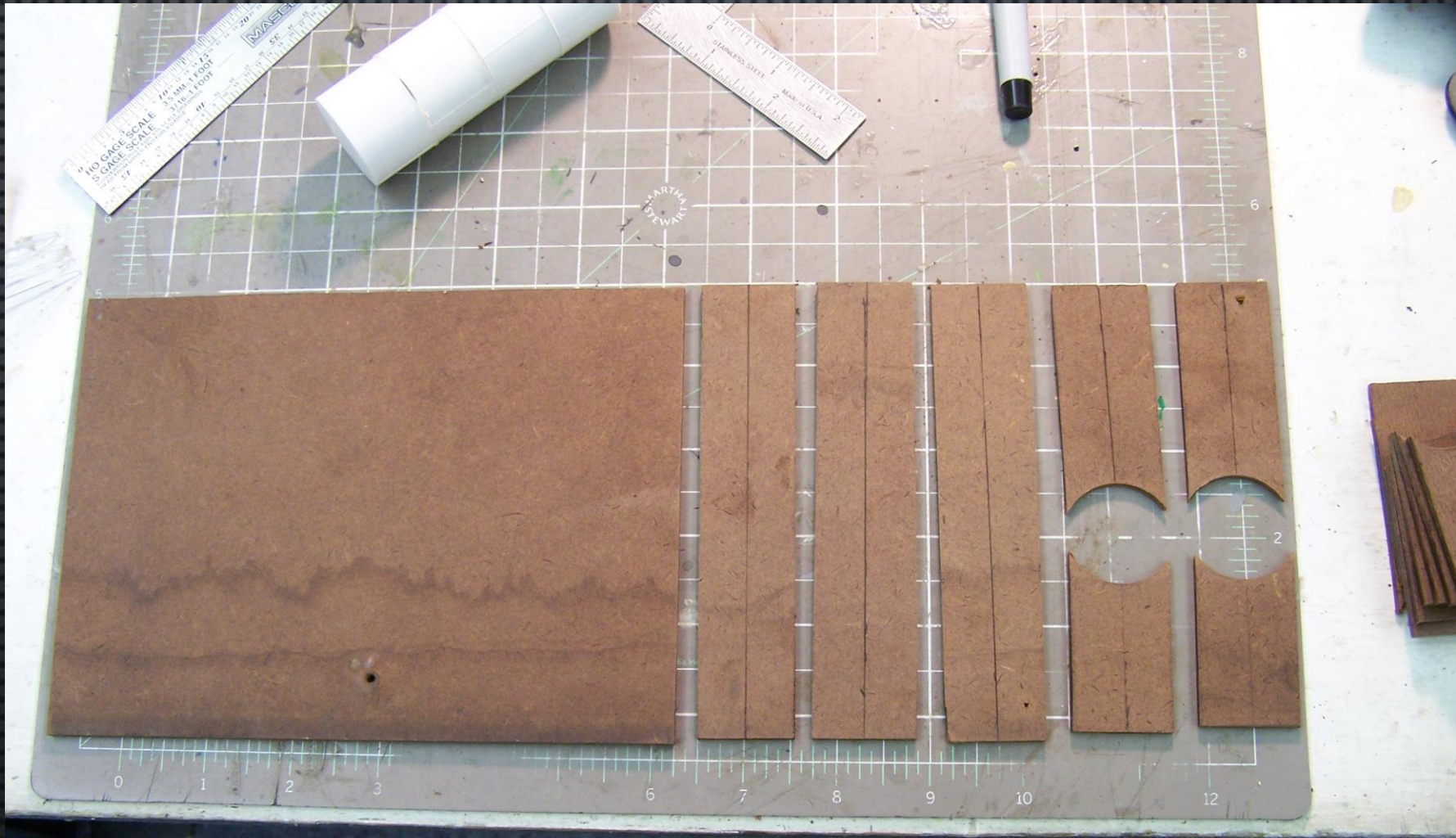
THE MODELLING PROCESS

1. THE PROTOTYPE
2. SCALE DRAWINGS
- 3. CONSTRUCTION**
4. INSTALLATION
5. WEATHERING & FINAL DETAILS

**Building
horizontal tank
supports out of
1/8" Masonite.**

**There are
three
horizontal
tanks, two are
8' above
ground, and
one is 12'
high.**

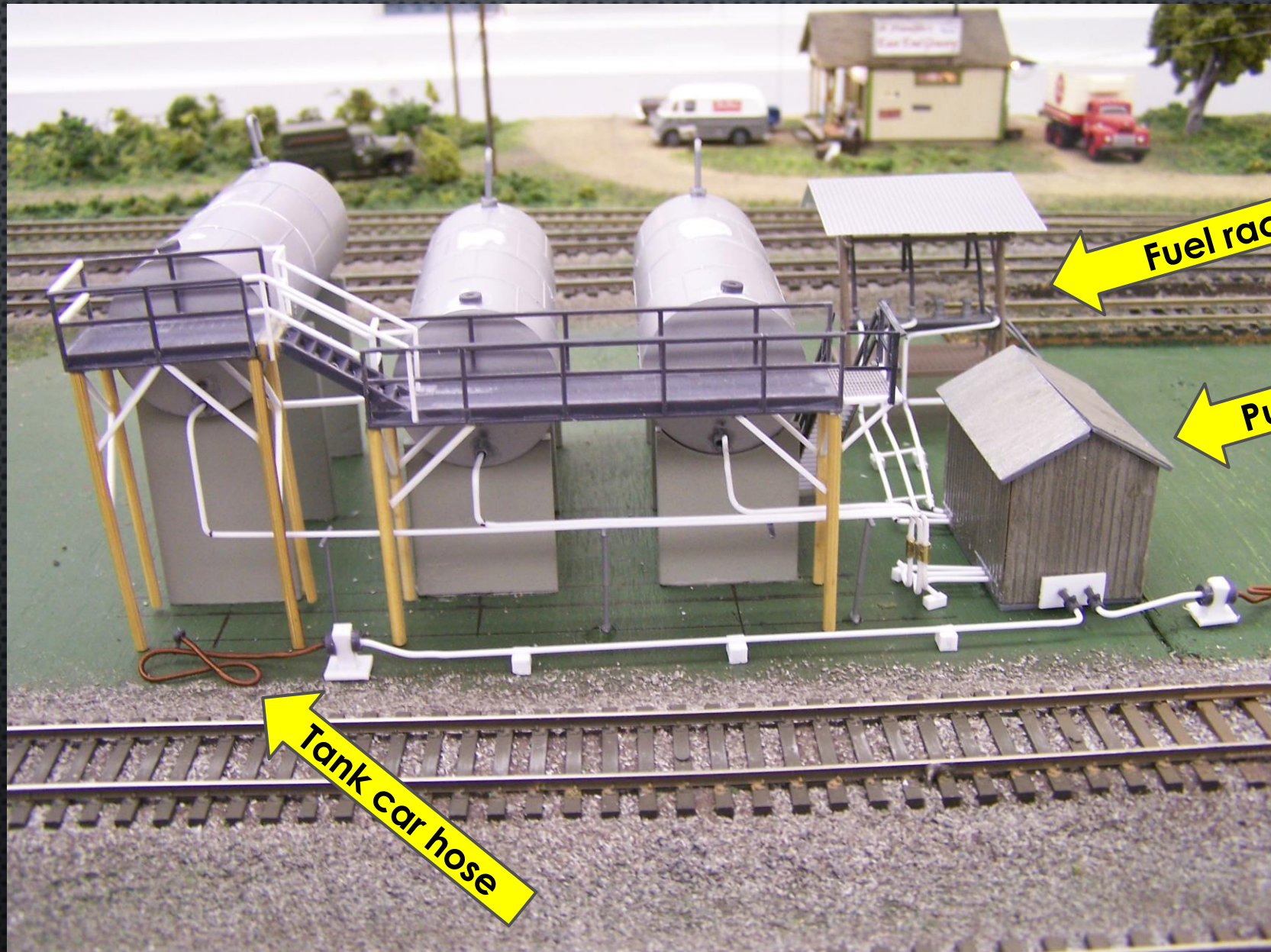
**A Forstner bit
was used to
create the
saddle.**



Tanks are from
Walthers kits
as well as the
walkways,
handrails and
truck loading
shelter.

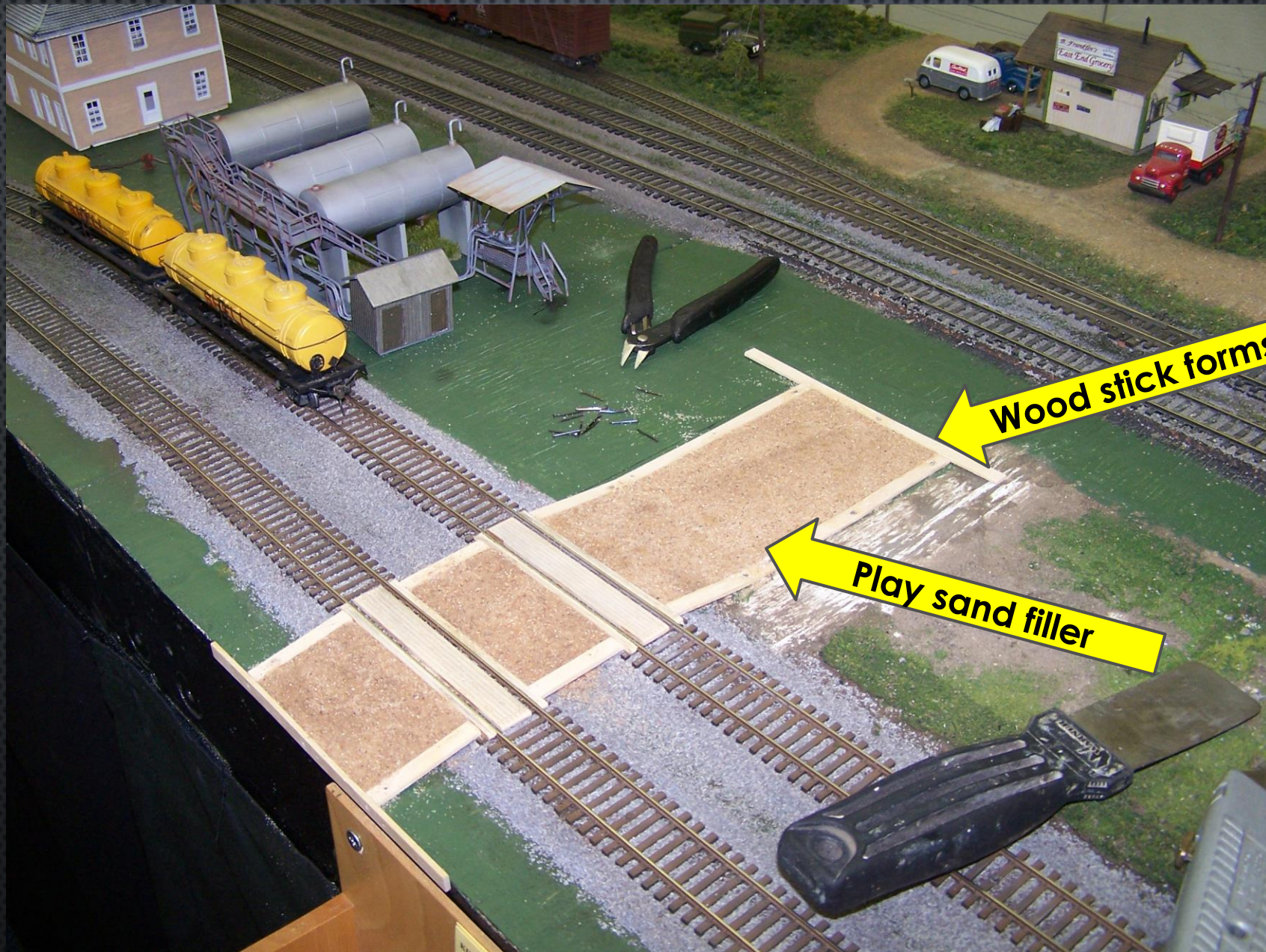
The white fuel
lines are .020"
styrene rod
bent to shape.

Some hand
rails were
scratch built.



Beginnings of
access road
across RR
tracks.

Blair Line
wood grade
crossings was
used.



Wood stick forms

Play sand filler

Second
portion of
access road.

Add parking
area and
truck loading
area.

Once the glue
has dried the
road surface is
sanded
smooth.



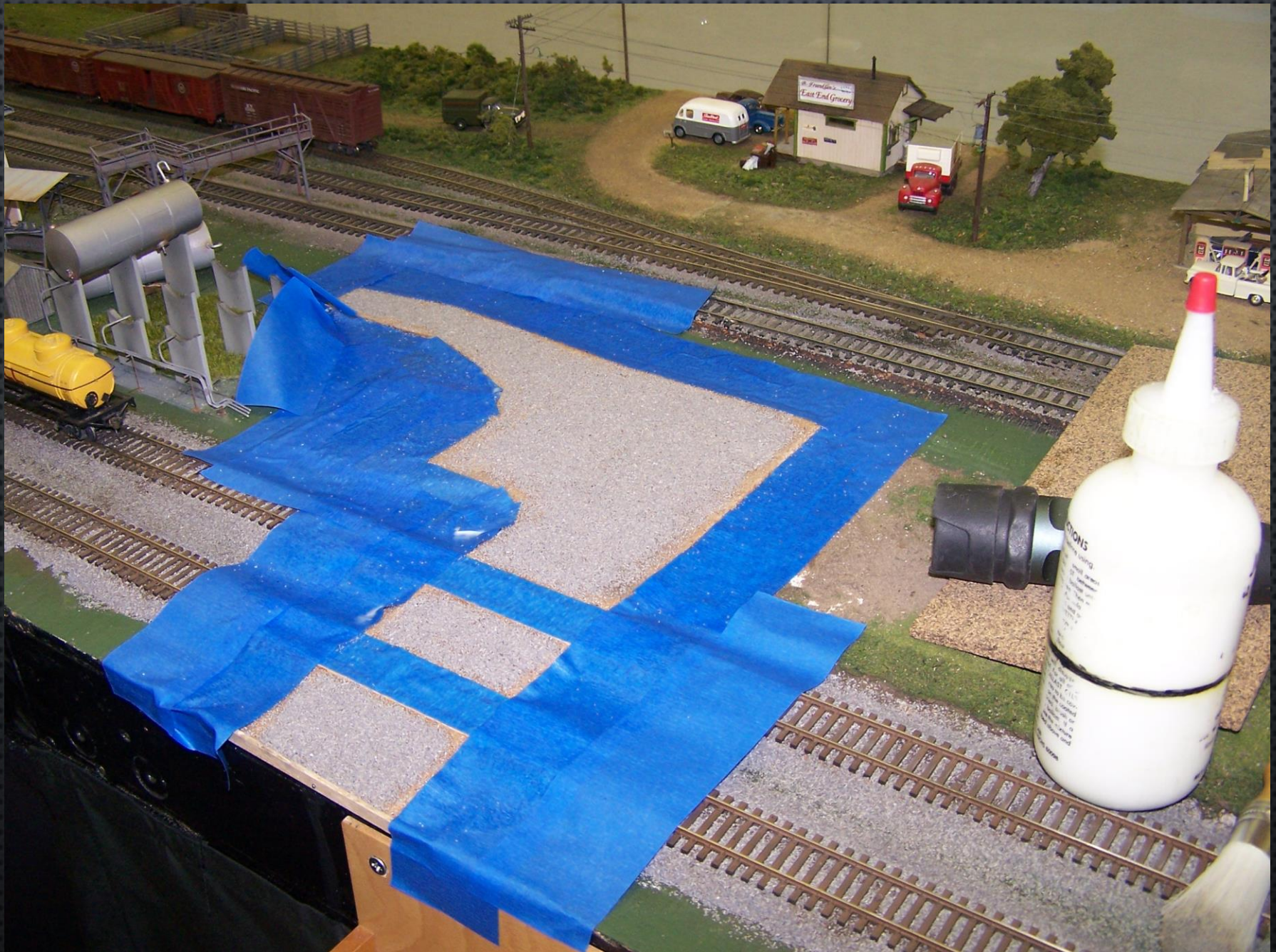
**Adding
sloping fill
between table
and road.**

**Blue tape is
used to keep
alcohol over
spray from
previous work.**



Adding thin layer of gray blend ballast to simulate sea shell road surface.

The flashlight is use to check flatness of road.



Beginning to add grasses and other vegetation.

Some weathering has been done to road surface and grade crossing timbers.



THE MODELLING PROCESS

1. THE PROTOTYPE
2. SCALE DRAWINGS
3. CONSTRUCTION
- 4. INSTALLATION**
5. WEATHERING & FINAL DETAILS

Continue
with
additional
landscape
adjacent to
railroad
tracks.

Glue
structures &
tanks in
place.



THE MODELLING PROCESS

1. THE PROTOTYPE
2. SCALE DRAWINGS
3. CONSTRUCTION
4. INSTALLATION
- 5. WEATHERING & FINAL DETAILS**

Another view of nearly completed scene.

There are five LED lights.

The clerks office building has been added.



More weeds
have been
added to
scenery.

Also a fire
extinguisher
and a gas
meter were
added.



THE END