

**HO SCALE
BULK OIL DISTRIBUTOR
TEXAS COMPANY
FREEPORT, TEXAS**

BY JIM WILLIAMS

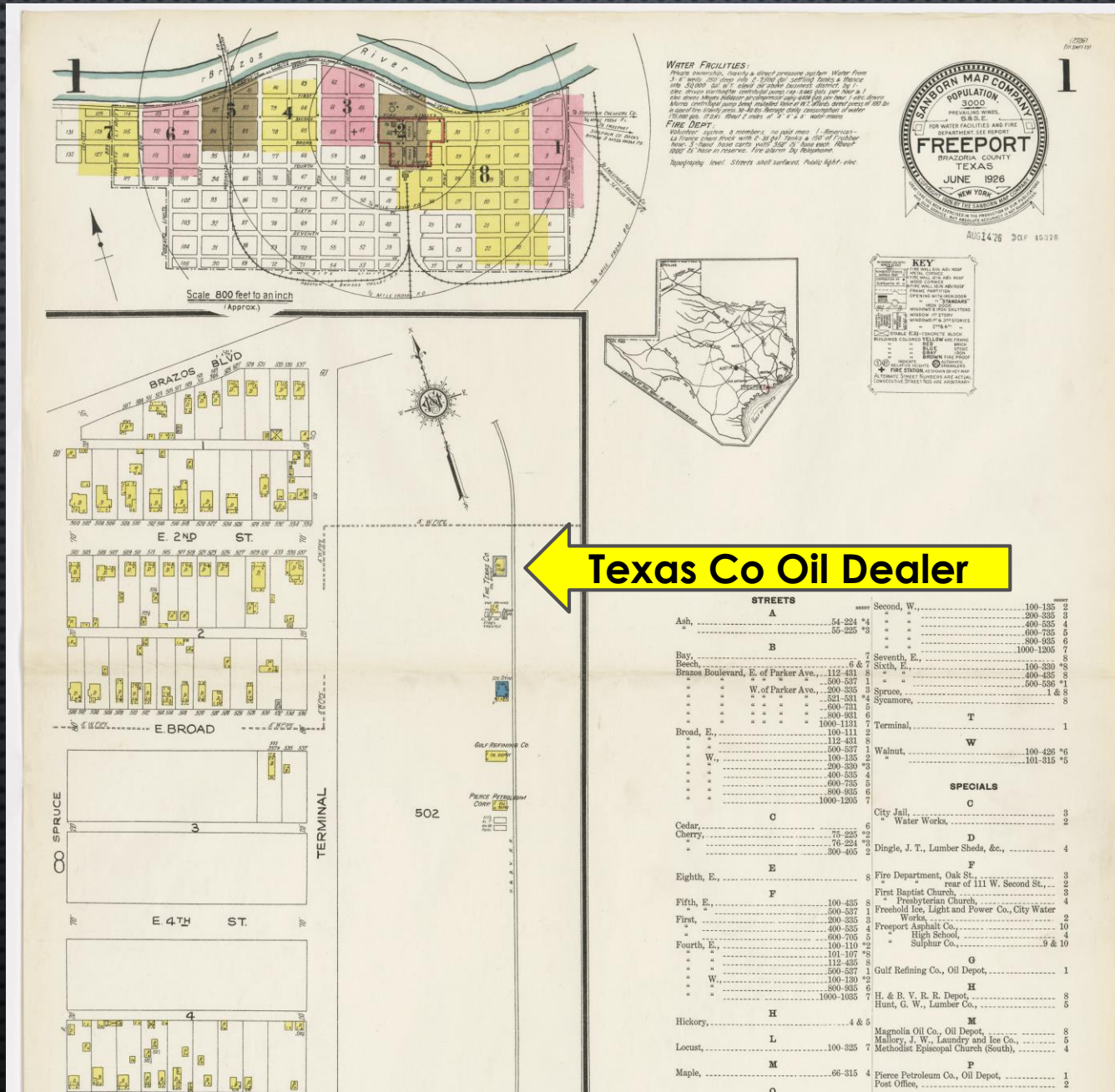
THE MODELLING PROCESS

- 1. THE PROTOTYPE**
2. SCALE DRAWINGS
3. CONSTRUCTION
4. INSTALLATION
5. WEATHERING & FINAL DETAILS

Freeport, Texas 1926 by Sanborn Map Company.

The oil dealer was the Texas Co. when this map was created.

The Texas Co was renamed Texaco in 1939.



Freeport,
Texas

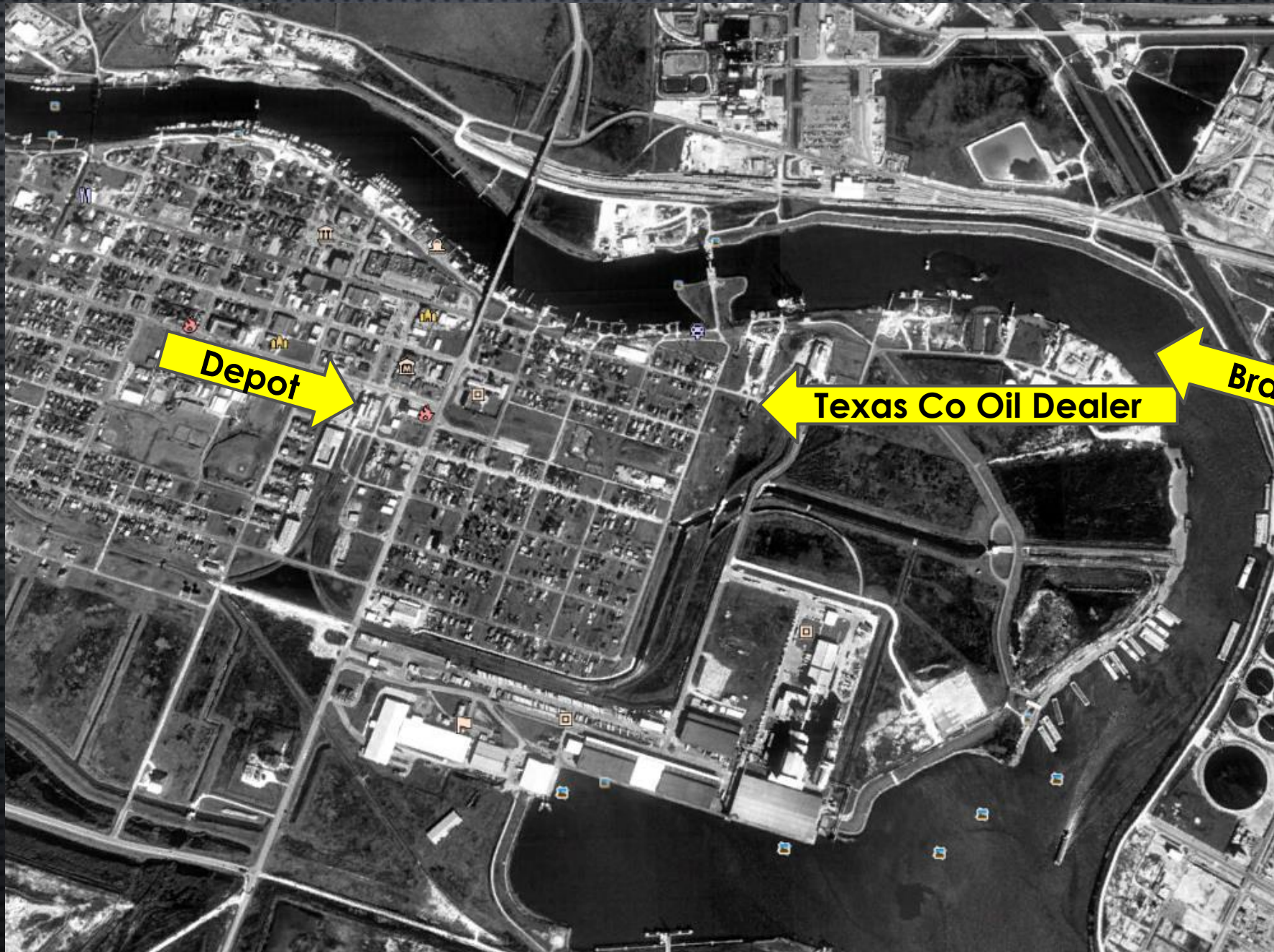
The oil dealer
had two
vertical tanks
barely visible
in the photo.

Photo from
Dan Kesner



Freeport,
Texas 1995 by
Google Earth

The fuel dealer
has been
removed by
the time this
photo was
taken.

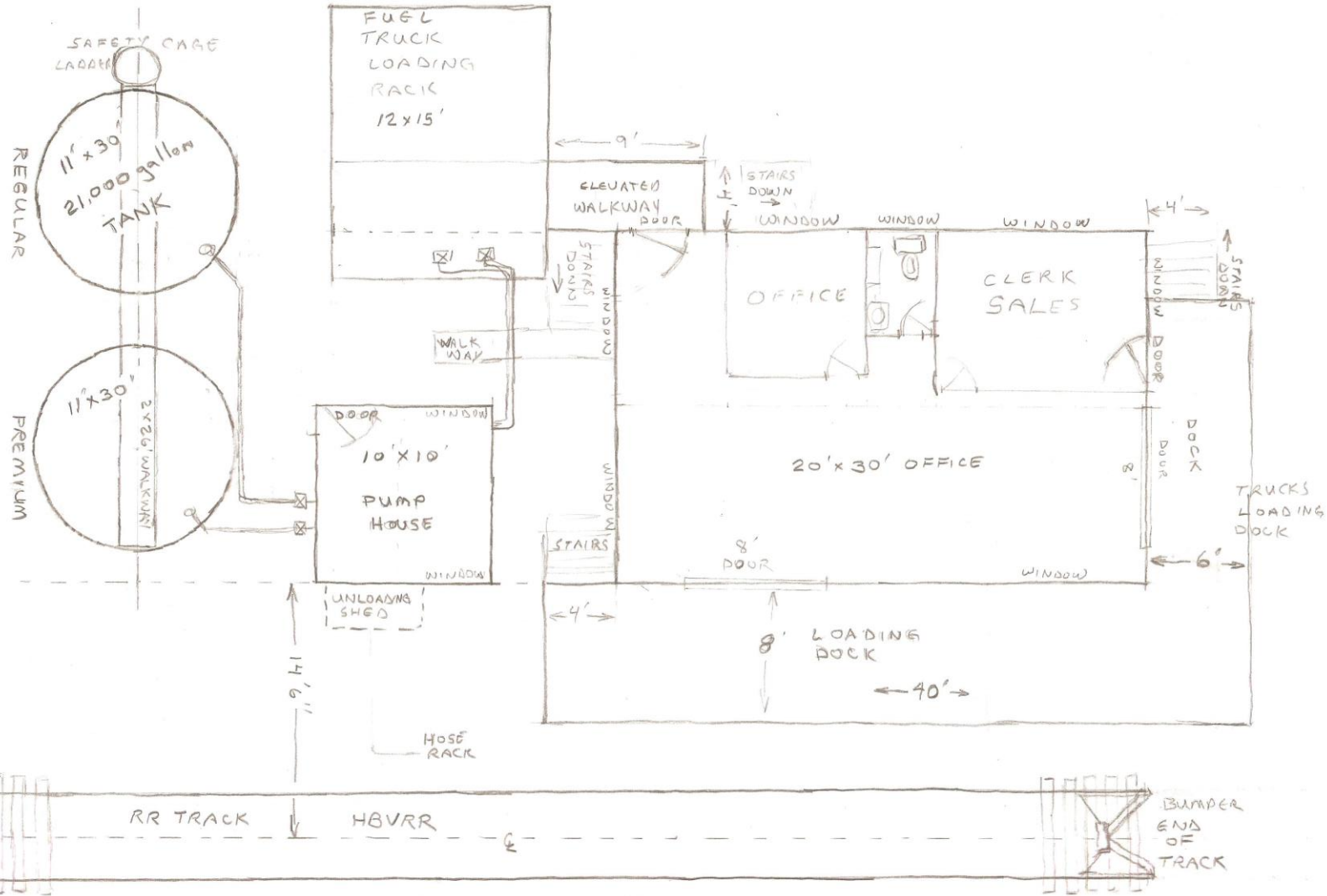


THE MODELLING PROCESS

1. THE PROTOTYPE
- 2. SCALE DRAWINGS**
3. CONSTRUCTION
4. INSTALLATION
5. WEATHERING & FINAL DETAILS

TEXAS CONSIGNEE DISTRIBUTOR
MAGNOLIA OIL
629 E 2nd ...
FREEPORT, TX
PHONE 3-2291

JIM WILLIAMS
JAN 2018
REV. 2.1
HO SCALE



HO scale drawing of the major components of the Texas Company consignee bulk oil dealer.

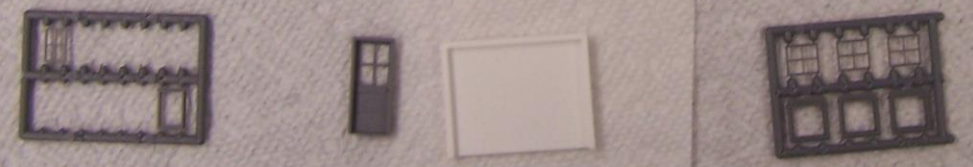
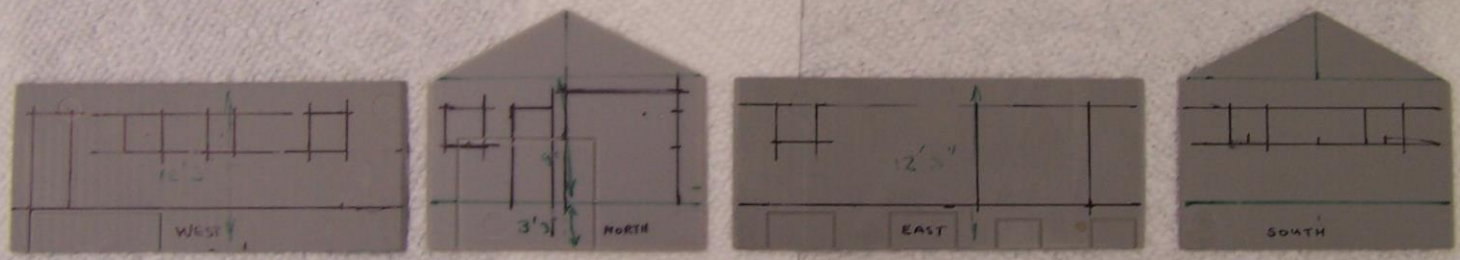
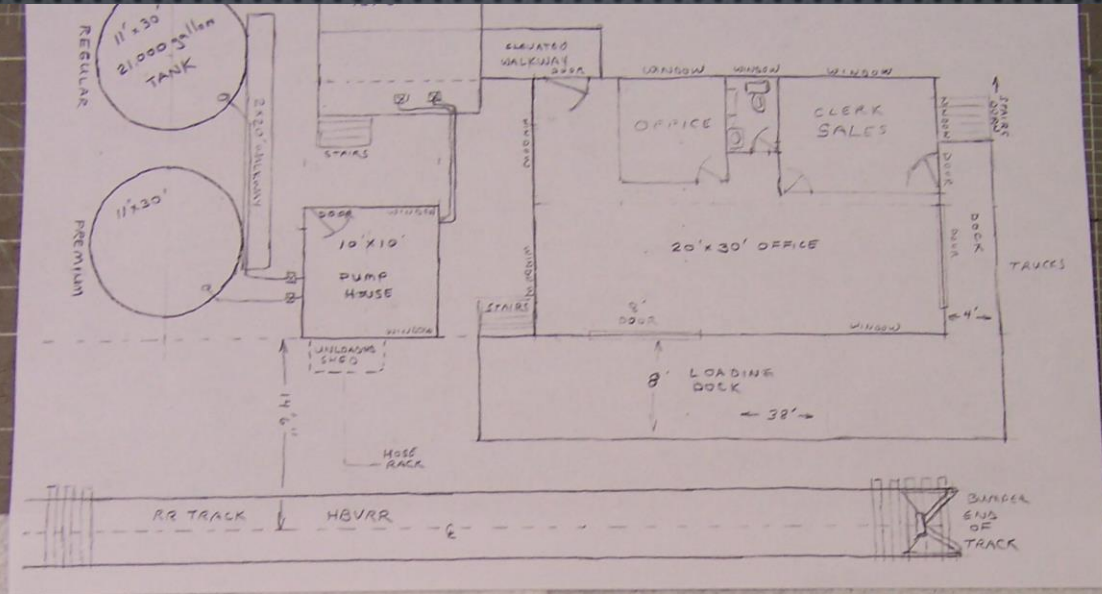
THE MODELLING PROCESS

1. THE PROTOTYPE
2. SCALE DRAWINGS
- 3. CONSTRUCTION**
4. INSTALLATION
5. WEATHERING & FINAL DETAILS

Cut out wall panels for the building.

From the plan view drawing mark the locations of doors and windows.

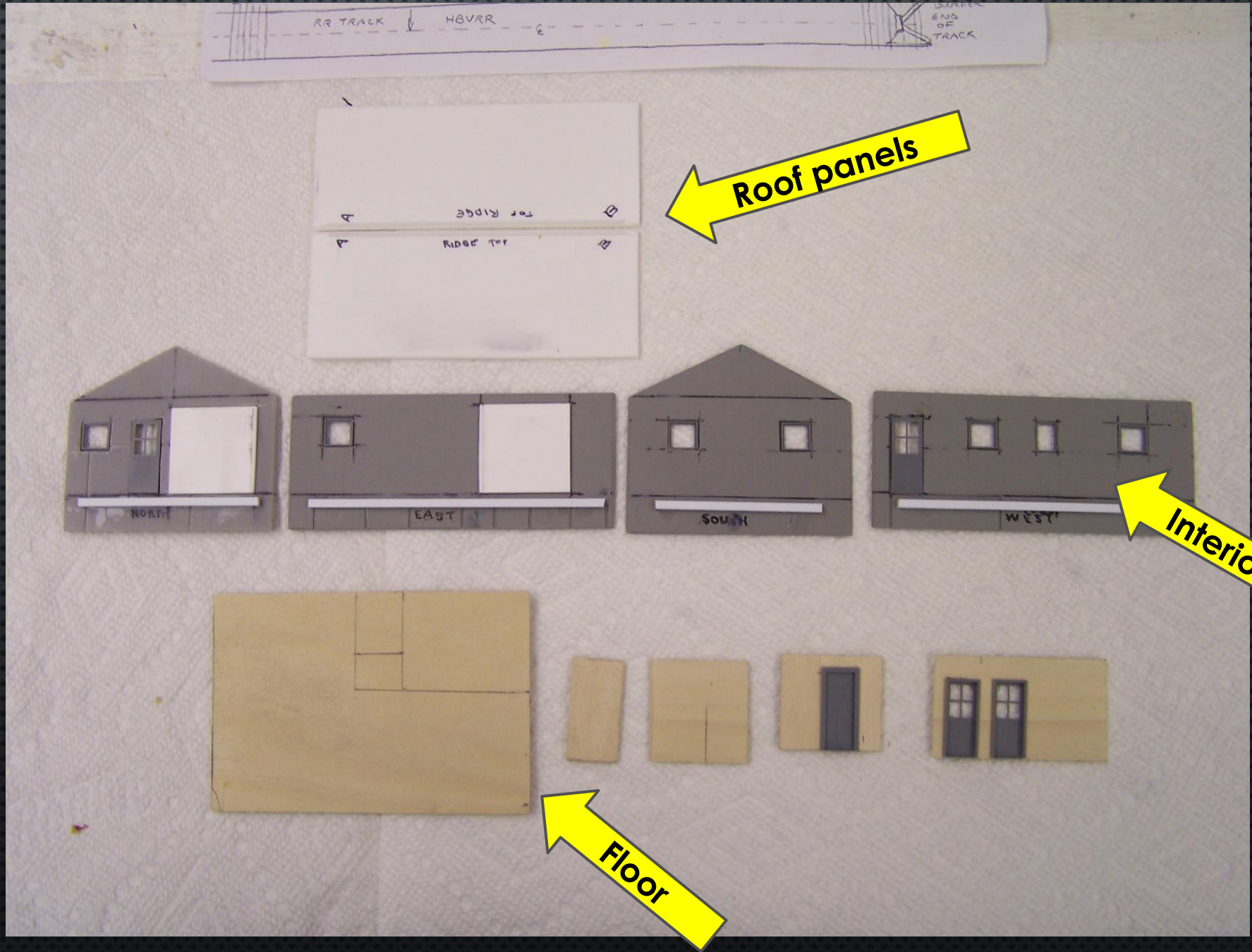
Gather up doors and windows to use.



Cut openings for doors and windows in the exterior and interior walls.

The floor and interior walls were made from basswood.

On the interior side of the exterior walls a ledger board is added for the floor.



Painted inside
of office,
closet and
restroom walls
white.

Painted floor a
dark pine
color.

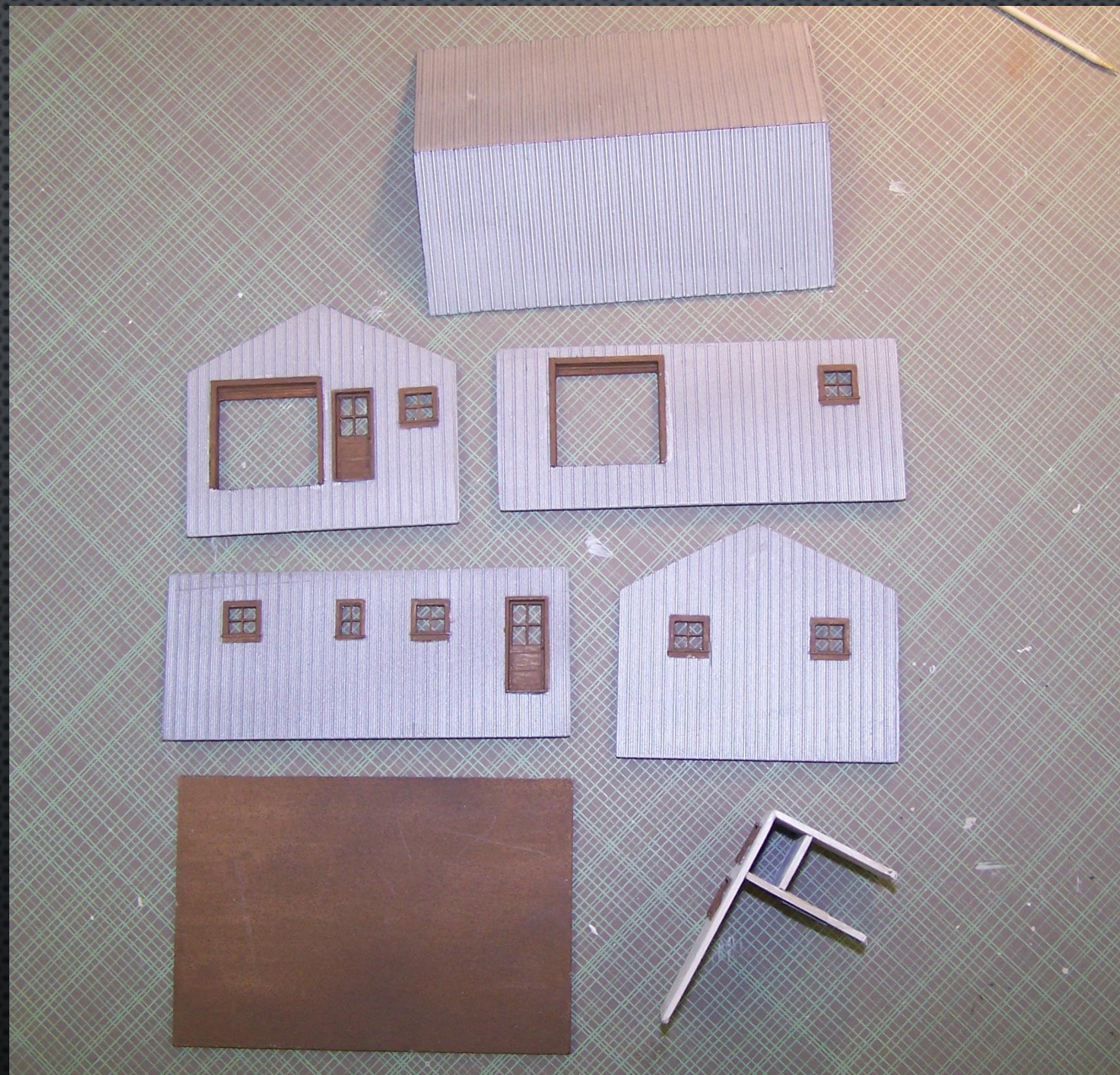
Painted inside
of freight room
a light grey.

Painted roof a
galvanized tin
color.

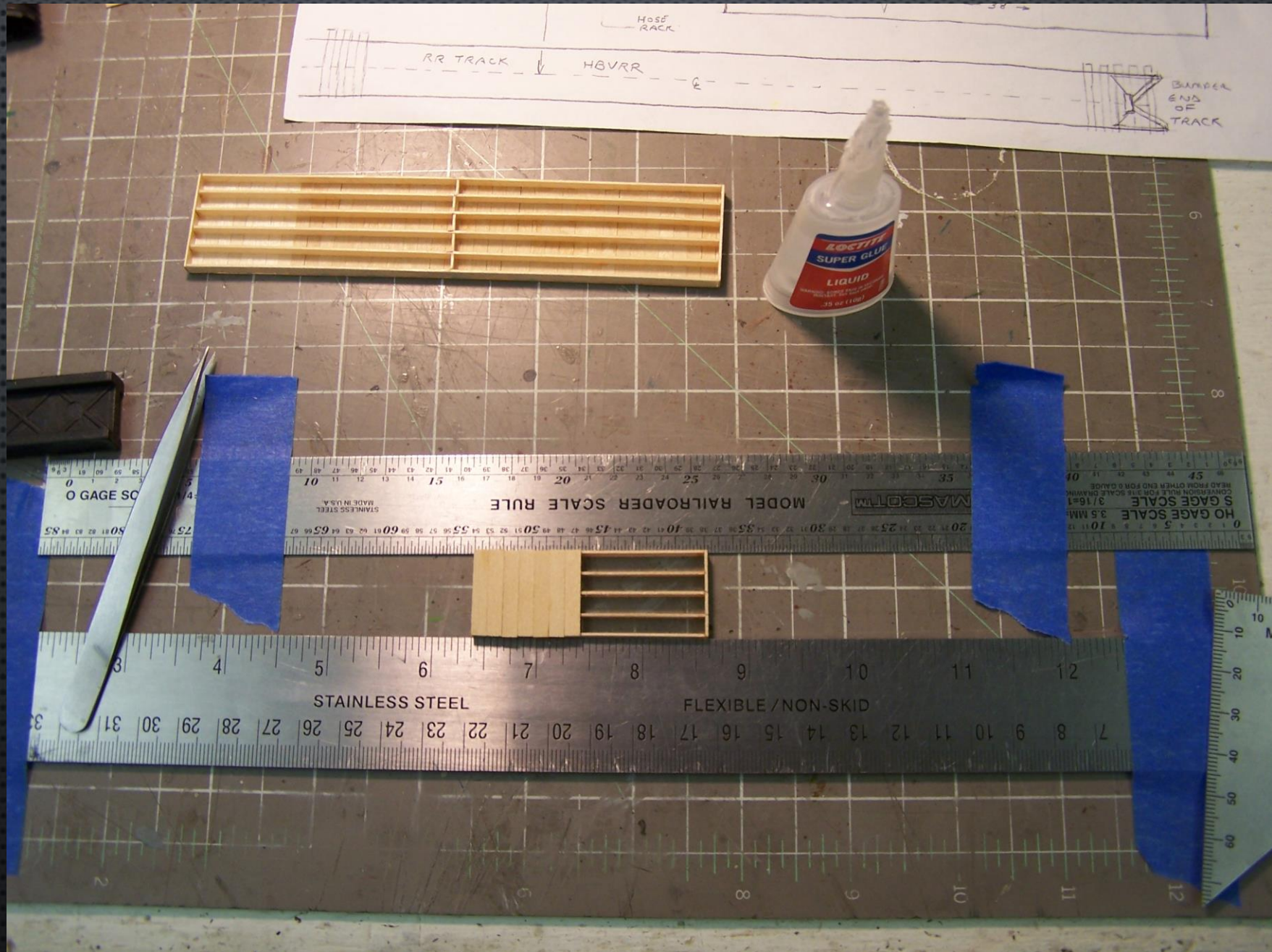


Exterior walls were painted a galvanized tin color.

The freight doors were cut open leaving only a couple of panels at the top.



Constructing the trackside loading dock using dimensional lumber, 2x10's and 2x12's.



The exterior walls were glued together. 8x8 posts were glued under the building.

The trackside loading dock was made from 2x10 boards, 8x8 posts, and 2x12 deck boards.



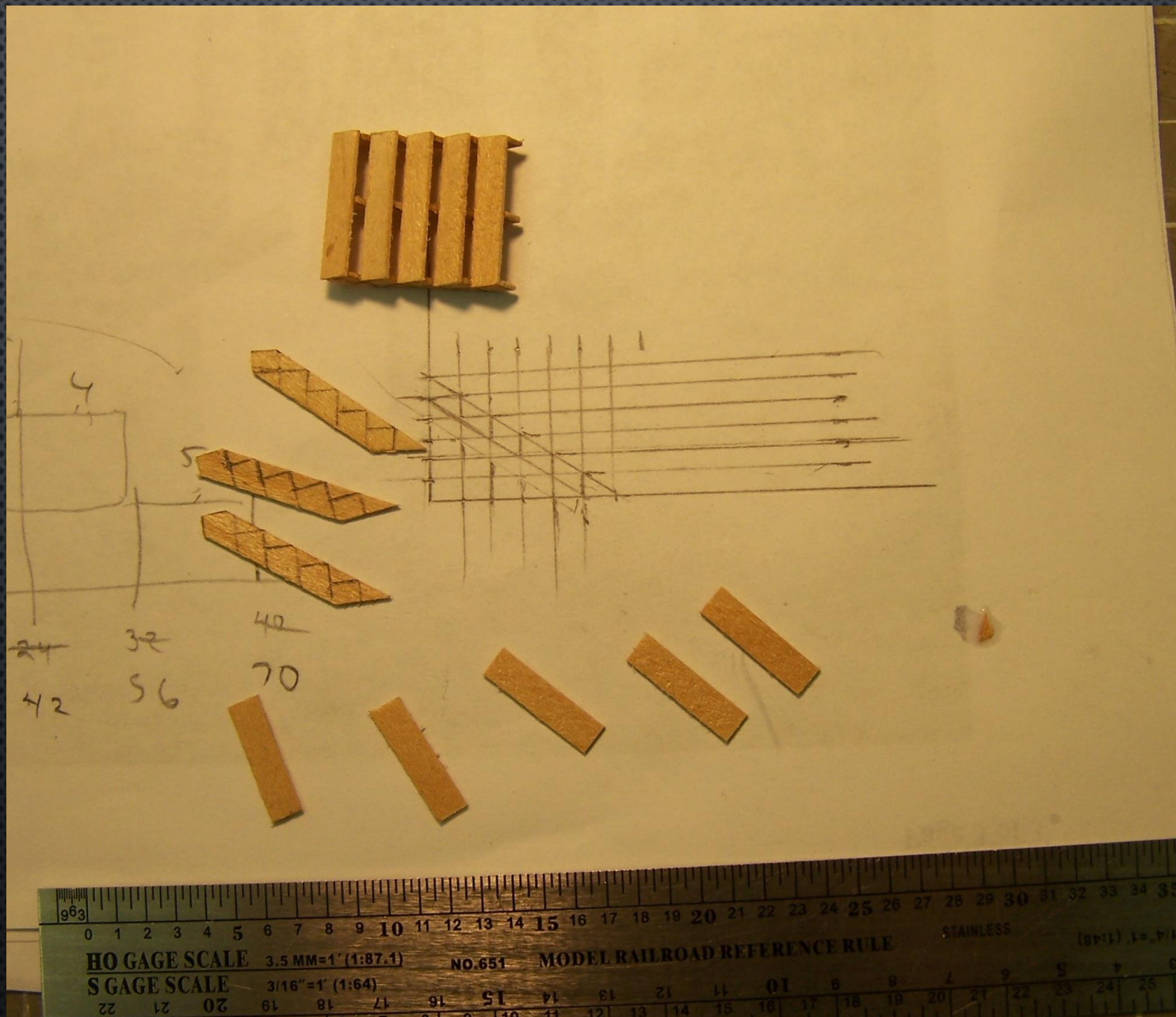
0.075
0.090

HO GAGE SCALE 3.5 MM=1' (1:87.1)
S GAGE SCALE 3/16"=1' (1:64)
NO. 657 MODEL RAILROAD REFERENCE RULE
GAGE SCALE 1/4"=1' (1:48)

Constructing
4 foot wide
steps from
2x12's.

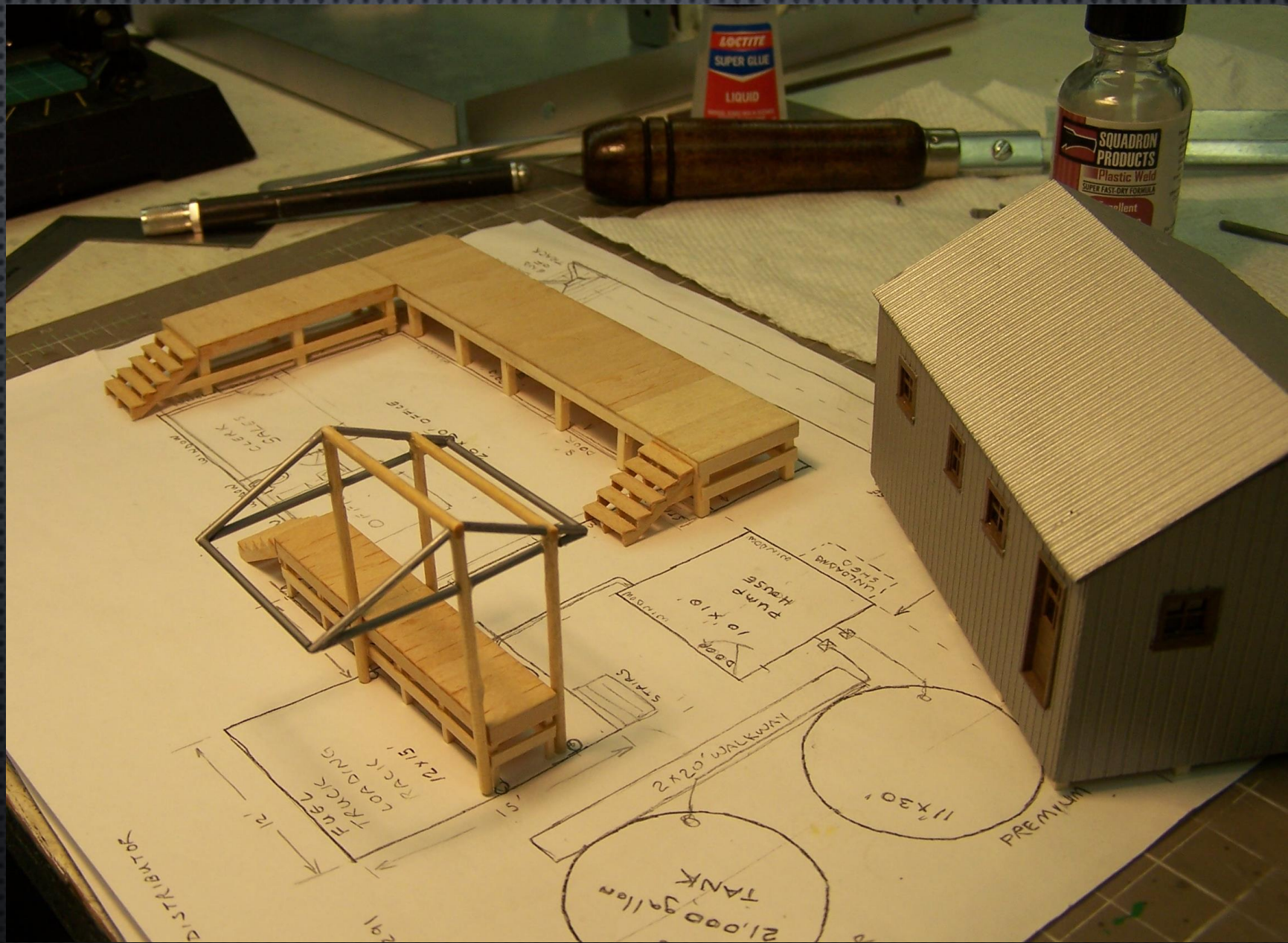
The grid is
8x12 squares
for marking
the cuts for
the steps.

Four stairs
are needed.



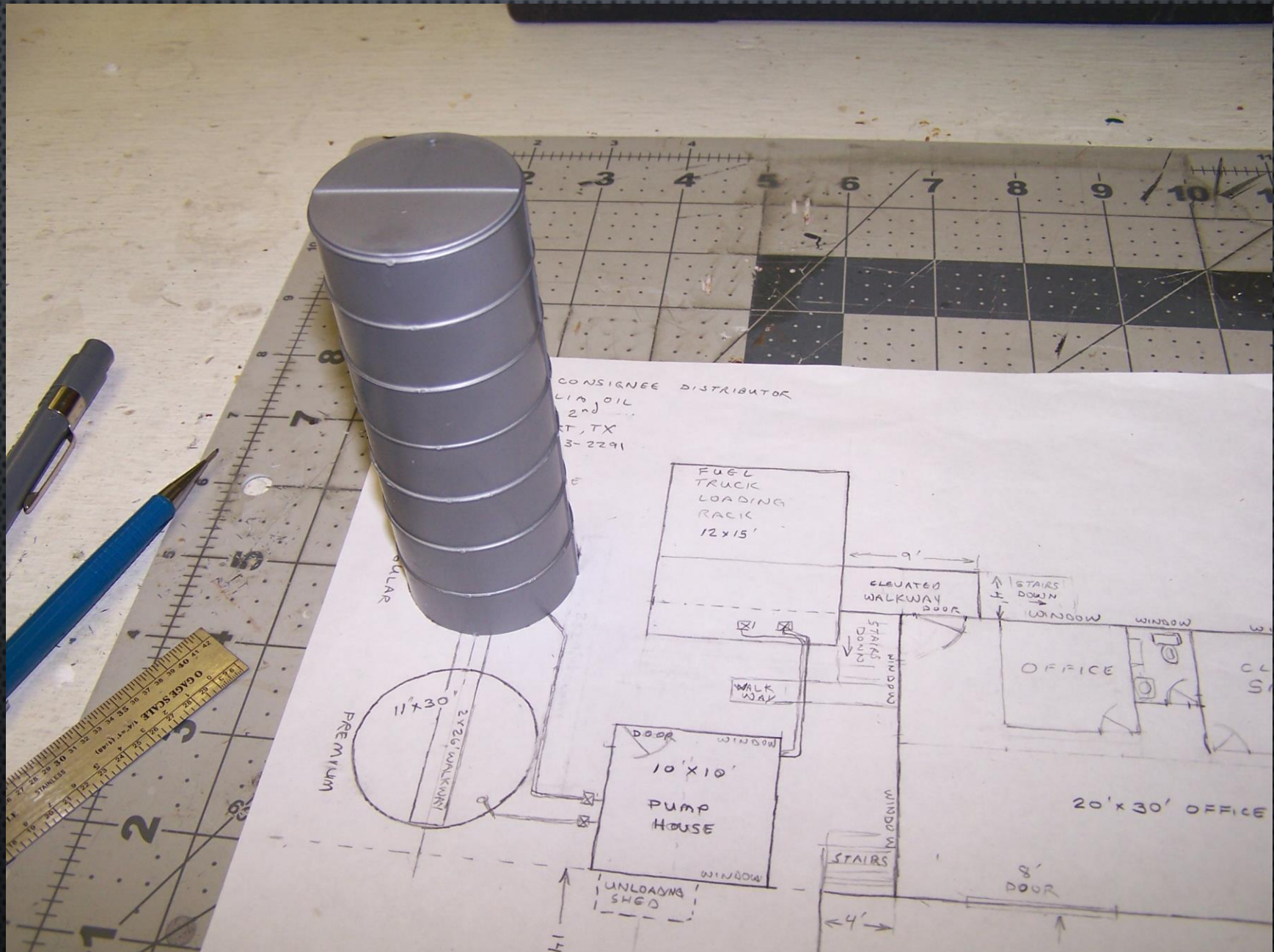
The loading rack is made from 8" wood columns, and 6" plastic canopy frame.

The frame straddles the platform.

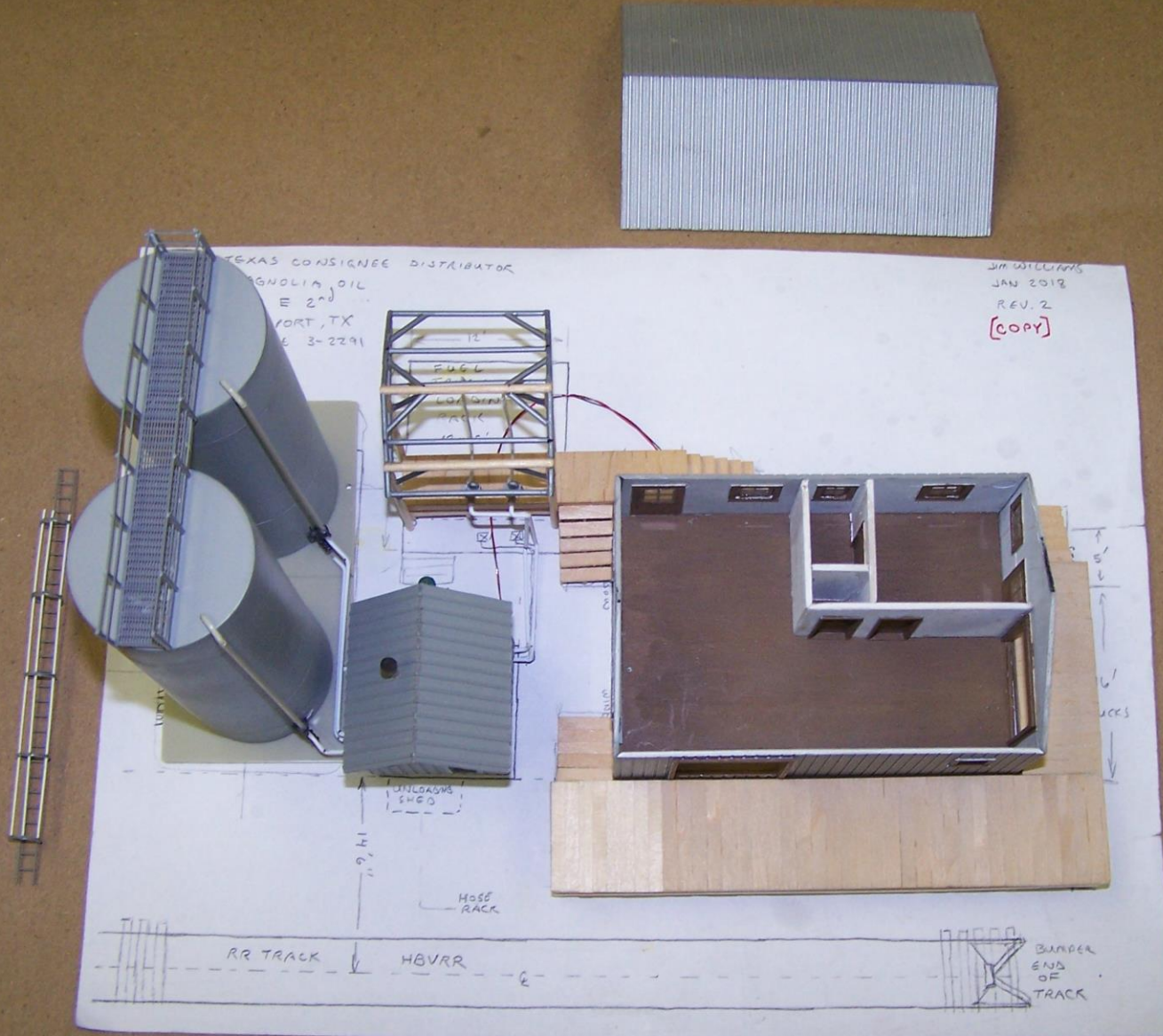


The two vertical storage tanks were made from a stack of rings from a Walthers oil dealer kit.

The seams were removed before painting.



The major components are positioned so that the piping between them can be constructed.



The two 31,000 gallon storage tanks were assembled from plastic ring sections.

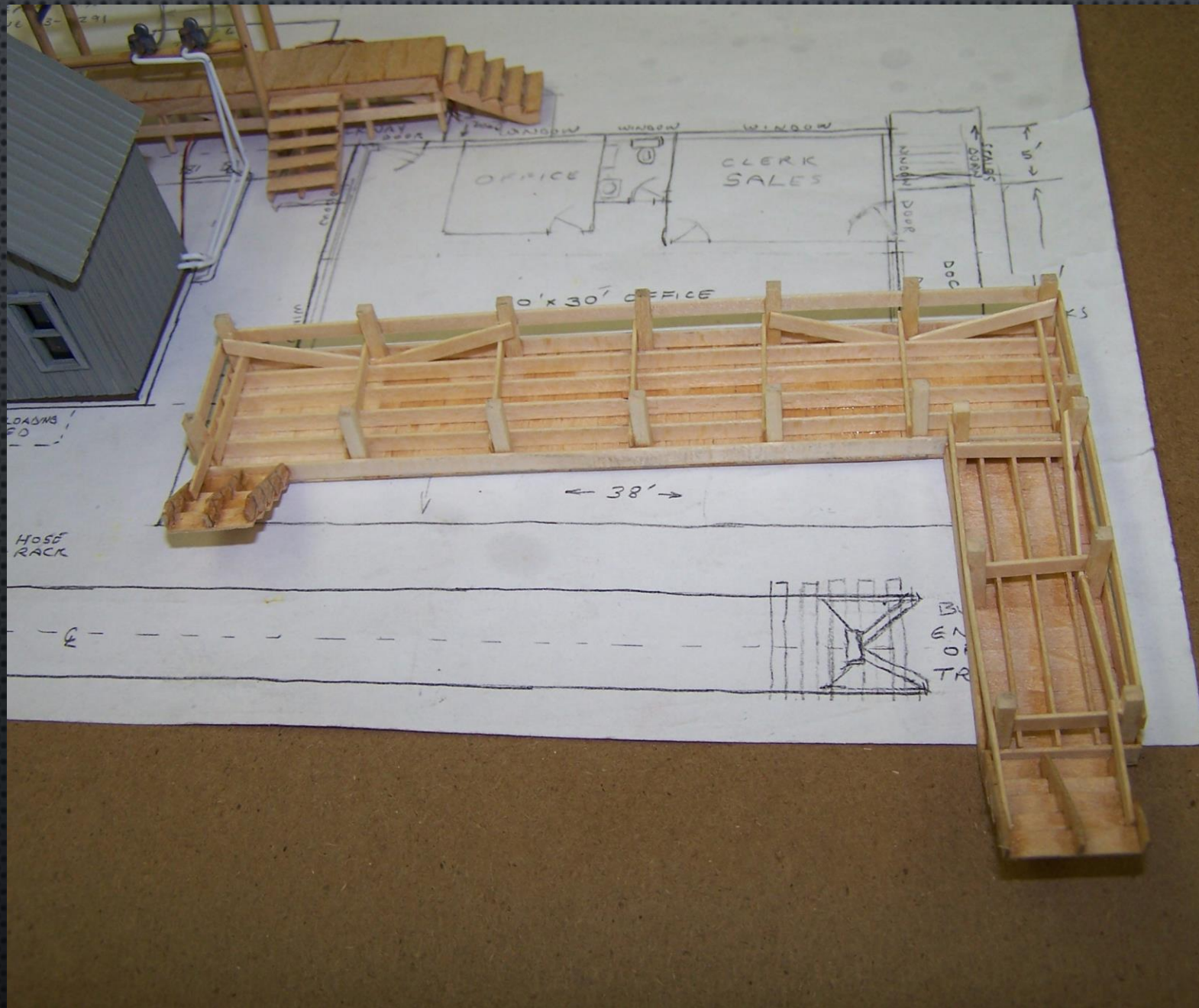
The ring sections had slight imperfections that simulated welded seams.



Additional bracing was added to the platforms before painting.

Diagonal braces and lower leg boards can be seen.

Handrails for the stairs were added later.



The loading platforms received staining.

A working platform was added across the tops of the tanks.

An access ladder with safety cage was added down one side.



THE MODELLING PROCESS

1. THE PROTOTYPE
2. SCALE DRAWINGS
3. CONSTRUCTION
- 4. INSTALLATION**
5. WEATHERING & FINAL DETAILS

A sand base will be made for the buildings and tanks.

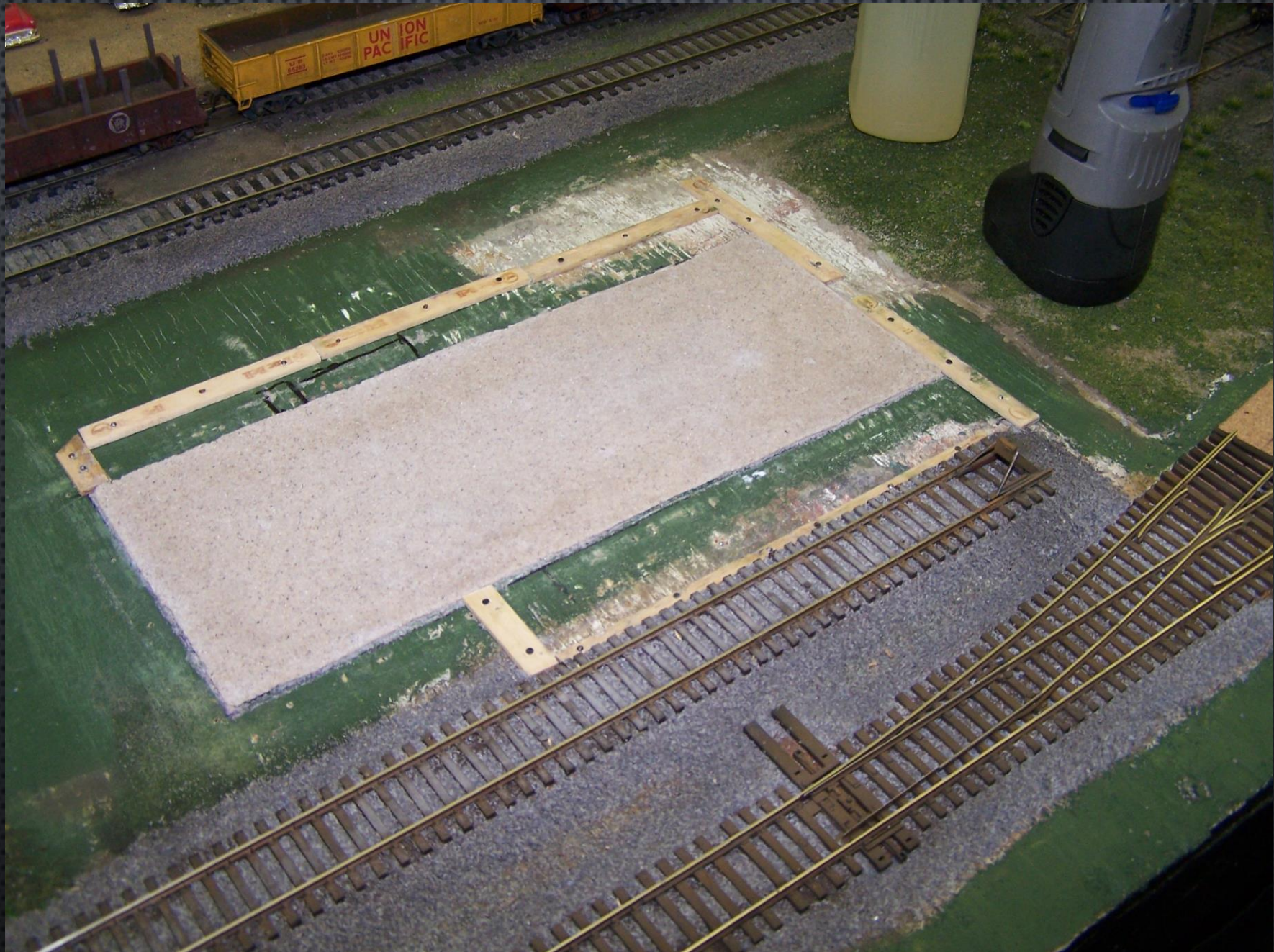
Wood sticks are used for forms.





Base for the buildings.

Additional base for the loading platforms has been formed from wood sticks.



Sand is added to make the transition to grade level.



Water and white glue mix is used to glue the sand base in place.

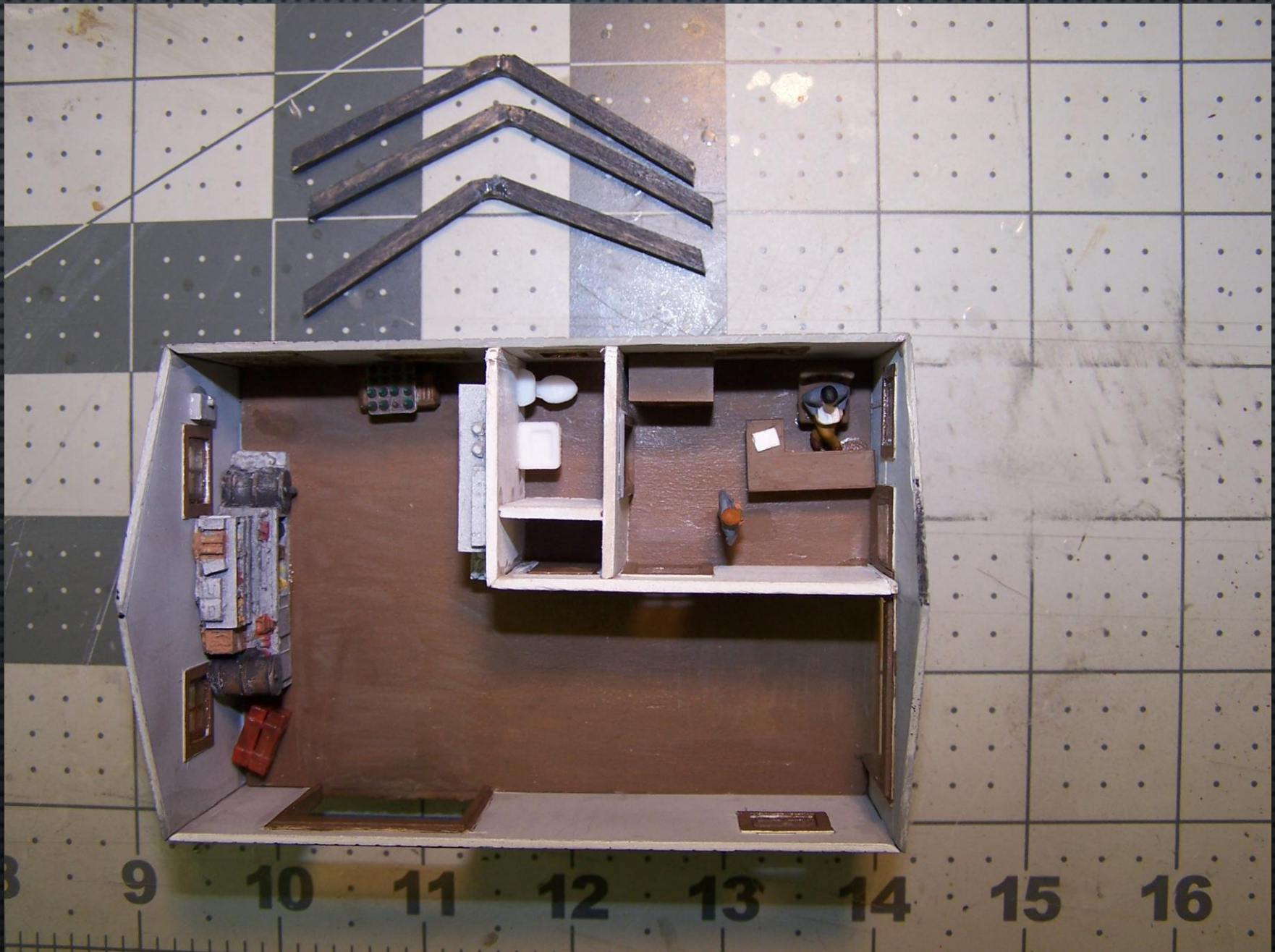
Wait 24 hours for the glue to harden.



THE MODELLING PROCESS

1. THE PROTOTYPE
2. SCALE DRAWINGS
3. CONSTRUCTION
4. INSTALLATION
- 5. WEATHERING & FINAL DETAILS**

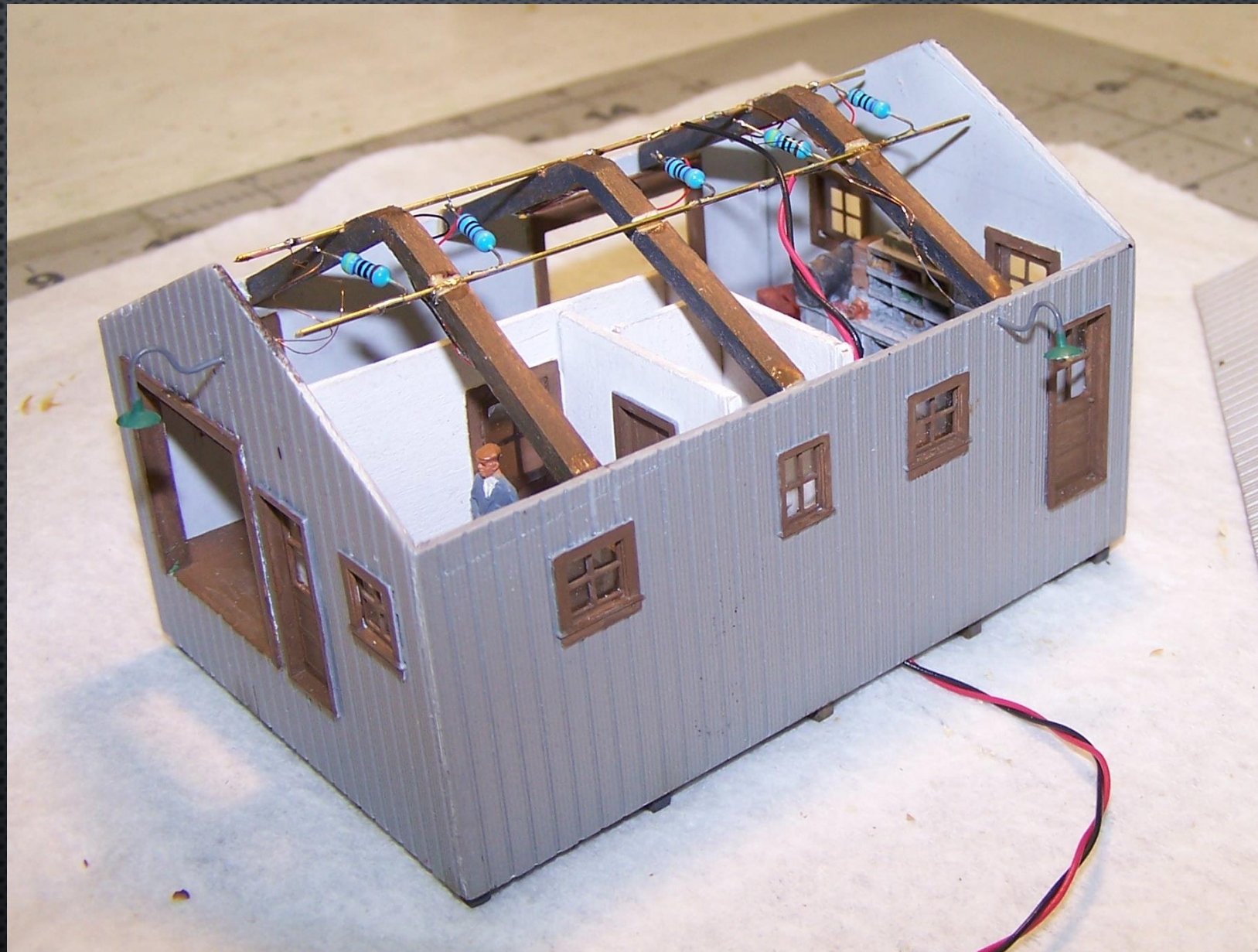
Interior details for the building were added before the roof was installed.



Three Interior 1mm LED lights was added from the ceiling.

Exterior door lights were added over the doors.

Two buss wires were added to power the LEDs.



Areas under the loading ramps were painted an earth color.



The buildings, piping, docks, tanks are weathered and glued in place.

LED wiring is connected to power under the table.



More sand is added to form a parking lot for delivery trucks and customers.



Grasses and weeds are added around the buildings.



More details:

Pipe valves

Fire
extinguisher

Tank car
hose

Pump house
attic vent

Freight door
frame



THE END